

Amphiphysin II Polyclonal Antibody

Catalog_no :	AT5352
Applications :	WB,IHC-p,ELISA
Reactivity :	Human,Mouse,Rat
Category :	抗原抗体
Size :	100µg/50µg/20µg
Gene_name :	BIN1
Protein_name :	Myc box-dependent-interacting protein 1
Humangene_id :	274
Humanswissprot_no :	O00499
Mousegene_id :	30948
Mouseswissprot_no :	O08539
Ratgene_id :	117028
Ratswissprot_no :	O08839
Immunogen :	The antiserum was produced against synthesized peptide derived from the C-terminal region of human BIN1. AA range:521-570
Specificity :	Amphiphysin II Polyclonal Antibody detects endogenous levels of Amphiphysin II protein.
Formulation :	Liquid in PBS containing 50% glycerol, 0.5% BSA and 0.02% sodium azide.
Source :	Rabbit
Dilution :	Western Blot: 1/500 - 1/2000. IHC-p: 1/100-1/300. ELISA: 1/20000. Not yet tested in other applications.
Purification :	The antibody was affinity-purified from rabbit antiserum by affinity-chromatography using epitope-specific immunogen.
Concentration :	1 mg/ml
Storage_stability :	-20°C/1 year

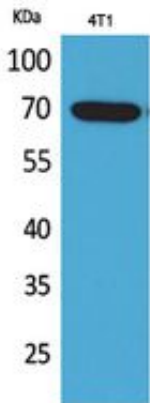


Msd : MSDS_Antibody.pdf

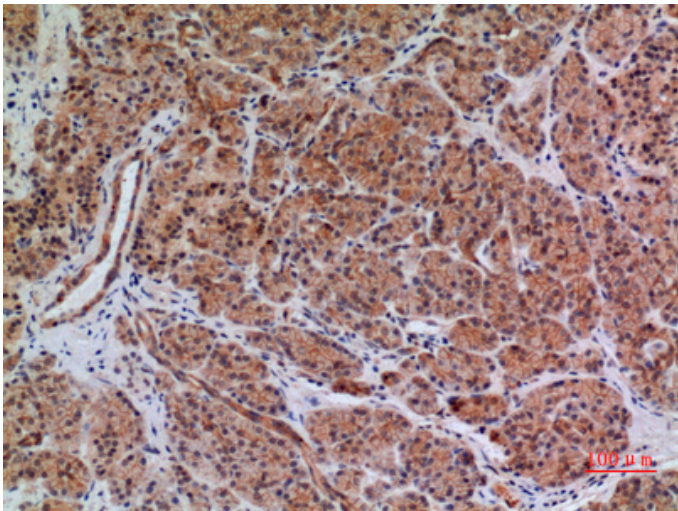
Other_name : BIN1; AMPHL; Myc box-dependent-interacting protein 1; Amphiphysin II; Amphiphysin-like protein; Box-dependent myc-interacting protein 1; Bridging integrator 1

Molecular Weight : 65KD

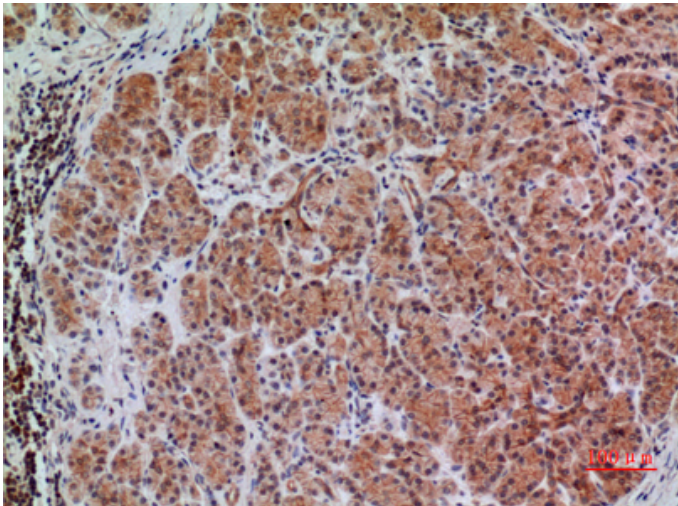
Product Images



Western Blot analysis of 4T1 cells using Amphiphysin II Polyclonal Antibody.. Secondary antibody was diluted at 1:20000

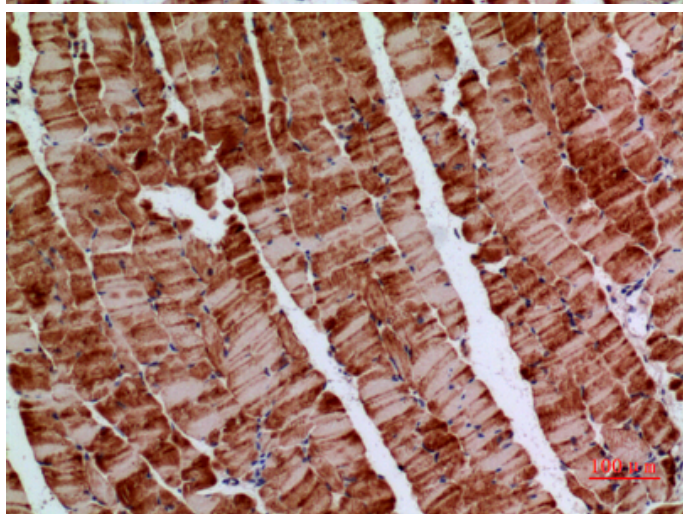
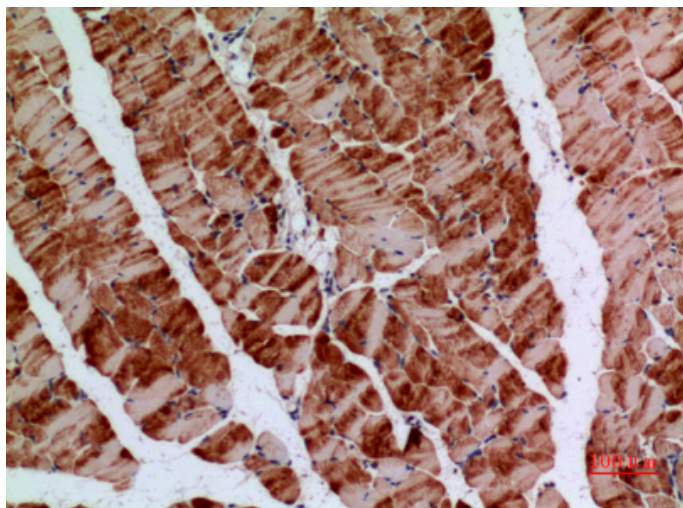


Immunohistochemical analysis of paraffin-embedded human-pancreas, antibody was diluted at 1:100



Immunohistochemical analysis of paraffin-embedded human-pancreas, antibody was diluted at 1:100

Immunohistochemical analysis of paraffin-embedded mouse-muscle, antibody was diluted at 1:100



Immunohistochemical analysis of paraffin-embedded mouse-muscle, antibody was diluted at 1:100