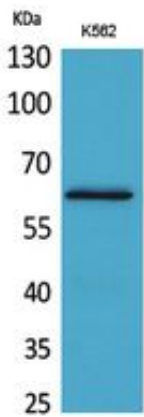


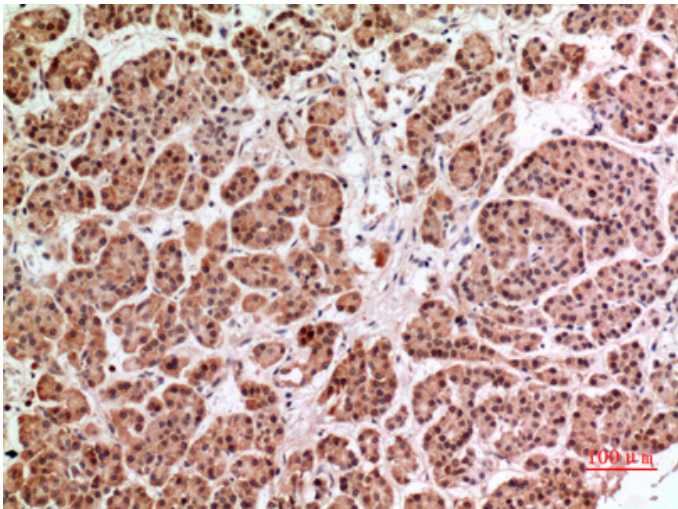
HPA1 Polyclonal Antibody

Catalog_no :	AT5353
Applications :	WB,IHC-p,ELISA
Reactivity :	Human
Category :	抗原抗体
Size :	100µg/50µg/20µg
Gene_name :	HPSE
Protein_name :	Heparanase
Humangene_id :	10855
Humanswissprot_no :	Q9Y251
Immunogen :	The antiserum was produced against synthesized peptide derived from the Internal region of human HPSE. AA range:241-290
Specificity :	HPA1 Polyclonal Antibody detects endogenous levels of HPA1 protein.
Formulation :	Liquid in PBS containing 50% glycerol, 0.5% BSA and 0.02% sodium azide.
Source :	Rabbit
Dilution :	Western Blot: 1/500 - 1/2000. IHC-p: 1/100-1/300. ELISA: 1/20000. Not yet tested in other applications.
Purification :	The antibody was affinity-purified from rabbit antiserum by affinity-chromatography using epitope-specific immunogen.
Concentration :	1 mg/ml
Storage_stability :	-20°C/1 year
Msds :	MSDS_Antibody.pdf
Other_name :	HPSE; HEP; HPA; HPA1; HPR1; HPSE1; HSE1; Heparanase; Endo-glucuronidase; Heparanase-1; Hpa1
Molecular Weight :	62KD

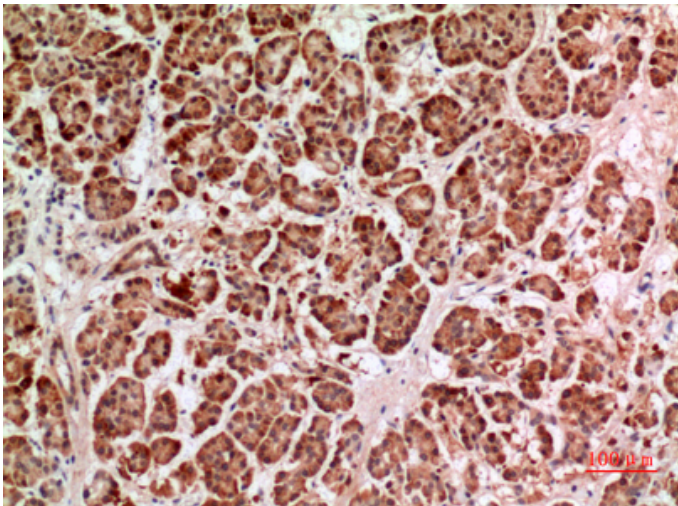
Product Images



Western Blot analysis of K562 cells using HPA1 Polyclonal Antibody.. Secondary antibody was diluted at 1:20000



Immunohistochemical analysis of paraffin-embedded human-pancreas, antibody was diluted at 1:100



Immunohistochemical analysis of paraffin-embedded human-pancreas, antibody was diluted at 1:100

Immunohistochemical analysis of paraffin-embedded human-pancreas, antibody was diluted at 1:100

