

ALDH2 Polyclonal Antibody

Catalog_no :	<u>AT5355</u>
Applications :	<u>WB,IHC-p,ELISA</u>
Reactivity :	<u>Human,Mouse,Rat</u>
Category :	<u>抗原抗体</u>
Size :	<u>100µg/50µg/20µg</u>
Gene_name :	<u>ALDH2</u>
Protein_name :	<u>Aldehyde dehydrogenase mitochondrial</u>
Humangene_id	<u>217</u>
:	<u></u>
Humanswissprot	<u>P05091</u>
_no :	<u></u>
Mousegene_id :	<u>11669</u>
Mouseswissprot	<u>P47738</u>
_no :	<u></u>
Ratgene_id :	<u>29539</u>
Ratswissprot_no	<u>P11884</u>
:	<u></u>
Immunogen :	<u>The antiserum was produced against synthesized peptide derived from the N-terminal region of human ALDH2. AA range:41-90</u>
Specificity :	<u>ALDH2 Polyclonal Antibody detects endogenous levels of ALDH2 protein.</u>
Formulation :	<u>Liquid in PBS containing 50% glycerol, 0.5% BSA and 0.02% sodium azide.</u>
Source :	<u>Rabbit</u>
Dilution :	<u>Western Blot: 1/500 - 1/2000. IHC-p: 1/100-1/300. ELISA: 1/20000. Not yet tested in other applications.</u>
Purification :	<u>The antibody was affinity-purified from rabbit antiserum by affinity-chromatography using epitope-specific immunogen.</u>
Concentration :	<u>1 mg/ml</u>
Storage_stability	<u>-20°C/1 year</u>
:	<u></u>
Msds :	<u>MSDS_Antibody.pdf</u>

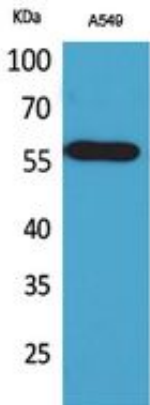


Other_name : ALDH2; ALDM; Aldehyde dehydrogenase, mitochondrial; ALDH class 2; ALDH-E2; ALDHI

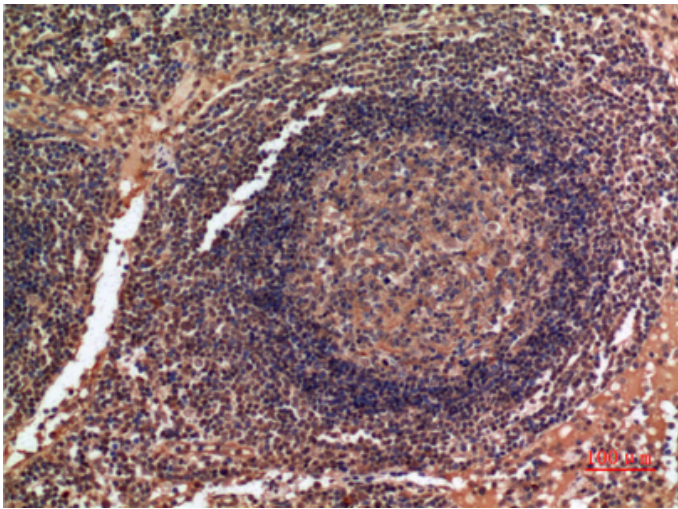
Molecular Weight : 56KD

Weight :

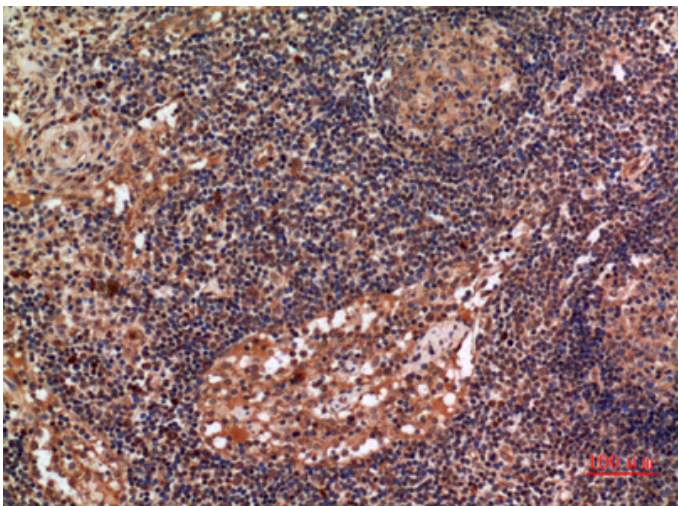
Product Images



Western Blot analysis of A549 cells using ALDH2 Polyclonal Antibody.. Secondary antibody was diluted at 1:20000



Immunohistochemical analysis of paraffin-embedded human-lymph-gland, antibody was diluted at 1:100



Immunohistochemical analysis of paraffin-embedded human-lymph-gland, antibody was diluted at 1:100

Immunohistochemical analysis of paraffin-embedded mouse-muscle, antibody was diluted at 1:100

