

RUNX2 Polyclonal Antibody

Catalog_no :	AT5356
Applications :	IF,WB,ELISA
Reactivity :	Human,Mouse,Rat
Category :	抗原抗体
Size :	100µg/50µg/20µg
Gene_name :	RUNX2
Protein_name :	Runt-related transcription factor 2
Humangene_id	860
:	
Humanswissprot	Q13950
_no :	
Mousegene_id :	12393
Mouseswissprot	Q08775
_no :	
Ratswissprot_no	Q9Z2J9
:	
Immunogen :	The antiserum was produced against synthesized peptide derived from the Internal region of human RUNX2. AA range:201-250
Specificity :	RUNX2 Polyclonal Antibody detects endogenous levels of RUNX2 protein.
Formulation :	Liquid in PBS containing 50% glycerol, 0.5% BSA and 0.02% sodium azide.
Source :	Rabbit
Dilution :	IF: 1:50-200 Western Blot: 1/500 - 1/2000. ELISA: 1/20000. Not yet tested in other applications.
Purification :	The antibody was affinity-purified from rabbit antiserum by affinity-chromatography using epitope-specific immunogen.
Concentration :	1 mg/ml
Storage_stability	-20°C/1 year
:	
Msds :	MSDS_Antibody.pdf
Other_name :	RUNX2; AML3; CBFA1; OSF2; PEBP2A; Runt-related transcription factor 2; Acute myeloid

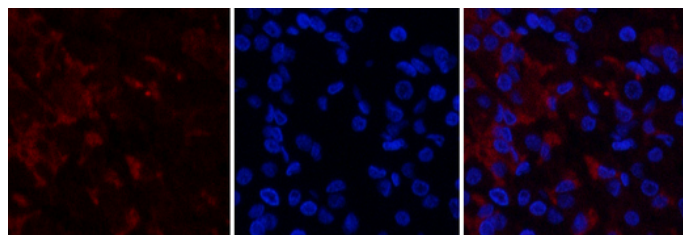


leukemia 3 protein; Core-binding factor subunit alpha-1; CBF-alpha-1; Oncogene AML-3Osteoblast-specific transcription factor 2; OSF-2; Polyomavirus enhancer-binding protein 2 alpha A subunit; PEA2-alpha A; PEBP2-alpha A; SL3-3 enhancer factor 1 alpha A subunit; SL3/AKV core-binding factor alpha A subunit

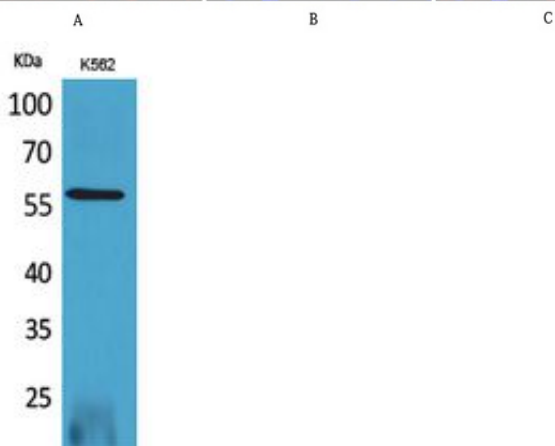
Molecular
Weight :

56KD

Product Images



Immunofluorescence analysis of human-stomach tissue. 1, RUNX2 Polyclonal Antibody (red) was diluted at 1:200 (4°C, overnight). 2, Cy3 labeled Secondary antibody was diluted at 1:300 (room temperature, 50 min). 3, Picture B: DAPI (blue) 10 min. Picture A: Target. Picture B: DAPI. Picture C: merge of A+B



Western Blot analysis of K562 cells using RUNX2 Polyclonal Antibody. Secondary antibody was diluted at 1:20000