

Autotaxin Polyclonal Antibody

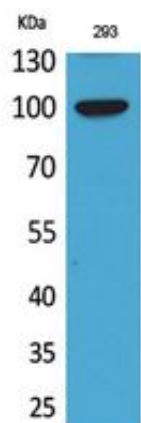
Catalog_no :	AT5359
Applications :	WB,ELISA
Reactivity :	Human,Mouse,Rat
Category :	抗原抗体
Size :	100µg/50µg/20µg
Gene_name :	ENPP2
Protein_name :	Ectonucleotide pyrophosphatase/phosphodiesterase family member 2
Humangene_id	5168
:	
Humanswissprot	Q13822
_no :	
Mousegene_id :	18606
Mouseswissprot	Q9R1E6
_no :	
Ratgene_id :	84050
Ratswissprot_no	Q64610
:	
Immunogen :	The antiserum was produced against synthesized peptide derived from the Internal region of human ENPP2. AA range:401-450
Specificity :	Autotaxin Polyclonal Antibody detects endogenous levels of Autotaxin protein.
Formulation :	Liquid in PBS containing 50% glycerol, 0.5% BSA and 0.02% sodium azide.
Source :	Rabbit
Dilution :	Western Blot: 1/500 - 1/2000. ELISA: 1/20000. Not yet tested in other applications.
Purification :	The antibody was affinity-purified from rabbit antiserum by affinity-chromatography using epitope-specific immunogen.
Concentration :	1 mg/ml
Storage_stability	-20°C/1 year
:	
Msds :	MSDS_Antibody.pdf



Other_name : ENPP2; ATX; PDNP2; Ectonucleotide pyrophosphatase/phosphodiesterase family member 2; E-NPP 2; Autotaxin; Extracellular lysophospholipase D; LysoPLD

Molecular Weight : 98KD

Product Images



Western Blot analysis of 293 cells using Autotaxin Polyclonal Antibody.. Secondary antibody was diluted at 1:20000