

## Troponin T-C Polyclonal Antibody

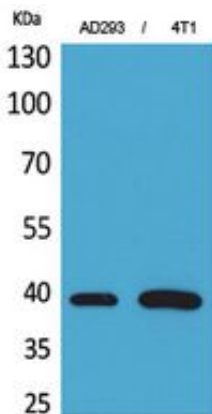
Catalog_no :	<u>AT5362</u>
Applications :	<u>WB,IHC-p,ELISA</u>
Reactivity :	<u>Human,Mouse,Rat</u>
Category :	<u>抗原抗体</u>
Size :	<u>100µg/50µg/20µg</u>
Gene_name :	<u>TNNT2</u>
Protein_name :	<u>Troponin T cardiac muscle</u>
Humangene_id :	<u><a href="#">7139</a></u>
Humanswissprot_no :	<u><a href="#">P45379</a></u>
Mousegene_id :	<u><a href="#">21956</a></u>
Mouseswissprot_no :	<u><a href="#">P50752</a></u>
Ratgene_id :	<u><a href="#">24837</a></u>
Ratswissprot_no :	<u><a href="#">P50753</a></u>
Immunogen :	<u>The antiserum was produced against synthesized peptide derived from the Internal region of human TNNT2. AA range:131-180</u>
Specificity :	<u>Troponin T-C Polyclonal Antibody detects endogenous levels of Troponin T-C protein.</u>
Formulation :	<u>Liquid in PBS containing 50% glycerol, 0.5% BSA and 0.02% sodium azide.</u>
Source :	<u>Rabbit</u>
Dilution :	<u>Western Blot: 1/500 - 1/2000. IHC-p: 1/100-1/300. ELISA: 1/20000. Not yet tested in other applications.</u>
Purification :	<u>The antibody was affinity-purified from rabbit antiserum by affinity-chromatography using epitope-specific immunogen.</u>
Concentration :	<u>1 mg/ml</u>
Storage_stability :	<u>-20°C/1 year</u>
Msds :	<u>MSDS_Antibody.pdf</u>



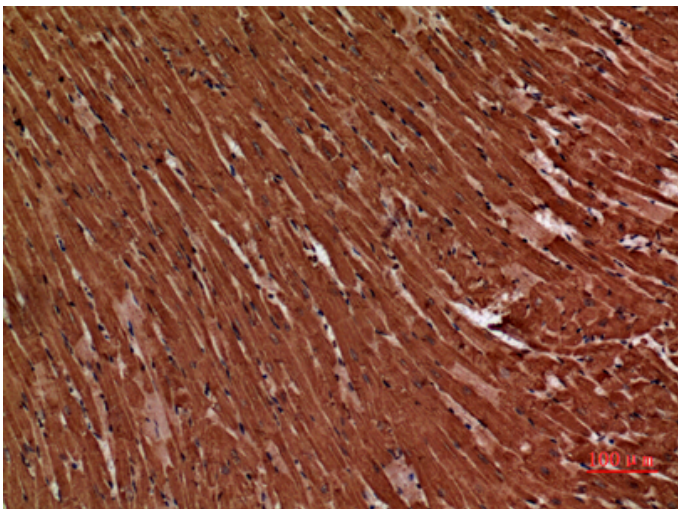
Other\_name : TNNT2; Troponin T, cardiac muscle; TnTc; Cardiac muscle troponin T; cTnT

Molecular Weight : 35KD

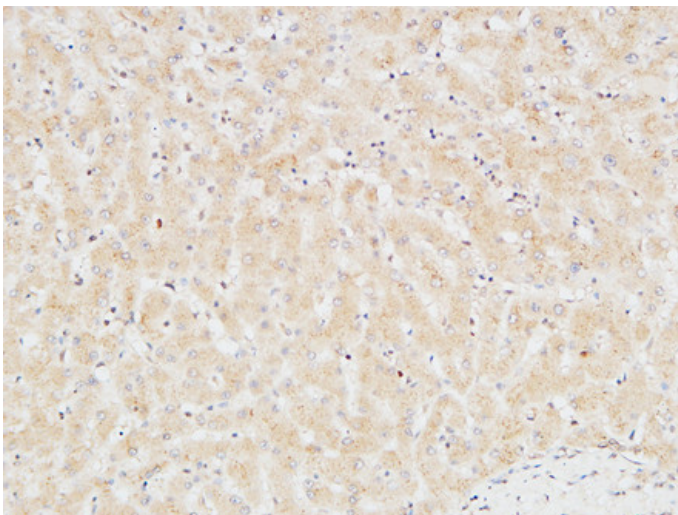
## Product Images



Western Blot analysis of AD293, 4T1 cells using Troponin T-C Polyclonal Antibody.. Secondary antibody was diluted at 1:20000

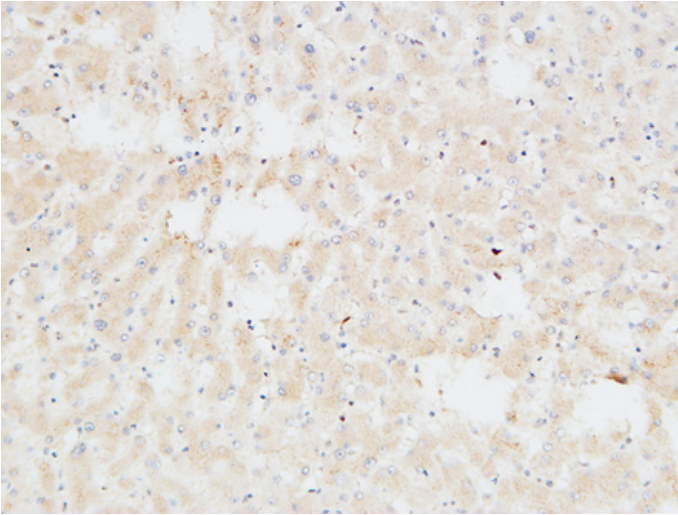


Immunohistochemical analysis of paraffin-embedded mouse-heart, antibody was diluted at 1:100

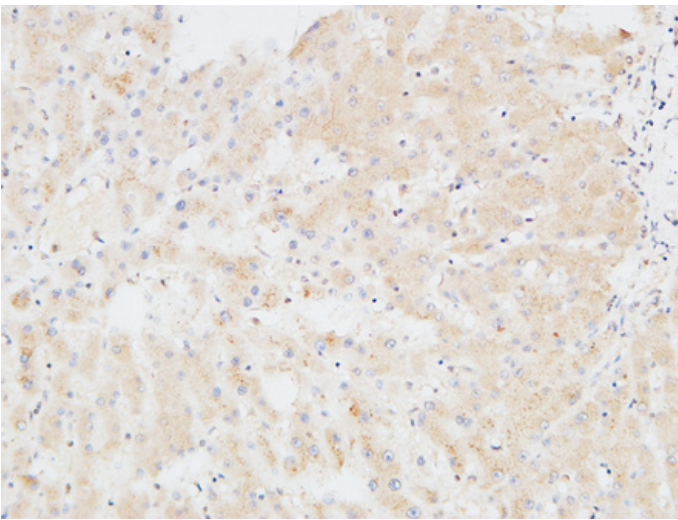


Immunohistochemical analysis of paraffin-embedded Human liver. 1, Antibody was diluted at 1:200(4°,overnight). 2, High-pressure and temperature EDTA, pH8.0 was used for antigen retrieval. 3,Secondary antibody was diluted at 1:200(room temperature, 30min).

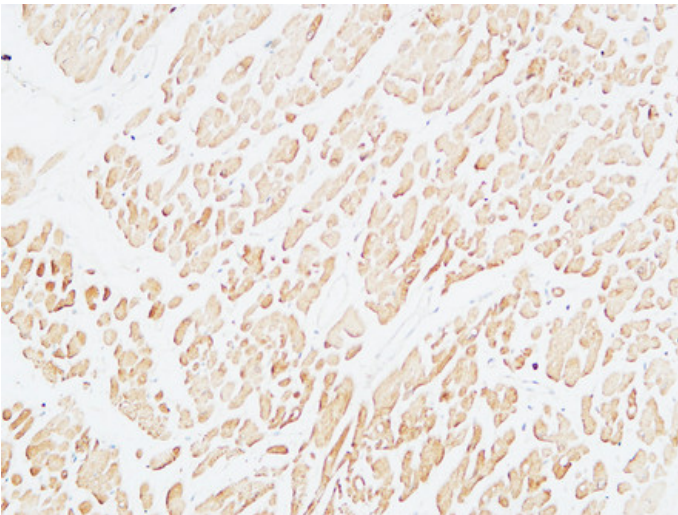
Immunohistochemical analysis of paraffin-embedded Human liver. 1, Antibody was diluted at 1:200(4°,overnight). 2, High-pressure and temperature EDTA, pH8.0 was used for antigen retrieval. 3,Secondary antibody was diluted at 1:200(room temperature, 30min).



Immunohistochemical analysis of paraffin-embedded Human liver. 1, Antibody was diluted at 1:200(4°,overnight). 2, High-pressure and temperature EDTA, pH8.0 was used for antigen retrieval. 3,Secondary antibody was diluted at 1:200(room temperature, 30min).

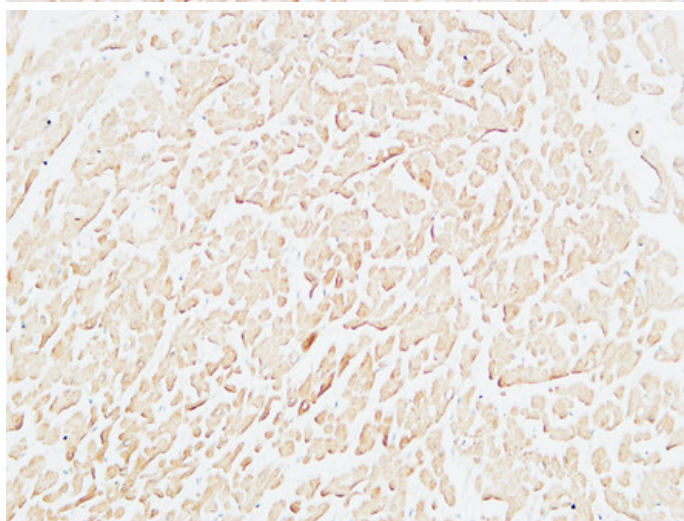
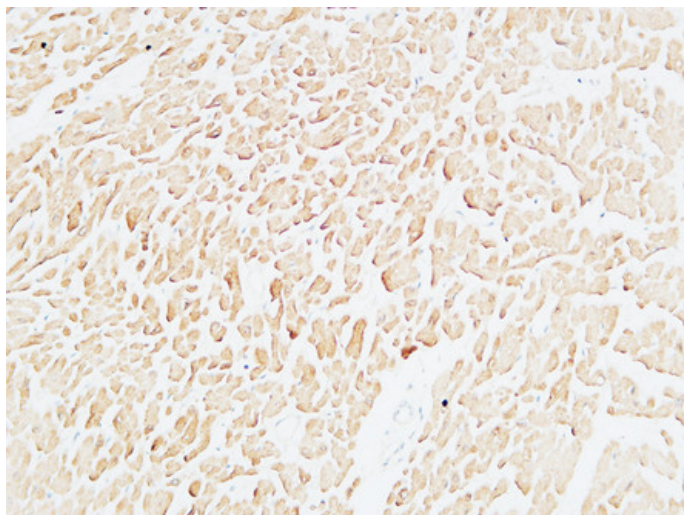


Immunohistochemical analysis of paraffin-embedded Human heart. 1, Antibody was diluted at 1:200(4°,overnight). 2, High-pressure and temperature EDTA, pH8.0 was used for antigen retrieval. 3,Secondary antibody was diluted at 1:200(room temperature, 30min).



Immunohistochemical analysis of paraffin-embedded Human heart. 1, Antibody was diluted at 1:200(4°,overnight). 2, High-pressure and temperature EDTA, pH8.0 was used for antigen retrieval. 3,Secondary antibody was diluted at 1:200(room temperature, 30min).





Immunohistochemical analysis of paraffin-embedded Human heart. 1, Antibody was diluted at 1:200(4°,overnight). 2, High-pressure and temperature EDTA, pH8.0 was used for antigen retrieval. 3,Secondary antibody was diluted at 1:200(room temperature, 30min).