



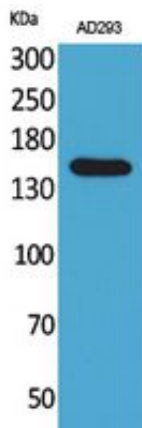
NTE Polyclonal Antibody

Catalog_no :	AT5363
Applications :	WB,IHC-p,ELISA
Reactivity :	Human,Mouse,Rat
Category :	抗原抗体
Size :	100µg/50µg/20µg
Gene_name :	PNPLA6
Protein_name :	Neuropathy target esterase
Humangene_id :	10908
Humanswissprot_no :	Q8IY17
Mousegene_id :	50767
Mouseswissprot_no :	Q3TRM4
Immunogen :	The antiserum was produced against synthesized peptide derived from the Internal region of human PNPLA6. AA range:1031-1080
Specificity :	NTE Polyclonal Antibody detects endogenous levels of NTE protein.
Formulation :	Liquid in PBS containing 50% glycerol, 0.5% BSA and 0.02% sodium azide.
Source :	Rabbit
Dilution :	Western Blot: 1/500 - 1/2000. IHC-p: 1/100-1/300. ELISA: 1/20000. Not yet tested in other applications.
Purification :	The antibody was affinity-purified from rabbit antiserum by affinity-chromatography using epitope-specific immunogen.
Concentration :	1 mg/ml
Storage_stability :	-20°C/1 year
Msds :	MSDS_Antibody.pdf
Other_name :	PNPLA6; NTE; Neuropathy target esterase; Patatin-like phospholipase domain-containing protein 6
Molecular	150KD

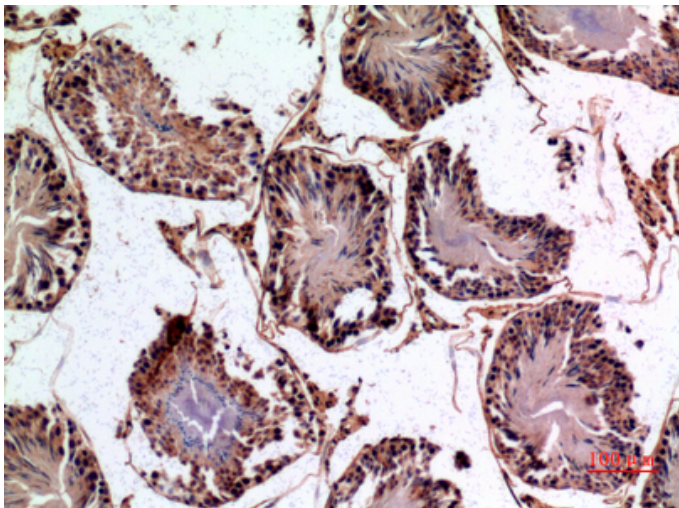
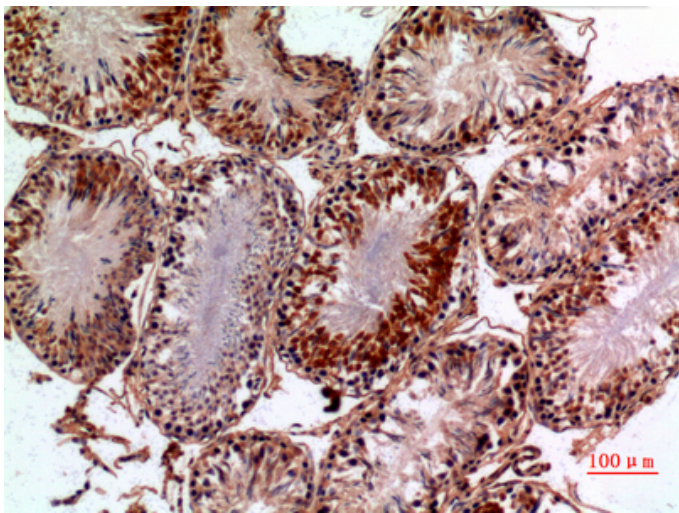


Weight :

Product Images



Western Blot analysis of AD293 cells using NTE Polyclonal Antibody.. Secondary antibody was diluted at 1:20000



Immunohistochemical analysis of paraffin-embedded rat-testis, antibody was diluted at 1:100

Immunohistochemical analysis of paraffin-embedded rat-testis, antibody was diluted at 1:100

