



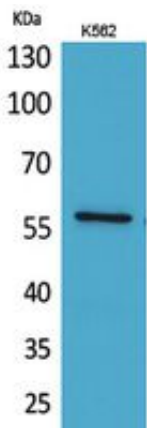
Angptl1 Polyclonal Antibody

| | |
|-------------------|---|
| Catalog_no : | AT5364 |
| Applications : | WB,IHC-p,ELISA |
| Reactivity : | Human,Mouse,Rat |
| Category : | 抗原抗体 |
| Size : | 100µg/50µg/20µg |
| Gene_name : | ANGPTL1 |
| Protein_name : | Angiopoietin-related protein 1 |
| Humangene_id | 9068 |
| : | |
| Humanswissprot | O95841 |
| _no : | |
| Mousegene_id : | 72713 |
| Mouseswissprot | Q640P2 |
| _no : | |
| Immunogen : | The antiserum was produced against synthesized peptide derived from the Internal region of human ANGPTL1. AA range:11-60 |
| Specificity : | Angptl1 Polyclonal Antibody detects endogenous levels of Angptl1 protein. |
| Formulation : | Liquid in PBS containing 50% glycerol, 0.5% BSA and 0.02% sodium azide. |
| Source : | Rabbit |
| Dilution : | Western Blot: 1/500 - 1/2000. IHC-p: 1/100-1/300. ELISA: 1/20000. Not yet tested in other applications. |
| Purification : | The antibody was affinity-purified from rabbit antiserum by affinity-chromatography using epitope-specific immunogen. |
| Concentration : | 1 mg/ml |
| Storage_stability | -20°C/1 year |
| : | |
| Msds : | MSDS_Antibody.pdf |
| Other_name : | ANGPTL1; ANG3; ANGPT3; ARP1; PSEC0154; Angiopoietin-related protein 1; Angiopoietin-3; ANG-3; Angiopoietin-like protein 1 |
| Molecular | 57KD |

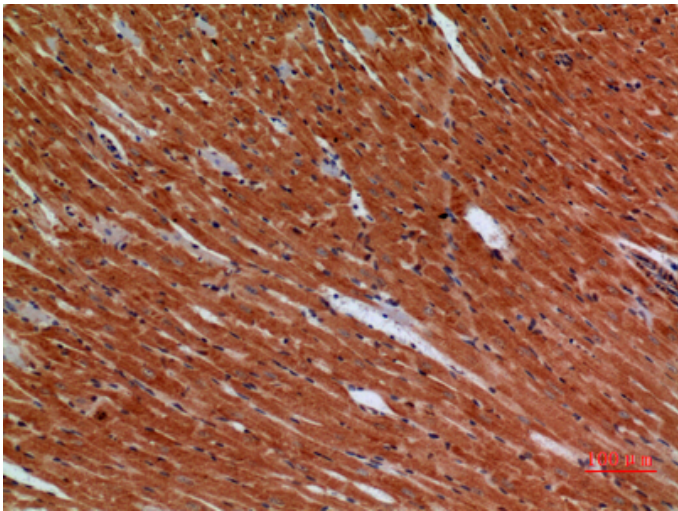


Weight :

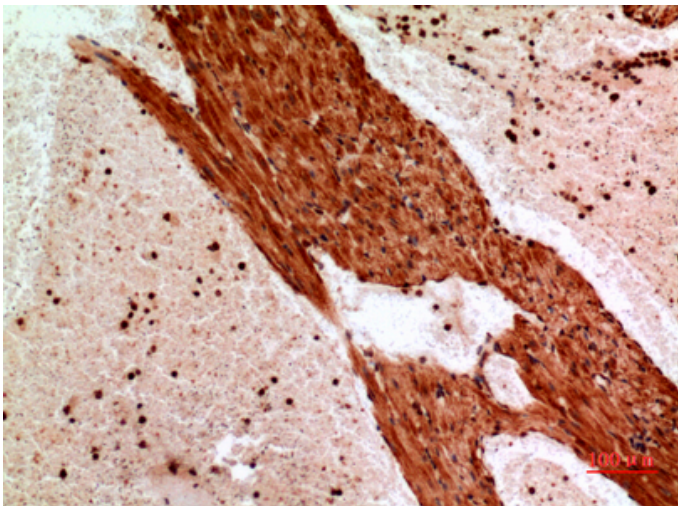
Product Images



Western Blot analysis of K562 cells using Angptl1 Polyclonal Antibody.. Secondary antibody was diluted at 1:20000



Immunohistochemical analysis of paraffin-embedded mouse-heart, antibody was diluted at 1:100



Immunohistochemical analysis of paraffin-embedded mouse-heart, antibody was diluted at 1:100