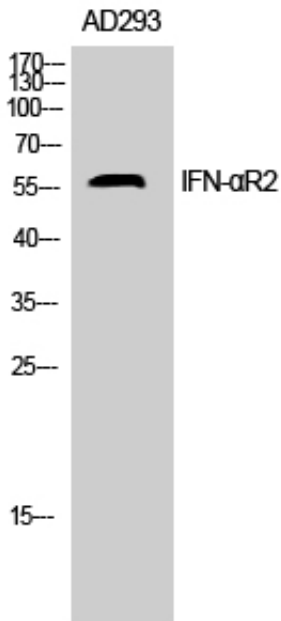


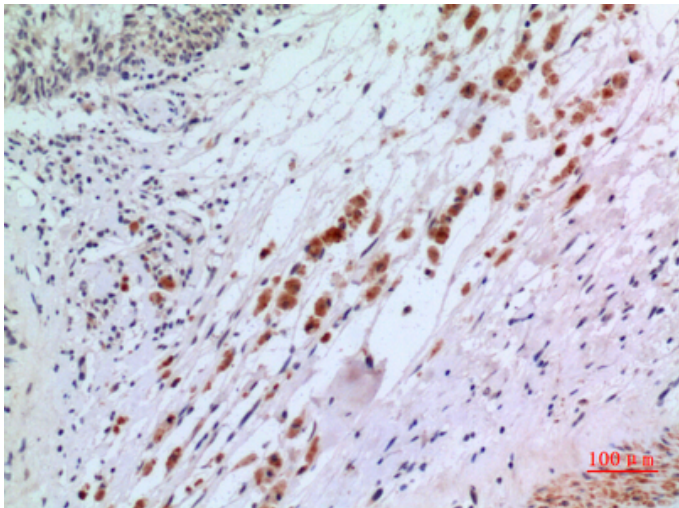
IFN- $\alpha$ R2 Polyclonal Antibody

Catalog_no :	AT5367
Applications :	WB,IHC-p,ELISA
Reactivity :	Human
Category :	抗原抗体
Size :	100 $\mu$ g/50 $\mu$ g/20 $\mu$ g
Gene_name :	IFNAR2
Protein_name :	Interferon alpha/beta receptor 2
Humangene_id :	<a href="#">3455</a>
Humanswissprot_no :	<a href="#">P48551</a>
Immunogen :	The antiserum was produced against synthesized peptide derived from the N-terminal region of human IFNAR2. AA range:41-90
Specificity :	IFN- $\alpha$ R2 Polyclonal Antibody detects endogenous levels of IFN- $\alpha$ R2 protein.
Formulation :	Liquid in PBS containing 50% glycerol, 0.5% BSA and 0.02% sodium azide.
Source :	Rabbit
Dilution :	Western Blot: 1/500 - 1/2000. IHC-p: 1/100-1/300. ELISA: 1/20000. Not yet tested in other applications.
Purification :	The antibody was affinity-purified from rabbit antiserum by affinity-chromatography using epitope-specific immunogen.
Concentration :	1 mg/ml
Storage_stability :	-20°C/1 year
Msds :	MSDS_Antibody.pdf
Other_name :	IFNAR2; IFNABR; IFNARB; Interferon alpha/beta receptor 2; IFN-R-2; IFN-alpha binding protein; IFN-alpha/beta receptor 2; Interferon alpha binding protein; Type I interferon receptor 2
Molecular Weight :	57KD

## Product Images



Western Blot analysis of AD293 cells using IFN-αR2 Polyclonal Antibody.. Secondary antibody was diluted at 1:20000



Immunohistochemical analysis of paraffin-embedded human-brain, antibody was diluted at 1:100