



SCYL1BP1 Polyclonal Antibody

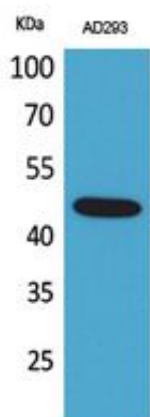
Catalog_no :	AT5369
Applications :	WB,ELISA
Reactivity :	Human,Mouse,Rat
Category :	抗原抗体
Size :	100µg/50µg/20µg
Gene_name :	GORAB
Protein_name :	RAB6-interacting golgin
Humangene_id :	92344
Humanswissprot_no :	Q5T7V8
Mousegene_id :	98376
Mouseswissprot_no :	Q8BRM2
Ratgene_id :	304923
Ratswissprot_no :	B1H222
Immunogen :	The antiserum was produced against synthesized peptide derived from the N-terminal region of human GORAB. AA range:1-50
Specificity :	SCYL1BP1 Polyclonal Antibody detects endogenous levels of SCYL1BP1 protein.
Formulation :	Liquid in PBS containing 50% glycerol, 0.5% BSA and 0.02% sodium azide.
Source :	Rabbit
Dilution :	Western Blot: 1/500 - 1/2000. ELISA: 1/20000. Not yet tested in other applications.
Purification :	The antibody was affinity-purified from rabbit antiserum by affinity-chromatography using epitope-specific immunogen.
Concentration :	1 mg/ml
Storage_stability :	-20°C/1 year
Msds :	MSDS_Antibody.pdf



Other_name : GORAB; NTKLBP1; SCYL1BP1; RAB6-interacting golgin; N-terminal kinase-like-binding protein 1; NTKL-BP1; NTKL-binding protein 1; hNTKL-BP1; SCY1-like 1-binding protein 1; SCYL1-BP1; SCYL1-binding protein 1

Molecular Weight : 45KD

Product Images



Western Blot analysis of AD293 cells using SCYL1BP1 Polyclonal Antibody.. Secondary antibody was diluted at 1:20000