

L-Selectin Polyclonal Antibody

Catalog_no :	AT5370
Applications :	WB,ELISA
Reactivity :	Human,Mouse,Rat
Category :	抗原抗体
Size :	100µg/50µg/20µg
Gene_name :	SELL
Protein_name :	L-selectin
Humangene_id :	6402
Humanswissprot_no :	P14151
Mousegene_id :	20343
Mouseswissprot_no :	P18337
Ratswissprot_no :	P30836
Immunogen :	The antiserum was produced against synthesized peptide derived from the Internal region of human SELL. AA range:91-140
Specificity :	L-Selectin Polyclonal Antibody detects endogenous levels of L-Selectin protein.
Formulation :	Liquid in PBS containing 50% glycerol, 0.5% BSA and 0.02% sodium azide.
Source :	Rabbit
Dilution :	Western Blot: 1/500 - 1/2000. ELISA: 1/20000. Not yet tested in other applications.
Purification :	The antibody was affinity-purified from rabbit antiserum by affinity-chromatography using epitope-specific immunogen.
Concentration :	1 mg/ml
Storage_stability :	-20°C/1 year
Msds :	MSDS_Antibody.pdf
Other_name :	SELL; LNHR; LYAM1; L-selectin; CD62 antigen-like family member L; Leukocyte adhesion molecule 1; LAM-1; Leukocyte surface antigen Leu-8; Leukocyte-endothelial cell

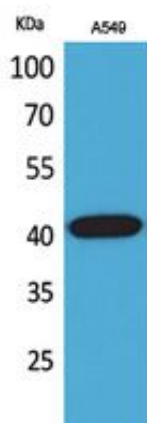


adhesion molecule 1; LECAM1; Lymph node homing receptor; TQ1; gp90-MEL; CD62L

Molecular
Weight :

42KD

Product Images



Western Blot analysis of A549 cells using L-Selectin Polyclonal Antibody.. Secondary antibody was diluted at 1:20000