

Annexin VII Polyclonal Antibody

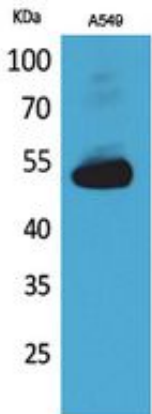
Catalog_no :	AT5373
Applications :	WB,IHC-p,ELISA
Reactivity :	Human,Mouse
Category :	抗原抗体
Size :	100µg/50µg/20µg
Gene_name :	ANXA7
Protein_name :	Annexin A7
Humangene_id :	310
Humanswissprot_no :	P20073
Mousegene_id :	11750
Mouseswissprot_no :	Q07076
Immunogen :	The antiserum was produced against synthesized peptide derived from the Internal region of human ANXA7. AA range:271-320
Specificity :	Annexin VII Polyclonal Antibody detects endogenous levels of Annexin VII protein.
Formulation :	Liquid in PBS containing 50% glycerol, 0.5% BSA and 0.02% sodium azide.
Source :	Rabbit
Dilution :	Western Blot: 1/500 - 1/2000. IHC-p: 1/100-1/300. ELISA: 1/20000. Not yet tested in other applications.
Purification :	The antibody was affinity-purified from rabbit antiserum by affinity-chromatography using epitope-specific immunogen.
Concentration :	1 mg/ml
Storage_stability :	-20°C/1 year
Msds :	MSDS_Antibody.pdf
Other_name :	ANXA7; ANX7; SNX; OK/SW-cl.95; Annexin A7; Annexin VII; Annexin-7; Synexin
Molecular Weight :	53KD



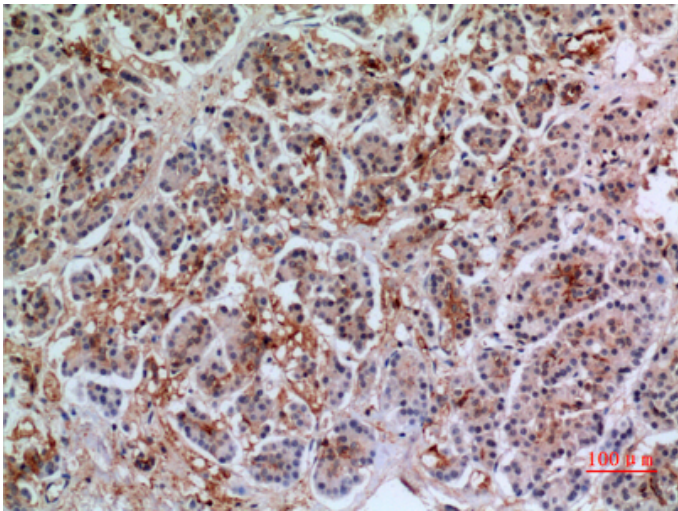
专注二抗产品

Biodragon旗下品牌

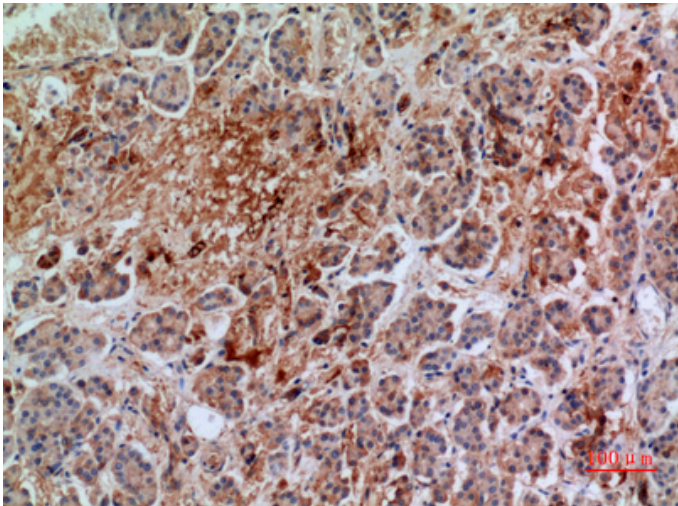
Product Images



Western Blot analysis of A549 cells using Annexin VII Polyclonal Antibody.. Secondary antibody was diluted at 1:20000



Immunohistochemical analysis of paraffin-embedded human-pancreas, antibody was diluted at 1:100



Immunohistochemical analysis of paraffin-embedded human-pancreas, antibody was diluted at 1:100

Immunohistochemical analysis of paraffin-embedded human-pancreas, antibody was diluted at 1:100

