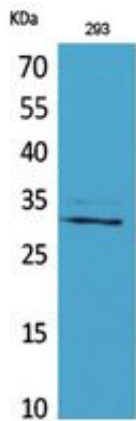




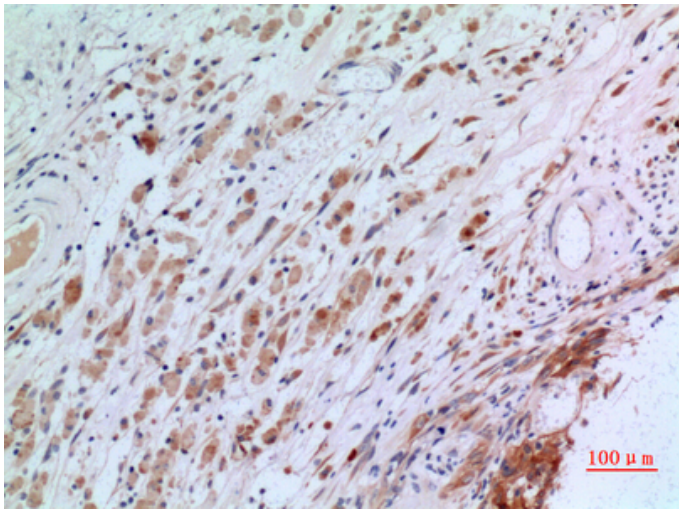
CGREF1 Polyclonal Antibody

Catalog_no :	AT5376
Applications :	WB,IHC-p,ELISA
Reactivity :	Human
Category :	抗原抗体
Size :	100µg/50µg/20µg
Gene_name :	CGREF1
Protein_name :	Cell growth regulator with EF hand domain protein 1
Humangene_id :	10669
Humanswissprot_no :	Q99674
Immunogen :	The antiserum was produced against synthesized peptide derived from the N-terminal region of human CGREF1. AA range:1-50
Specificity :	CGREF1 Polyclonal Antibody detects endogenous levels of CGREF1 protein.
Formulation :	Liquid in PBS containing 50% glycerol, 0.5% BSA and 0.02% sodium azide.
Source :	Rabbit
Dilution :	Western Blot: 1/500 - 1/2000. IHC-p: 1/100-1/300. ELISA: 1/20000. Not yet tested in other applications.
Purification :	The antibody was affinity-purified from rabbit antiserum by affinity-chromatography using epitope-specific immunogen.
Concentration :	1 mg/ml
Storage_stability :	-20°C/1 year
Msds :	MSDS_Antibody.pdf
Other_name :	CGREF1; CGR11; Cell growth regulator with EF hand domain protein 1; Cell growth regulatory gene 11 protein; Hydrophobestin
Molecular Weight :	32KD

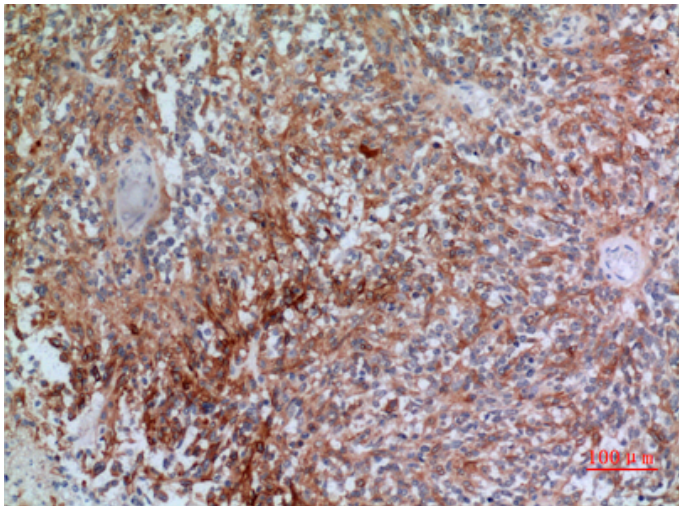
Product Images



Western Blot analysis of 293 cells using CGREF1 Polyclonal Antibody.. Secondary antibody was diluted at 1:20000



Immunohistochemical analysis of paraffin-embedded human-brain, antibody was diluted at 1:100



Immunohistochemical analysis of paraffin-embedded human-brain, antibody was diluted at 1:100