

Apaf-1 Polyclonal Antibody

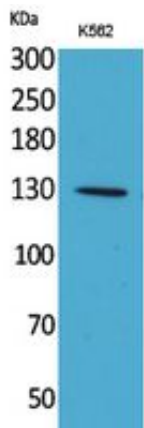
Catalog_no :	AT5378
Applications :	WB,IHC-p,ELISA
Reactivity :	Human,Mouse,Rat
Category :	抗原抗体
Size :	100µg/50µg/20µg
Gene_name :	APAF1
Protein_name :	Apoptotic protease-activating factor 1
Humangene_id :	317
Humanswissprot_no :	O14727
Mousegene_id :	11783
Mouseswissprot_no :	O88879
Ratgene_id :	78963
Ratswissprot_no :	Q9EPV5
Immunogen :	The antiserum was produced against synthesized peptide derived from the Internal region of human APAF1. AA range:501-550
Specificity :	Apaf-1 Polyclonal Antibody detects endogenous levels of Apaf-1 protein.
Formulation :	Liquid in PBS containing 50% glycerol, 0.5% BSA and 0.02% sodium azide.
Source :	Rabbit
Dilution :	Western Blot: 1/500 - 1/2000. IHC-p: 1/100-1/300. ELISA: 1/20000. Not yet tested in other applications.
Purification :	The antibody was affinity-purified from rabbit antiserum by affinity-chromatography using epitope-specific immunogen.
Concentration :	1 mg/ml
Storage_stability :	-20°C/1 year
Msds :	MSDS_Antibody.pdf



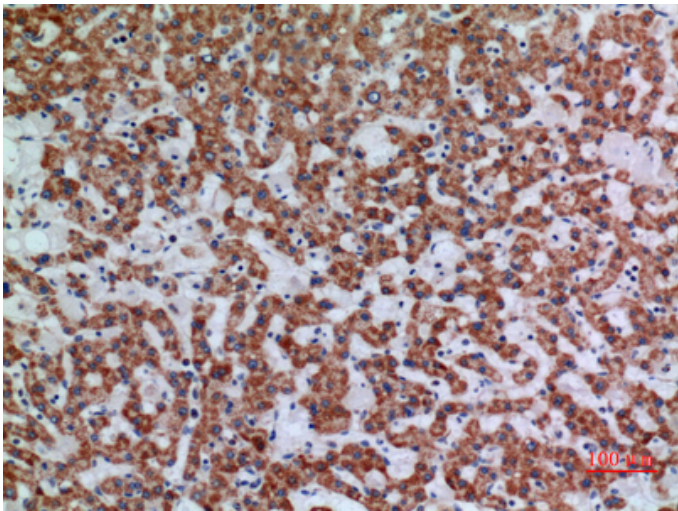
Other_name : APAF1; KIAA0413; Apoptotic protease-activating factor 1; APAF-1

Molecular Weight : 135KD

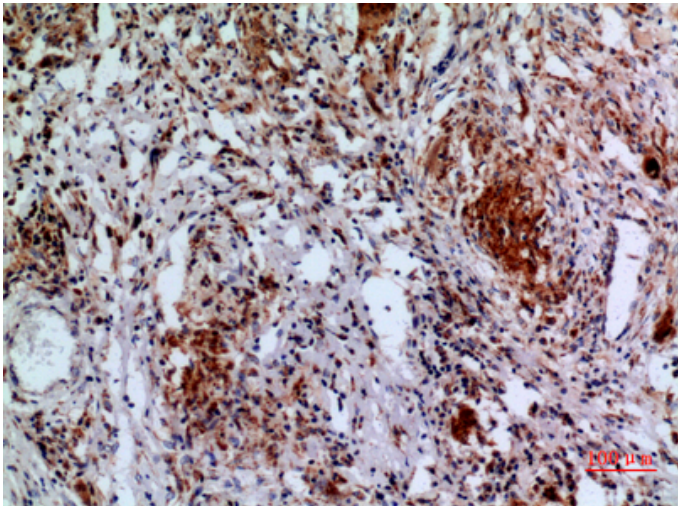
Product Images



Western Blot analysis of K562 cells using Apaf-1 Polyclonal Antibody.. Secondary antibody was diluted at 1:20000



Immunohistochemical analysis of paraffin-embedded human-liver, antibody was diluted at 1:100



Immunohistochemical analysis of paraffin-embedded human-lung, antibody was diluted at 1:100