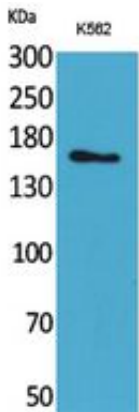




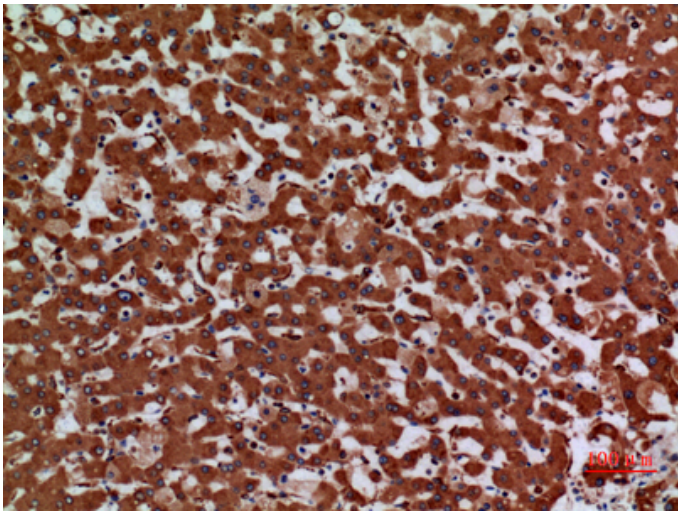
Laminin γ -2 Polyclonal Antibody

Catalog_no :	AT5379
Applications :	WB,IHC-p,ELISA
Reactivity :	Human,Rat
Category :	抗原抗体
Size :	100 μ g/50 μ g/20 μ g
Gene_name :	LAMC2
Protein_name :	Laminin subunit gamma-2
Humangene_id :	3918
Humanswissprot_no :	Q13753
Immunogen :	The antiserum was produced against synthesized peptide derived from the C-terminal region of human LAMC2. AA range:1021-1070
Specificity :	Laminin γ -2 Polyclonal Antibody detects endogenous levels of Laminin γ -2 protein.
Formulation :	Liquid in PBS containing 50% glycerol, 0.5% BSA and 0.02% sodium azide.
Source :	Rabbit
Dilution :	Western Blot: 1/500 - 1/2000. IHC-p: 1/100-1/300. ELISA: 1/20000. Not yet tested in other applications.
Purification :	The antibody was affinity-purified from rabbit antiserum by affinity-chromatography using epitope-specific immunogen.
Concentration :	1 mg/ml
Storage_stability :	-20°C/1 year
Msds :	MSDS_Antibody.pdf
Other_name :	LAMC2; LAMB2T; LAMNB2; Laminin subunit gamma-2; Cell-scattering factor 140 kDa subunit; CSF 140 kDa subunit; Epiligrin subunit gamma; Kalinin subunit gamma; Kalinin/nicein/epiligrin 100 kDa subunit;Ladsin 140 kDa subunit; Laminin B2t chain; Laminin-5 subunit gamma; Large adhesive scatter factor 140 kDa subunit; Nicein subunit gamma
Molecular Weight :	135KD

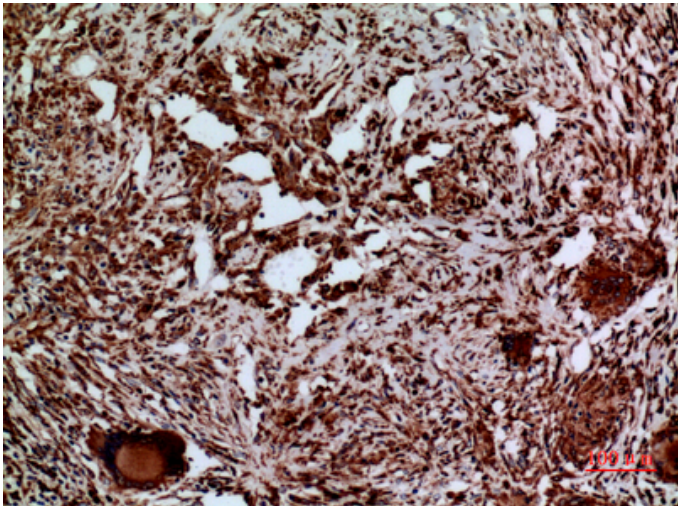
Product Images



Western Blot analysis of K562 cells using Laminin γ -2 Polyclonal Antibody.. Secondary antibody was diluted at 1:20000



Immunohistochemical analysis of paraffin-embedded human-liver, antibody was diluted at 1:100



Immunohistochemical analysis of paraffin-embedded human-lung, antibody was diluted at 1:100

Immunohistochemical analysis of paraffin-embedded human-lung, antibody was diluted at 1:100

