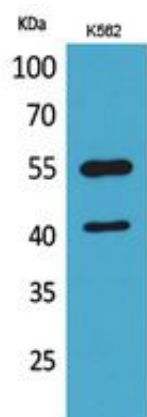




IL-2Ry Polyclonal Antibody

Catalog_no :	AT5380
Applications :	WB,ELISA
Reactivity :	Human
Category :	抗原抗体
Size :	100µg/50µg/20µg
Gene_name :	IL2RG
Protein_name :	Cytokine receptor common subunit gamma
Humangene_id :	3561
Humanswissprot_no :	P31785
Immunogen :	The antiserum was produced against synthesized peptide derived from the Internal region of human IL2RG. AA range:101-150
Specificity :	IL-2Ry Polyclonal Antibody detects endogenous levels of IL-2Ry protein.
Formulation :	Liquid in PBS containing 50% glycerol, 0.5% BSA and 0.02% sodium azide.
Source :	Rabbit
Dilution :	Western Blot: 1/500 - 1/2000. ELISA: 1/20000. Not yet tested in other applications.
Purification :	The antibody was affinity-purified from rabbit antiserum by affinity-chromatography using epitope-specific immunogen.
Concentration :	1 mg/ml
Storage_stability :	-20°C/1 year
Msds :	MSDS_Antibody.pdf
Other_name :	IL2RG; Cytokine receptor common subunit gamma; Interleukin-2 receptor subunit gamma; IL-2 receptor subunit gamma; IL-2R subunit gamma; IL-2RG; gammaC; p64; CD132
Molecular Weight :	40KD

Product Images



Western Blot analysis of K562 cells using IL-2Ry Polyclonal Antibody.. Secondary antibody was diluted at 1:20000