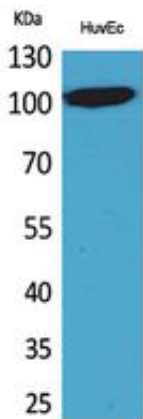




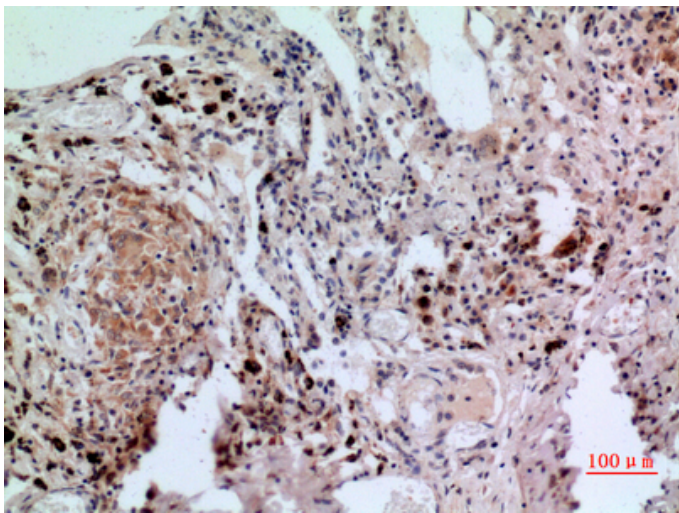
NFATc1 Polyclonal Antibody

Catalog_no :	AT5381
Applications :	WB,IHC-p,ELISA
Reactivity :	Human,Mouse
Category :	抗原抗体
Size :	100µg/50µg/20µg
Gene_name :	NFATC1
Protein_name :	Nuclear factor of activated T-cells cytoplasmic 1
Humangene_id	4772
:	
Humanswissprot	O95644
_no :	
Mouseswissprot	O88942
_no :	
Immunogen :	The antiserum was produced against synthesized peptide derived from the C-terminal region of human NFATC1. AA range:881-930
Specificity :	NFATc1 Polyclonal Antibody detects endogenous levels of NFATc1 protein.
Formulation :	Liquid in PBS containing 50% glycerol, 0.5% BSA and 0.02% sodium azide.
Source :	Rabbit
Dilution :	Western Blot: 1/500 - 1/2000. IHC-p: 1/100-1/300. ELISA: 1/20000. Not yet tested in other applications.
Purification :	The antibody was affinity-purified from rabbit antiserum by affinity-chromatography using epitope-specific immunogen.
Concentration :	1 mg/ml
Storage_stability	-20°C/1 year
:	
Msds :	MSDS_Antibody.pdf
Other_name :	NFATC1; NFAT2; NFATC; Nuclear factor of activated T-cells, cytoplasmic 1; NF-ATc1; NFATc1; NFAT transcription complex cytosolic component; NF-ATc; NFATc
Molecular Weight :	105KD

Product Images



Western Blot analysis of HuvEc cells using NFATc1 Polyclonal Antibody.. Secondary antibody was diluted at 1:20000



Immunohistochemical analysis of paraffin-embedded human-lung, antibody was diluted at 1:100