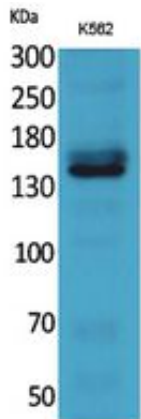


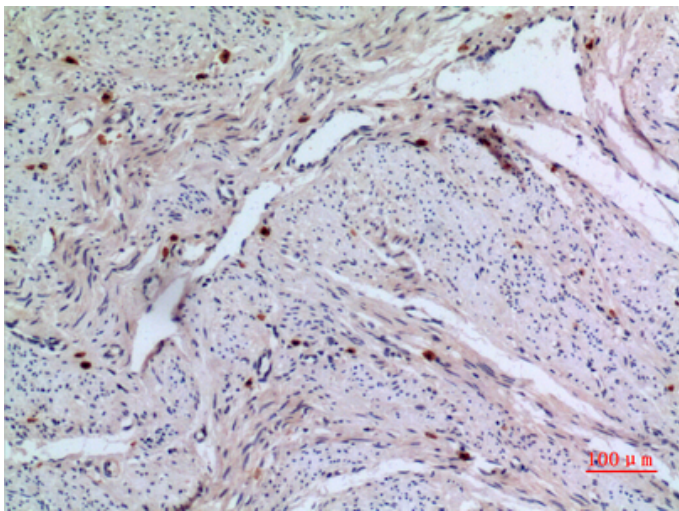
RFC1 Polyclonal Antibody

Catalog_no :	AT5385
Applications :	WB,IHC-p,ELISA
Reactivity :	Human
Category :	抗原抗体
Size :	100µg/50µg/20µg
Gene_name :	RFC1
Protein_name :	Replication factor C subunit 1
Humangene_id :	5981
Humanswissprot_no :	P35251
Immunogen :	The antiserum was produced against synthesized peptide derived from the C-terminal region of human RFC1. AA range:1071-1120
Specificity :	RFC1 Polyclonal Antibody detects endogenous levels of RFC1 protein.
Formulation :	Liquid in PBS containing 50% glycerol, 0.5% BSA and 0.02% sodium azide.
Source :	Rabbit
Dilution :	Western Blot: 1/500 - 1/2000. IHC-p: 1/100-1/300. ELISA: 1/20000. Not yet tested in other applications.
Purification :	The antibody was affinity-purified from rabbit antiserum by affinity-chromatography using epitope-specific immunogen.
Concentration :	1 mg/ml
Storage_stability :	-20°C/1 year
Msds :	MSDS_Antibody.pdf
Other_name :	RFC1; RFC140; Replication factor C subunit 1; Activator 1 140 kDa subunit; A1 140 kDa subunit; Activator 1 large subunit; Activator 1 subunit 1; DNA-binding protein PO-GAReplication factor C 140 kDa subunit; RF-C 140 kDa subunit; RFC140; Replication factor C large subunit
Molecular Weight :	130KD

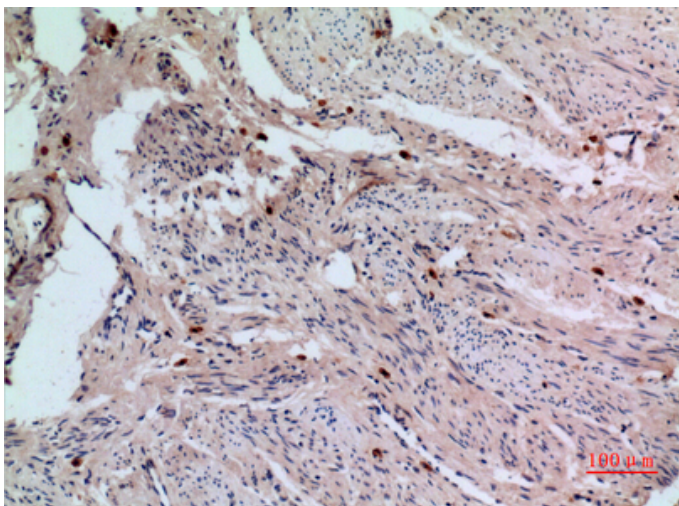
Product Images



Western Blot analysis of K562 cells using RFC1 Polyclonal Antibody.. Secondary antibody was diluted at 1:20000 cells nucleus extracted by Minute TM Cytoplasmic and Nuclear Fractionation kit (SC-003, Inventbiotech, MN, USA).

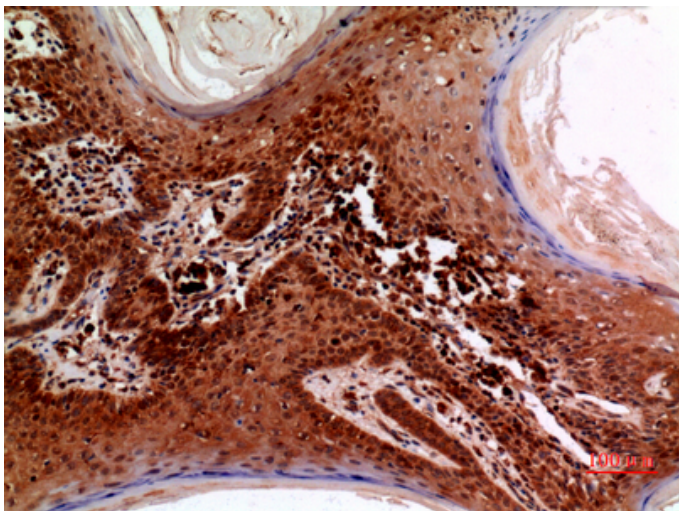
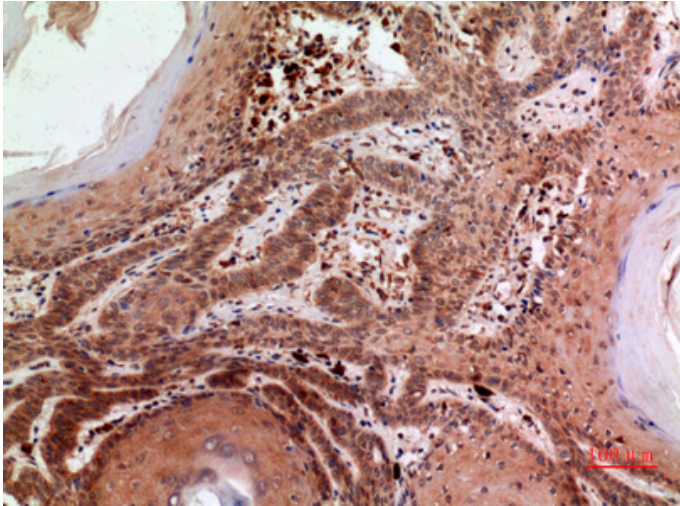


Immunohistochemical analysis of paraffin-embedded human-uterus, antibody was diluted at 1:100



Immunohistochemical analysis of paraffin-embedded human-uterus, antibody was diluted at 1:100

Immunohistochemical analysis of paraffin-embedded human-skin, antibody was diluted at 1:100



Immunohistochemical analysis of paraffin-embedded human-skin, antibody was diluted at 1:100