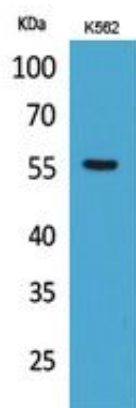


Glut5 Polyclonal Antibody

Catalog_no :	AT5388
Applications :	WB,ELISA
Reactivity :	Human
Category :	抗原抗体
Size :	100µg/50µg/20µg
Gene_name :	SLC2A5
Protein_name :	Solute carrier family 2 facilitated glucose transporter member 5
Humangene_id :	6518
Humanswissprot_no :	P22732
Immunogen :	The antiserum was produced against synthesized peptide derived from the N-terminal region of human SLC2A5. AA range:31-80
Specificity :	Glut5 Polyclonal Antibody detects endogenous levels of Glut5 protein.
Formulation :	Liquid in PBS containing 50% glycerol, 0.5% BSA and 0.02% sodium azide.
Source :	Rabbit
Dilution :	Western Blot: 1/500 - 1/2000. ELISA: 1/20000. Not yet tested in other applications.
Purification :	The antibody was affinity-purified from rabbit antiserum by affinity-chromatography using epitope-specific immunogen.
Concentration :	1 mg/ml
Storage_stability :	-20°C/1 year
Msds :	MSDS_Antibody.pdf
Other_name :	SLC2A5; GLUT5; Solute carrier family 2, facilitated glucose transporter member 5; Fructose transporter; Glucose transporter type 5, small intestine; GLUT-5
Molecular Weight :	55KD

Product Images



Western Blot analysis of K562 cells using Glut5 Polyclonal Antibody.. Secondary antibody was diluted at 1:20000