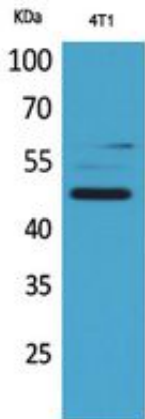


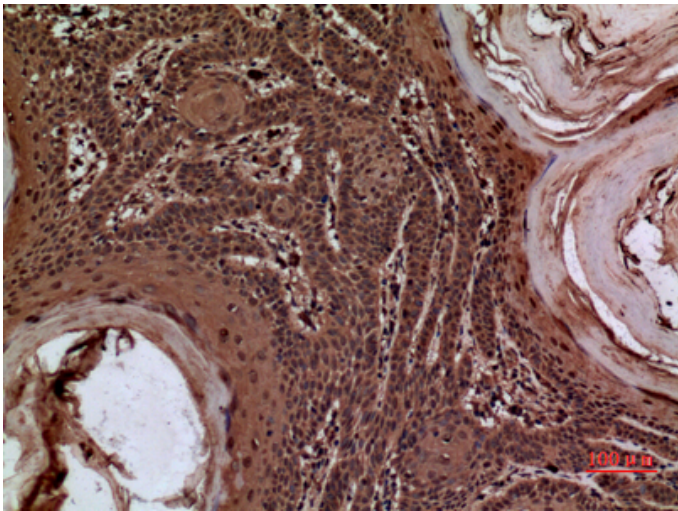
## AACT Polyclonal Antibody

Catalog_no :	AT5391
Applications :	WB,IHC-p,ELISA
Reactivity :	Human
Category :	抗原抗体
Size :	100µg/50µg/20µg
Gene_name :	SERPINA3
Protein_name :	Alpha-1-antichymotrypsin
Humangene_id	<a href="#">12</a>
:	
Humanswissprot	<a href="#">P01011</a>
_no :	
Immunogen :	The antiserum was produced against synthesized peptide derived from the Internal region of human SERPINA3. AA range:251-300
Specificity :	AACT Polyclonal Antibody detects endogenous levels of AACT protein.
Formulation :	Liquid in PBS containing 50% glycerol, 0.5% BSA and 0.02% sodium azide.
Source :	Rabbit
Dilution :	Western Blot: 1/500 - 1/2000. IHC-p: 1/100-1/300. ELISA: 1/20000. Not yet tested in other applications.
Purification :	The antibody was affinity-purified from rabbit antiserum by affinity-chromatography using epitope-specific immunogen.
Concentration :	1 mg/ml
Storage_stability	-20°C/1 year
:	
Msds :	MSDS_Antibody.pdf
Other_name :	SERPINA3; AACT; GIG24; GIG25; Alpha-1-antichymotrypsin; ACT; Cell growth-inhibiting gene 24/25 protein; Serpin A3
Molecular Weight :	46KD

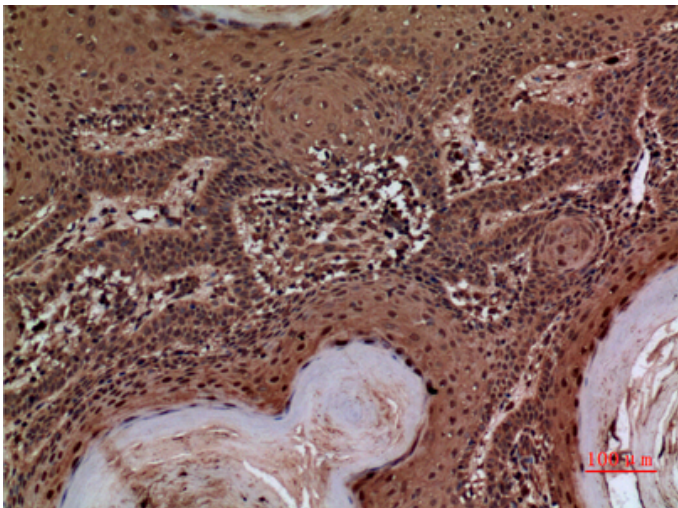
## Product Images



Western Blot analysis of 4T1 cells using AACT Polyclonal Antibody.. Secondary antibody was diluted at 1:20000 cells nucleus extracted by Minute TM Cytoplasmic and Nuclear Fractionation kit (SC-003, Invent biotech, MN, USA).

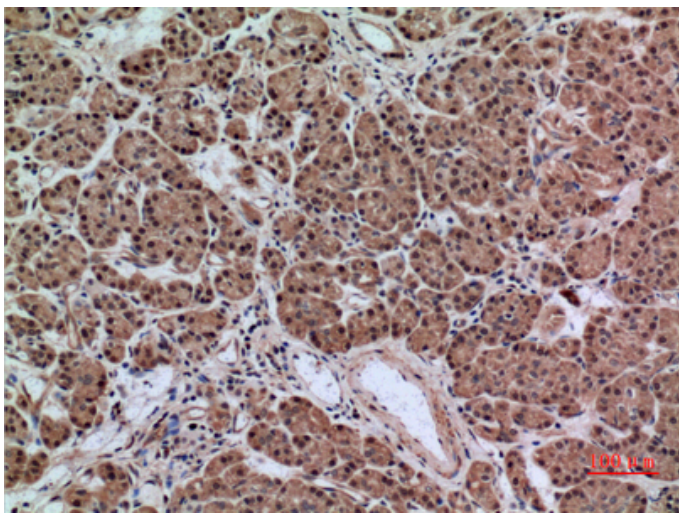
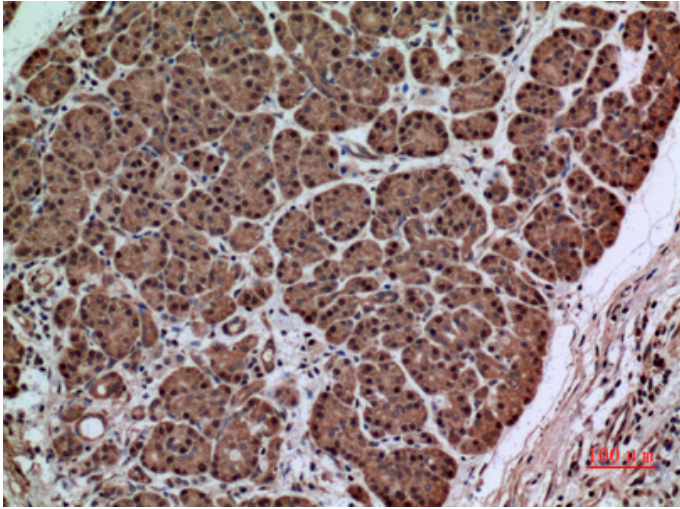


Immunohistochemical analysis of paraffin-embedded human-skin, antibody was diluted at 1:100



Immunohistochemical analysis of paraffin-embedded human-skin, antibody was diluted at 1:100

Immunohistochemical analysis of paraffin-embedded human-pancreas-cancer, antibody was diluted at 1:100



Immunohistochemical analysis of paraffin-embedded human-pancreas-cancer, antibody was diluted at 1:100