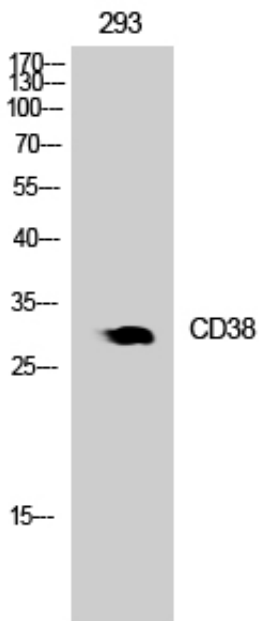




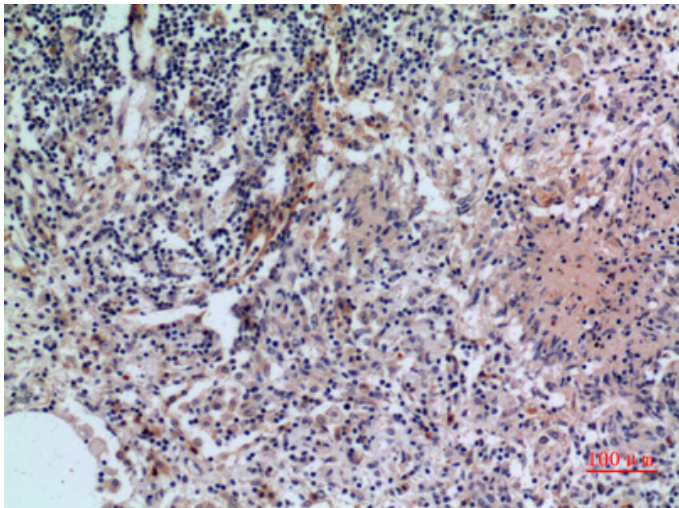
CD38 Polyclonal Antibody

Catalog_no :	AT5392
Applications :	WB,IHC-p,ELISA
Reactivity :	Human
Category :	抗原抗体
Size :	100µg/50µg/20µg
Gene_name :	CD38
Protein_name :	ADP-ribosyl cyclase 1
Humangene_id	952
:	
Humanswissprot	P28907
_no :	
Immunogen :	The antiserum was produced against synthesized peptide derived from the Internal region of human CD38. AA range:211-260
Specificity :	CD38 Polyclonal Antibody detects endogenous levels of CD38 protein.
Formulation :	Liquid in PBS containing 50% glycerol, 0.5% BSA and 0.02% sodium azide.
Source :	Rabbit
Dilution :	Western Blot: 1/500 - 1/2000. IHC-p: 1/100-1/300. ELISA: 1/20000. Not yet tested in other applications.
Purification :	The antibody was affinity-purified from rabbit antiserum by affinity-chromatography using epitope-specific immunogen.
Concentration :	1 mg/ml
Storage_stability	-20°C/1 year
:	
Msds :	MSDS_Antibody.pdf
Other_name :	CD38; ADP-ribosyl cyclase 1; Cyclic ADP-ribose hydrolase 1; cADPr hydrolase 1; T10; CD38
Molecular Weight :	35KD

Product Images



Western Blot analysis of 293 cells using CD38 Polyclonal Antibody.. Secondary antibody was diluted at 1:20000 cells nucleus extracted by Minute TM Cytoplasmic and Nuclear Fractionation kit (SC-003, Inventbiotech, MN, USA).



Immunohistochemical analysis of paraffin-embedded human-lung, antibody was diluted at 1:100