

## Bonzo Polyclonal Antibody

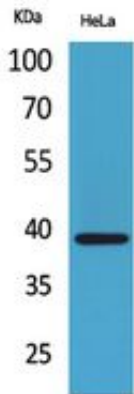
Catalog_no :	AT5398
Applications :	WB,IHC-p,ELISA
Reactivity :	Human
Category :	抗原抗体
Size :	100µg/50µg/20µg
Gene_name :	CXCR6
Protein_name :	C-X-C chemokine receptor type 6
Humangene_id :	<a href="#">10663</a>
Humanswissprot_no :	<a href="#">O00574</a>
Mousegene_id :	<a href="#">80901</a>
Mouseswissprot_no :	<a href="#">Q9EQ16</a>
Immunogen :	The antiserum was produced against synthesized peptide derived from the N-terminal region of human CXCR6. AA range:1-50
Specificity :	Bonzo Polyclonal Antibody detects endogenous levels of Bonzo protein.
Formulation :	Liquid in PBS containing 50% glycerol, 0.5% BSA and 0.02% sodium azide.
Source :	Rabbit
Dilution :	Western Blot: 1/500 - 1/2000. IHC-p: 1/100-1/300. ELISA: 1/20000. Not yet tested in other applications.
Purification :	The antibody was affinity-purified from rabbit antiserum by affinity-chromatography using epitope-specific immunogen.
Concentration :	1 mg/ml
Storage_stability :	-20°C/1 year
Msds :	<a href="#">MSDS_Antibody.pdf</a>
Other_name :	CXCR6; BONZO; STRL33; TYMSTR; C-X-C chemokine receptor type 6; CXC-R6; CXCR-6; CDw186; G-protein coupled receptor STRL33; G-protein coupled receptor bonzo; CD186
Molecular	39KD



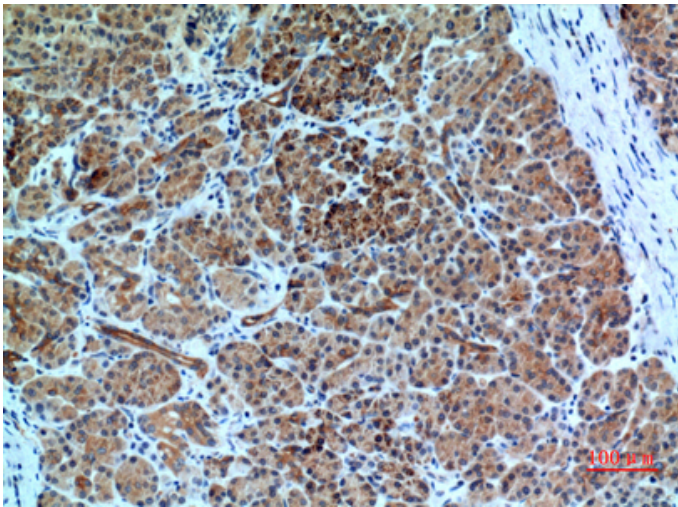
Weight :

---

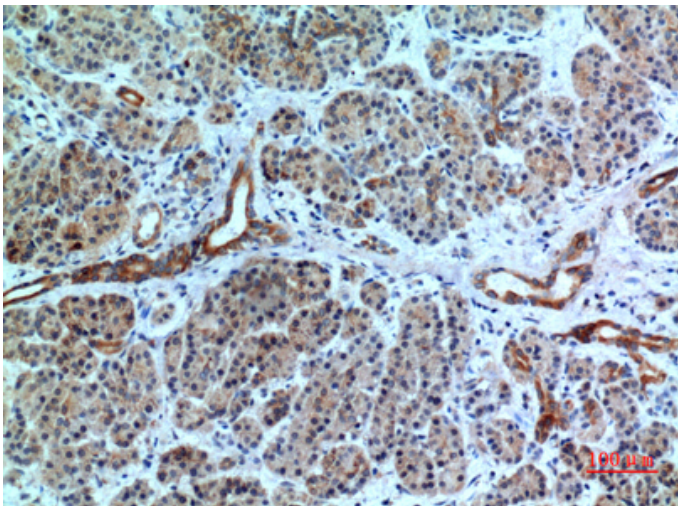
## Product Images



Western Blot analysis of HeLa cells using Bonzo Polyclonal Antibody.. Secondary antibody was diluted at 1:20000

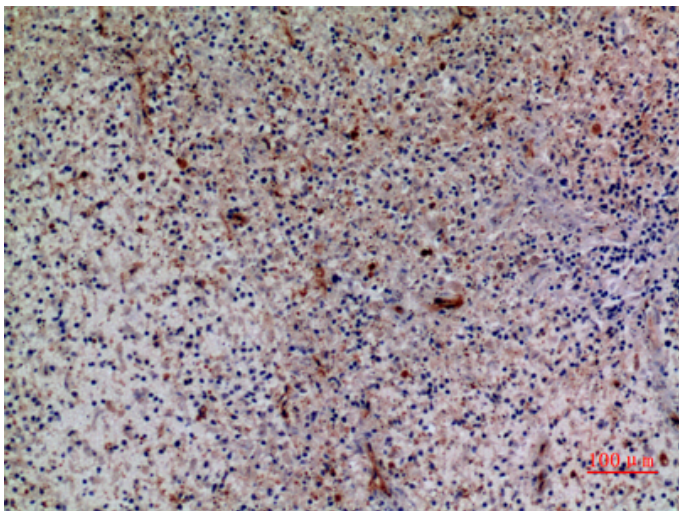
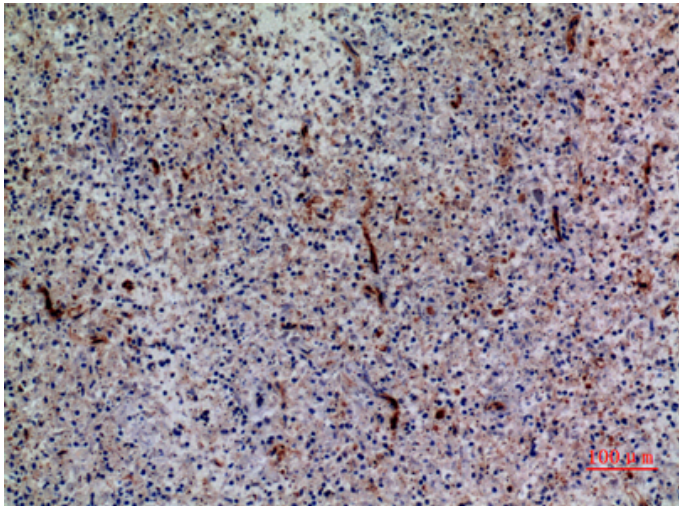


Immunohistochemical analysis of paraffin-embedded human-pancreas, antibody was diluted at 1:100



Immunohistochemical analysis of paraffin-embedded human-pancreas, antibody was diluted at 1:100

Immunohistochemical analysis of paraffin-embedded human-spleen, antibody was diluted at 1:100



Immunohistochemical analysis of paraffin-embedded human-spleen, antibody was diluted at 1:100