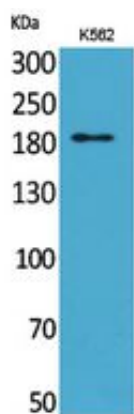




CD169 Polyclonal Antibody

Catalog_no :	AT5399
Applications :	WB,ELISA
Reactivity :	Human
Category :	抗原抗体
Size :	100µg/50µg/20µg
Gene_name :	SIGLEC1
Protein_name :	Sialoadhesin
Humangene_id :	6614
Humanswissprot_no :	Q9BZZ2
Mousegene_id :	20612
Mouseswissprot_no :	Q62230
Immunogen :	The antiserum was produced against synthesized peptide derived from the Internal region of human SIGLEC1. AA range:1321-1370
Specificity :	CD169 Polyclonal Antibody detects endogenous levels of CD169 protein.
Formulation :	Liquid in PBS containing 50% glycerol, 0.5% BSA and 0.02% sodium azide.
Source :	Rabbit
Dilution :	Western Blot: 1/500 - 1/2000. ELISA: 1/20000. Not yet tested in other applications.
Purification :	The antibody was affinity-purified from rabbit antiserum by affinity-chromatography using epitope-specific immunogen.
Concentration :	1 mg/ml
Storage_stability :	-20°C/1 year
Msds :	MSDS_Antibody.pdf
Other_name :	SIGLEC1; SN; Sialoadhesin; Sialic acid-binding Ig-like lectin 1; Siglec-1; CD169
Molecular Weight :	190KD

Product Images



Western Blot analysis of K562 cells using CD169 Polyclonal Antibody.. Secondary antibody was diluted at 1:20000