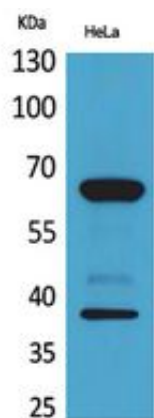




DNAM-1 Polyclonal Antibody

Catalog_no :	AT5402
Applications :	WB,ELISA
Reactivity :	Human
Category :	抗原抗体
Size :	100µg/50µg/20µg
Gene_name :	CD226
Protein_name :	CD226 antigen
Humangene_id :	10666
Humanswissprot_no :	Q15762
Mousegene_id :	225825
Mouseswissprot_no :	Q8K4F0
Immunogen :	The antiserum was produced against synthesized peptide derived from the Internal region of human CD226. AA range:71-120
Specificity :	DNAM-1 Polyclonal Antibody detects endogenous levels of DNAM-1 protein.
Formulation :	Liquid in PBS containing 50% glycerol, 0.5% BSA and 0.02% sodium azide.
Source :	Rabbit
Dilution :	Western Blot: 1/500 - 1/2000. ELISA: 1/20000. Not yet tested in other applications.
Purification :	The antibody was affinity-purified from rabbit antiserum by affinity-chromatography using epitope-specific immunogen.
Concentration :	1 mg/ml
Storage_stability :	-20°C/1 year
Msds :	MSDS_Antibody.pdf
Other_name :	CD226; DNAM1; CD226 antigen; DNAX accessory molecule 1; DNAM-1; CD226
Molecular Weight :	38KD

Product Images



Western Blot analysis of HeLa cells using DNAM-1 Polyclonal Antibody.. Secondary antibody was diluted at 1:20000