

CD294 Polyclonal Antibody

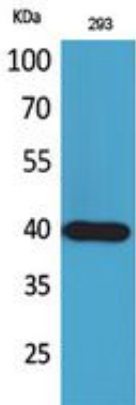
Catalog_no :	AT5405
Applications :	WB,IHC-p,ELISA
Reactivity :	Human,Mouse
Category :	抗原抗体
Size :	100µg/50µg/20µg
Gene_name :	PTGDR2
Protein_name :	Prostaglandin D2 receptor 2
Humangene_id	11251
:	
Humanswissprot	Q9Y5Y4
_no :	
Mousegene_id :	14764
Mouseswissprot	Q9Z2J6
_no :	
Ratgene_id :	309212
Ratswissprot_no	Q6XKD3
:	
Immunogen :	The antiserum was produced against synthesized peptide derived from the Internal region of human PTGDR2. AA range:161-210
Specificity :	CD294 Polyclonal Antibody detects endogenous levels of CD294 protein.
Formulation :	Liquid in PBS containing 50% glycerol, 0.5% BSA and 0.02% sodium azide.
Source :	Rabbit
Dilution :	Western Blot: 1/500 - 1/2000. IHC-p: 1/100-1/300. ELISA: 1/20000. Not yet tested in other applications.
Purification :	The antibody was affinity-purified from rabbit antiserum by affinity-chromatography using epitope-specific immunogen.
Concentration :	1 mg/ml
Storage_stability	-20°C/1 year
:	
Msds :	MSDS_Antibody.pdf



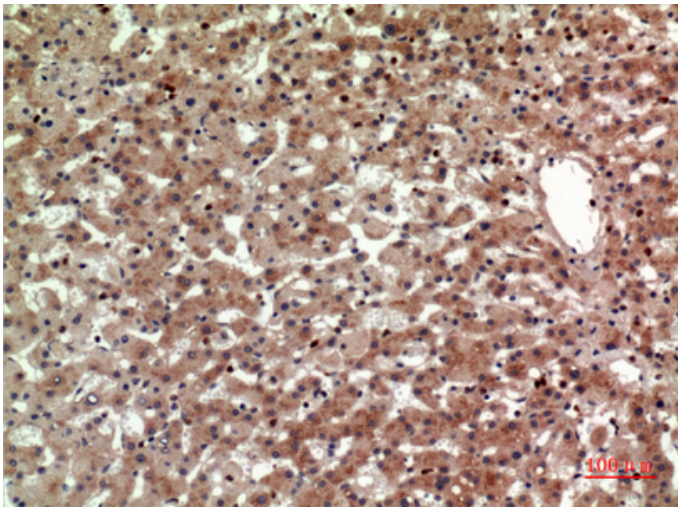
Other_name : PTGDR2; CRTH2; DL1R; GPR44; Prostaglandin D2 receptor 2; Chemoattractant receptor-homologous molecule expressed on Th2 cells; G-protein coupled receptor 44; CD294

Molecular Weight : 43KD

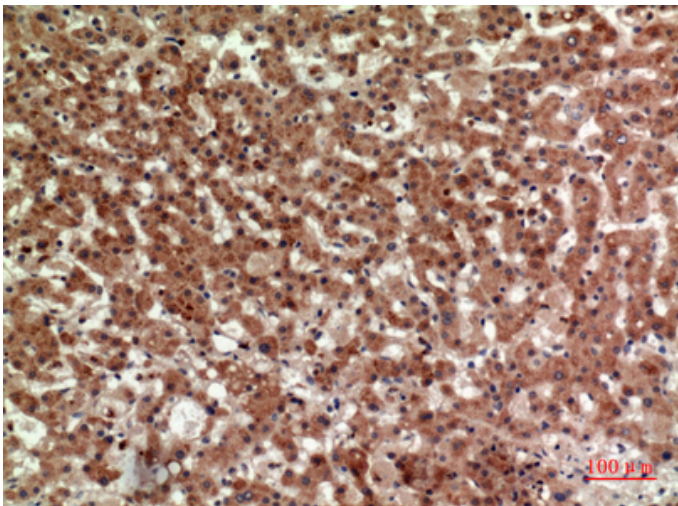
Product Images



Western Blot analysis of 293 cells using CD294 Polyclonal Antibody.. Secondary antibody was diluted at 1:20000



Immunohistochemical analysis of paraffin-embedded human-liver, antibody was diluted at 1:100



Immunohistochemical analysis of paraffin-embedded human-liver, antibody was diluted at 1:100