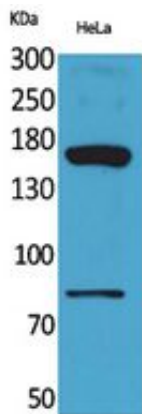




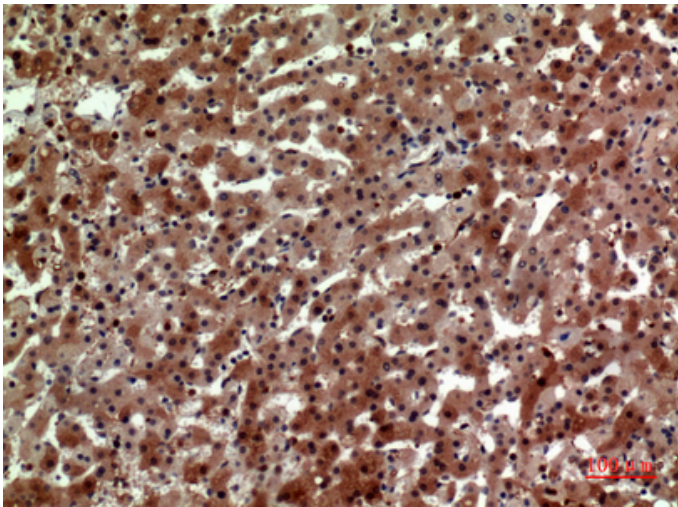
## CD163b Polyclonal Antibody

Catalog_no :	AT5406
Applications :	WB,IHC-p,ELISA
Reactivity :	Human
Category :	抗原抗体
Size :	100µg/50µg/20µg
Gene_name :	CD163L1
Protein_name :	Scavenger receptor cysteine-rich type 1 protein M160
Humangene_id :	<a href="#">283316</a>
Humanswissprot_no :	<a href="#">Q9NR16</a>
Immunogen :	The antiserum was produced against synthesized peptide derived from the Internal region of human CD163L1. AA range:391-440
Specificity :	CD163b Polyclonal Antibody detects endogenous levels of CD163b protein.
Formulation :	Liquid in PBS containing 50% glycerol, 0.5% BSA and 0.02% sodium azide.
Source :	Rabbit
Dilution :	Western Blot: 1/500 - 1/2000. IHC-p: 1/100-1/300. ELISA: 1/20000. Not yet tested in other applications.
Purification :	The antibody was affinity-purified from rabbit antiserum by affinity-chromatography using epitope-specific immunogen.
Concentration :	1 mg/ml
Storage_stability :	-20°C/1 year
Msds :	MSDS_Antibody.pdf
Other_name :	CD163L1; CD163B; M160; Scavenger receptor cysteine-rich type 1 protein M160; CD163 antigen-like 1; CD163b
Molecular Weight :	160KD

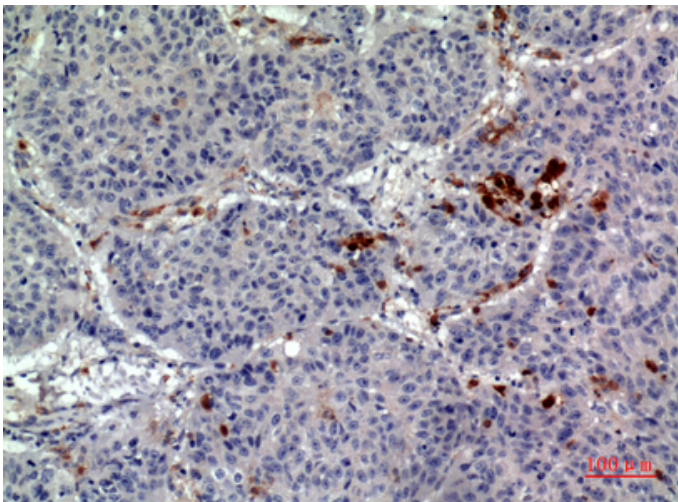
## Product Images



Western Blot analysis of HeLa cells using CD163b Polyclonal Antibody.. Secondary antibody was diluted at 1:20000



Immunohistochemical analysis of paraffin-embedded human-liver, antibody was diluted at 1:100



Immunohistochemical analysis of paraffin-embedded human-lung, antibody was diluted at 1:100

Immunohistochemical analysis of paraffin-embedded human-lung, antibody was diluted at 1:100

