

## CD158b2/j Polyclonal Antibody

Catalog_no :	AT5407
Applications :	WB,ELISA
Reactivity :	Human
Category :	抗原抗体
Size :	100µg/50µg/20µg
Gene_name :	KIR2DL3/KIR2DS2
Protein_name :	Killer cell immunoglobulin-like receptor 2DL3/Killer cell immunoglobulin-like receptor 2DS2
Humangene_id :	<a href="#">3804/100132285</a>
Humanswissprot_no :	<a href="#">P43628/P43631</a>
Immunogen :	The antiserum was produced against synthesized peptide derived from the Internal region of human KIR2DL3/KIR2DS2. AA range:131-180
Specificity :	CD158b2/j Polyclonal Antibody detects endogenous levels of CD158b2/j protein.
Formulation :	Liquid in PBS containing 50% glycerol, 0.5% BSA and 0.02% sodium azide.
Source :	Rabbit
Dilution :	Western Blot: 1/500 - 1/2000. ELISA: 1/20000. Not yet tested in other applications.
Purification :	The antibody was affinity-purified from rabbit antiserum by affinity-chromatography using epitope-specific immunogen.
Concentration :	1 mg/ml
Storage_stability :	-20°C/1 year
Msds :	MSDS_Antibody.pdf
Other_name :	KIR2DL3; CD158B2; KIRCL23; NKAT2; Killer cell immunoglobulin-like receptor 2DL3; CD158 antigen-like family member B2; KIR-023GB; Killer inhibitory receptor cl 2-3; MHC class I NK cell receptor; NKAT2a; NKAT2bNatural killer-associated transcript 2; NKAT-2; p58 natural killer cell receptor clone CL-6; p58 NK receptor CL-6; p58.2 MHC class-I-specific NK receptor; CD158b2; KIR2DS2; CD158J; NKAT5; Killer cell immunoglobulin-like receptor 2DS2;
Molecular Weight :	38KD

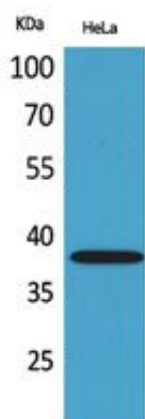


**专注二抗产品**

Biodragon旗下品牌

---

## Product Images



Western Blot analysis of HeLa cells using CD158b2/j Polyclonal Antibody.. Secondary antibody was diluted at 1:20000