



Cerberus Polyclonal Antibody

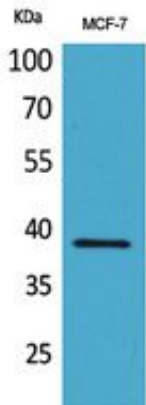
Catalog_no :	AT5410
Applications :	WB,IHC-p,ELISA
Reactivity :	Human,Rat
Category :	抗原抗体
Size :	100µg/50µg/20µg
Gene_name :	CER1
Protein_name :	Cerberus
Humangene_id :	9350
Humanswissprot_no :	O95813
Mousegene_id :	12622
Mouseswissprot_no :	O55233
Immunogen :	The antiserum was produced against synthesized peptide derived from the Internal region of human CER1. AA range:91-140
Specificity :	Cerberus Polyclonal Antibody detects endogenous levels of Cerberus protein.
Formulation :	Liquid in PBS containing 50% glycerol, 0.5% BSA and 0.02% sodium azide.
Source :	Rabbit
Dilution :	Western Blot: 1/500 - 1/2000. IHC-p: 1/100-1/300. ELISA: 1/20000. Not yet tested in other applications.
Purification :	The antibody was affinity-purified from rabbit antiserum by affinity-chromatography using epitope-specific immunogen.
Concentration :	1 mg/ml
Storage_stability :	-20°C/1 year
Msds :	MSDS_Antibody.pdf
Other_name :	CER1; DAND4; Cerberus; Cerberus-related protein; DAN domain family member 4
Molecular Weight :	30KD



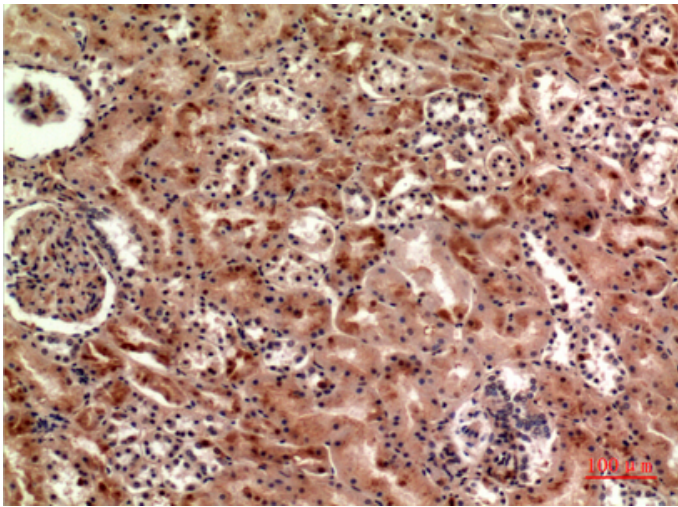
专注二抗产品

Biodragon旗下品牌

Product Images



Western Blot analysis of MCF-7 cells using Cerberus Polyclonal Antibody. Antibody was diluted at 1:500. Secondary antibody was diluted at 1:20000



Immunohistochemical analysis of paraffin-embedded human kidney, antibody was diluted at 1:100



Immunohistochemical analysis of paraffin-embedded human spleen, antibody was diluted at 1:100

Western Blot analysis of Rat-heart Rat-brain using Cerberus Polyclonal Antibody diluted at 1:500. Secondary antibody was diluted at 1:20000

