

MDA-7 Polyclonal Antibody

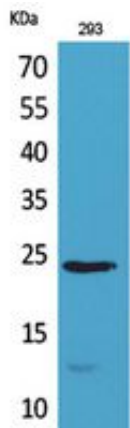
Catalog_no :	<u>AT5411</u>
Applications :	<u>WB,IHC-p,ELISA</u>
Reactivity :	<u>Human</u>
Category :	<u>抗原抗体</u>
Size :	<u>100µg/50µg/20µg</u>
Gene_name :	<u>IL24</u>
Protein_name :	<u>Interleukin-24</u>
Humangene_id :	<u>11009</u>
Humanswissprot_no :	<u>Q13007</u>
Mousegene_id :	<u>93672</u>
Mouseswissprot_no :	<u>Q925S4</u>
Ratgene_id :	<u>170819</u>
Ratswissprot_no :	<u>Q9JI24</u>
Immunogen :	<u>The antiserum was produced against synthesized peptide derived from the Internal region of human IL24. AA range:131-180</u>
Specificity :	<u>MDA-7 Polyclonal Antibody detects endogenous levels of MDA-7 protein.</u>
Formulation :	<u>Liquid in PBS containing 50% glycerol, 0.5% BSA and 0.02% sodium azide.</u>
Source :	<u>Rabbit</u>
Dilution :	<u>Western Blot: 1/500 - 1/2000. IHC-p: 1/100-1/300. ELISA: 1/20000. Not yet tested in other applications.</u>
Purification :	<u>The antibody was affinity-purified from rabbit antiserum by affinity-chromatography using epitope-specific immunogen.</u>
Concentration :	<u>1 mg/ml</u>
Storage_stability :	<u>-20°C/1 year</u>
Msds :	<u>MSDS_Antibody.pdf</u>



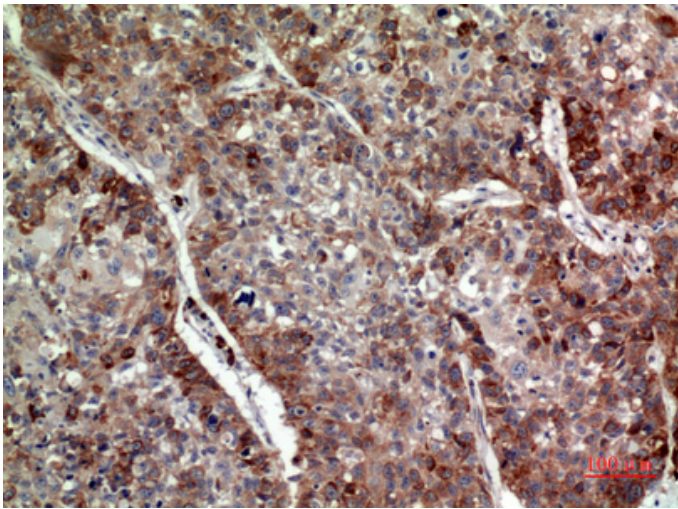
Other_name : IL24; MDA7; ST16; Interleukin-24; IL-24; Melanoma differentiation-associated gene 7 protein; MDA-7; Suppression of tumorigenicity 16 protein

Molecular Weight : 24KD

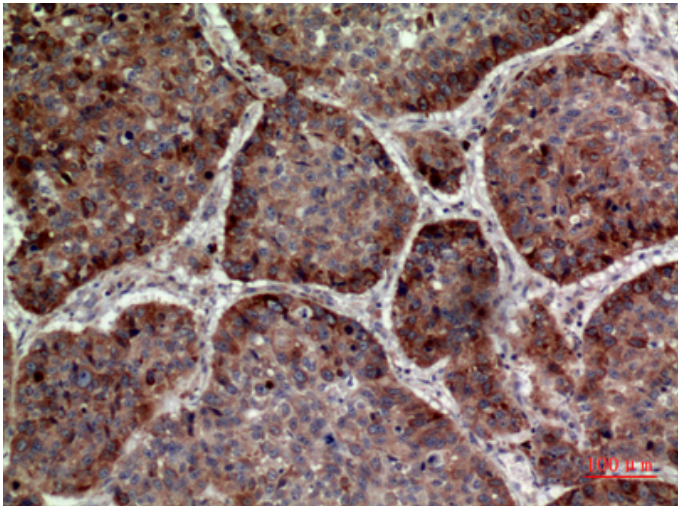
Product Images



Western Blot analysis of 293 cells using MDA-7 Polyclonal Antibody.. Secondary antibody was diluted at 1:20000



Immunohistochemical analysis of paraffin-embedded human-lung, antibody was diluted at 1:100



Immunohistochemical analysis of paraffin-embedded human-lung, antibody was diluted at 1:100