



Nov Polyclonal Antibody

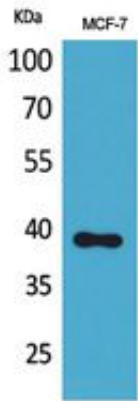
Catalog_no :	AT5412
Applications :	WB,IHC-p,ELISA
Reactivity :	Human,Mouse
Category :	抗原抗体
Size :	100µg/50µg/20µg
Gene_name :	NOV
Protein_name :	Protein NOV homolog
Humangene_id	4856
:	
Humanswissprot	P48745
_no :	
Mousegene_id :	18133
Mouseswissprot	Q64299
_no :	
Ratgene_id :	81526
Ratswissprot_no	Q9QZQ5
:	
Immunogen :	The antiserum was produced against synthesized peptide derived from the Internal region of human NOV. AA range:221-270
Specificity :	Nov Polyclonal Antibody detects endogenous levels of Nov protein.
Formulation :	Liquid in PBS containing 50% glycerol, 0.5% BSA and 0.02% sodium azide.
Source :	Rabbit
Dilution :	Western Blot: 1/500 - 1/2000. IHC-p: 1/100-1/300. ELISA: 1/20000. Not yet tested in other applications.
Purification :	The antibody was affinity-purified from rabbit antiserum by affinity-chromatography using epitope-specific immunogen.
Concentration :	1 mg/ml
Storage_stability	-20°C/1 year
:	
Msds :	MSDS_Antibody.pdf



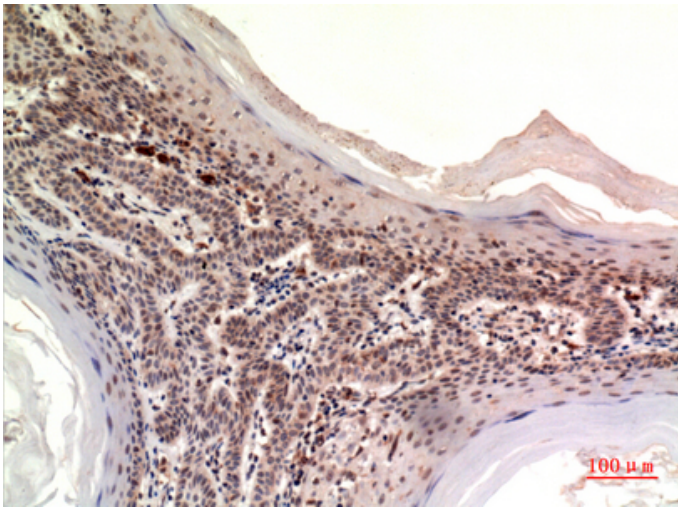
Other_name : NOV; CCN3; IGFBP9; NOVH; Protein NOV homolog; NovH; CCN family member 3; Insulin-like growth factor-binding protein 9; IBP-9; IGF-binding protein 9; IGFBP-9; Nephroblastoma-overexpressed gene protein homolog

Molecular Weight : 39KD

Product Images



Western Blot analysis of MCF-7 cells using Nov Polyclonal Antibody.. Secondary antibody was diluted at 1:20000



Immunohistochemical analysis of paraffin-embedded human-skin, antibody was diluted at 1:100