

TPO Polyclonal Antibody

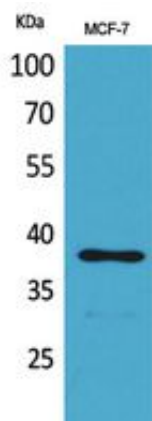
Catalog_no :	AT5413
Applications :	WB,IHC-p,ELISA
Reactivity :	Human
Category :	抗原抗体
Size :	100µg/50µg/20µg
Gene_name :	THPO
Protein_name :	Thrombopoietin
Humangene_id :	7066
Humanswissprot_no :	P40225
Mousegene_id :	21832
Mouseswissprot_no :	P40226
Ratgene_id :	81811
Ratswissprot_no :	P49745
Immunogen :	The antiserum was produced against synthesized peptide derived from the Internal region of human THPO. AA range:41-90
Specificity :	TPO Polyclonal Antibody detects endogenous levels of TPO protein.
Formulation :	Liquid in PBS containing 50% glycerol, 0.5% BSA and 0.02% sodium azide.
Source :	Rabbit
Dilution :	Western Blot: 1/500 - 1/2000. IHC-p: 1/100-1/300. ELISA: 1/20000. Not yet tested in other applications.
Purification :	The antibody was affinity-purified from rabbit antiserum by affinity-chromatography using epitope-specific immunogen.
Concentration :	1 mg/ml
Storage_stability :	-20°C/1 year
Msds :	MSDS_Antibody.pdf



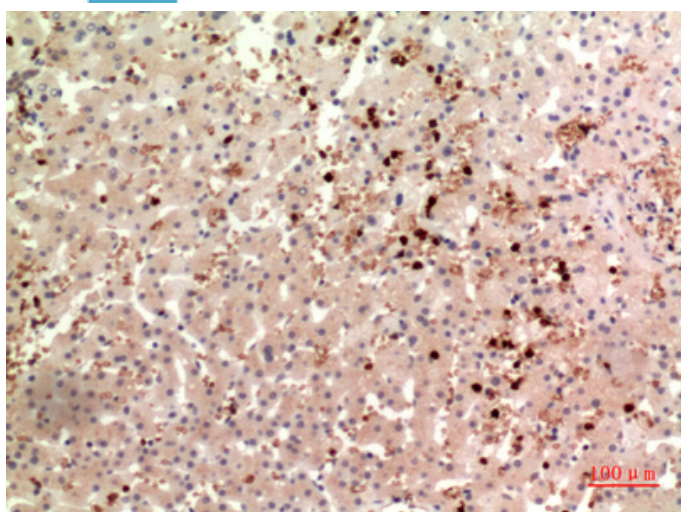
Other_name : THPO; MGDF; Thrombopoietin; C-mpl ligand; ML; Megakaryocyte colony-stimulating factor; Megakaryocyte growth and development factor; MGDF; Myeloproliferative leukemia virus oncogene ligand

Molecular Weight : 38KD

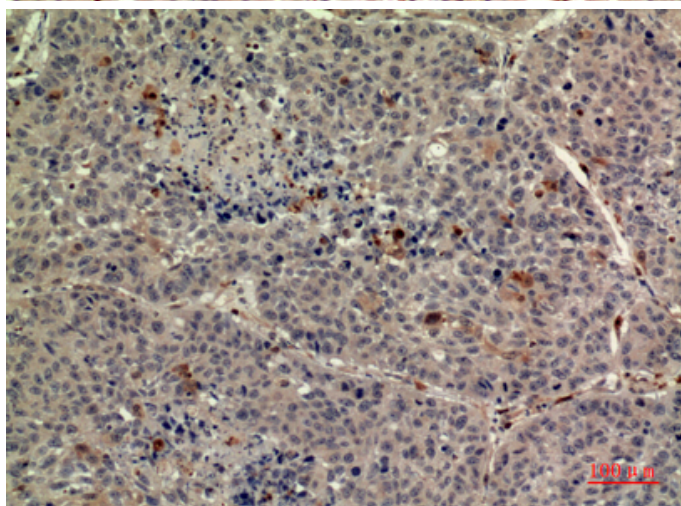
Product Images



Western Blot analysis of MCF-7 cells using TPO Polyclonal Antibody.. Secondary antibody was diluted at 1:20000

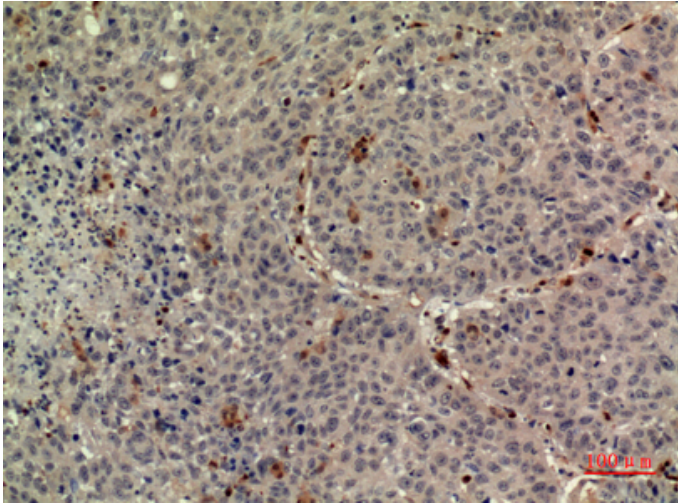


Immunohistochemical analysis of paraffin-embedded human-liver, antibody was diluted at 1:100

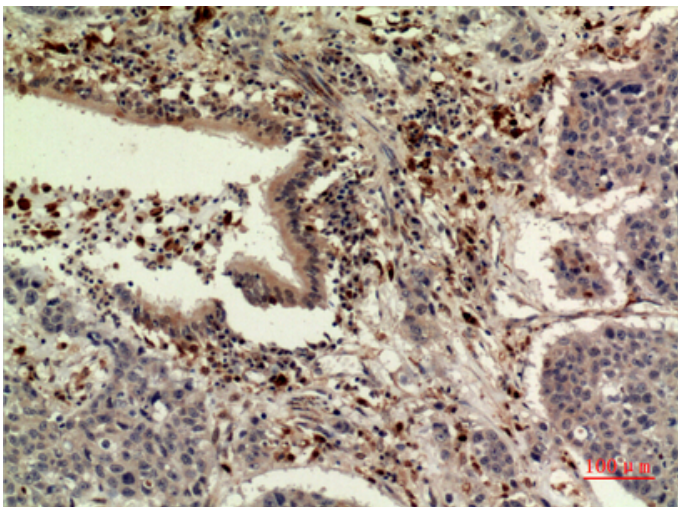


Immunohistochemical analysis of paraffin-embedded human-liver, antibody was diluted at 1:100

Immunohistochemical analysis of paraffin-embedded human-liver, antibody was diluted at 1:100



Immunohistochemical analysis of paraffin-embedded human-liver, antibody was diluted at 1:100



Immunohistochemical analysis of paraffin-embedded human-liver, antibody was diluted at 1:100

