

## PD-ECGF Polyclonal Antibody

Catalog_no :	<u>AT5414</u>
Applications :	<u>WB,IHC-p,ELISA</u>
Reactivity :	<u>Human</u>
Category :	<u>抗原抗体</u>
Size :	<u>100µg/50µg/20µg</u>
Gene_name :	<u>TYMP</u>
Protein_name :	<u>Thymidine phosphorylase</u>
Humangene_id	<u><a href="#">1890</a></u>
:	<u></u>
Humanswissprot	<u><a href="#">P19971</a></u>
_no :	<u></u>
Mousegene_id :	<u><a href="#">72962</a></u>
Mouseswissprot	<u><a href="#">Q99N42</a></u>
_no :	<u></u>
Ratgene_id :	<u><a href="#">315219</a></u>
Ratswissprot_no	<u><a href="#">Q5FVR2</a></u>
:	<u></u>
Immunogen :	<u>The antiserum was produced against synthesized peptide derived from the N-terminal region of human TYMP. AA range:11-60</u>
Specificity :	<u>PD-ECGF Polyclonal Antibody detects endogenous levels of PD-ECGF protein.</u>
Formulation :	<u>Liquid in PBS containing 50% glycerol, 0.5% BSA and 0.02% sodium azide.</u>
Source :	<u>Rabbit</u>
Dilution :	<u>Western Blot: 1/500 - 1/2000. IHC-p: 1/100-1/300. ELISA: 1/20000. Not yet tested in other applications.</u>
Purification :	<u>The antibody was affinity-purified from rabbit antiserum by affinity-chromatography using epitope-specific immunogen.</u>
Concentration :	<u>1 mg/ml</u>
Storage_stability	<u>-20°C/1 year</u>
:	<u></u>
Msds :	<u>MSDS_Antibody.pdf</u>



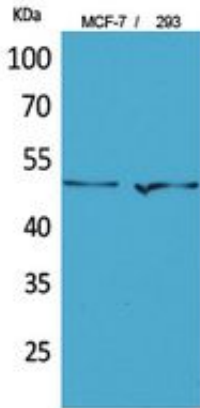
Other\_name : TYMP; ECGF1; Thymidine phosphorylase; TP; Gliostatin; Platelet-derived endothelial cell growth factor; PD-ECGF; TdRPase

---

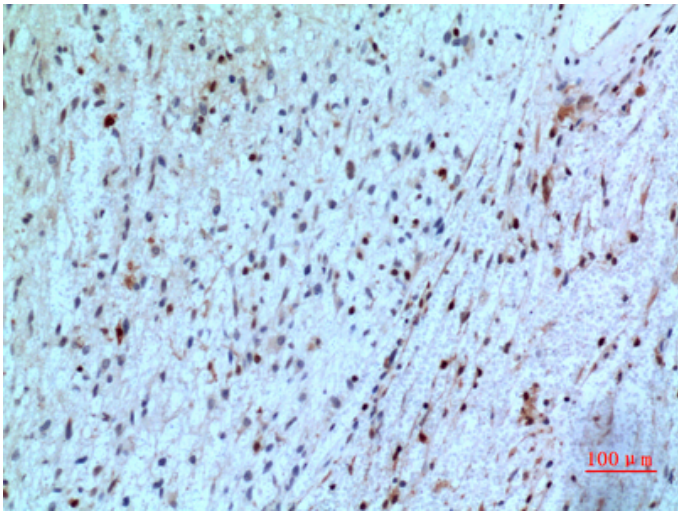
Molecular Weight : 50KD

---

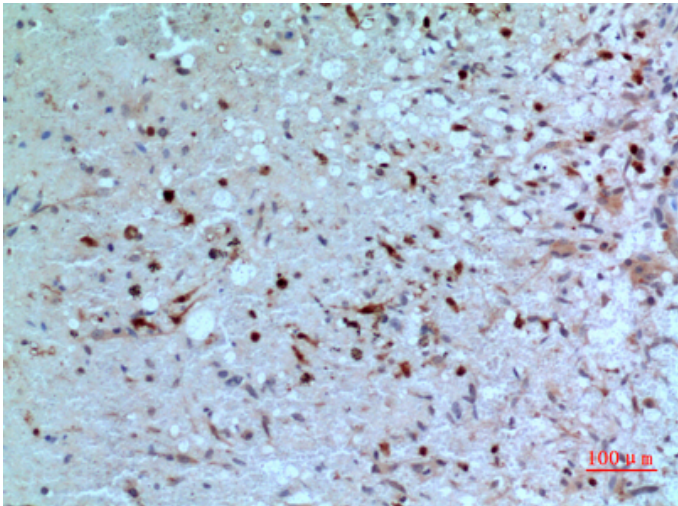
## Product Images



Western Blot analysis of MCF-7, 293 cells using PD-EGGF Polyclonal Antibody.. Secondary antibody was diluted at 1:20000

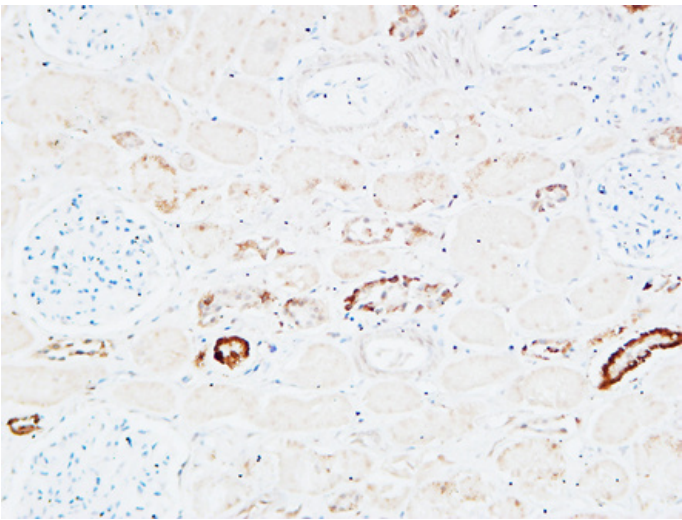
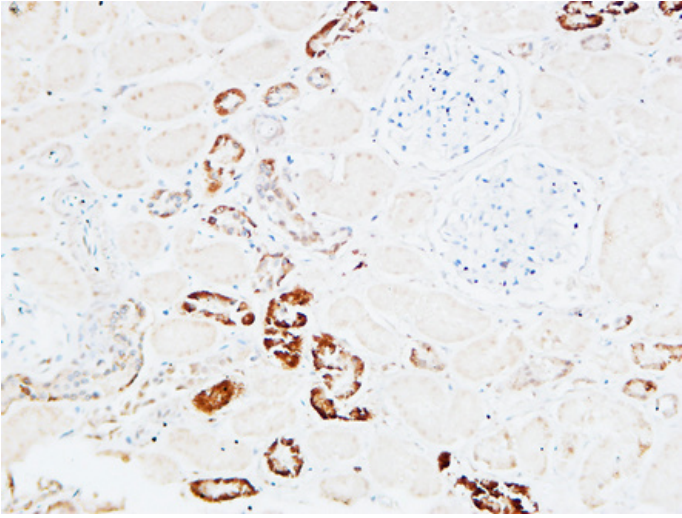


Immunohistochemical analysis of paraffin-embedded human-brain, antibody was diluted at 1:100

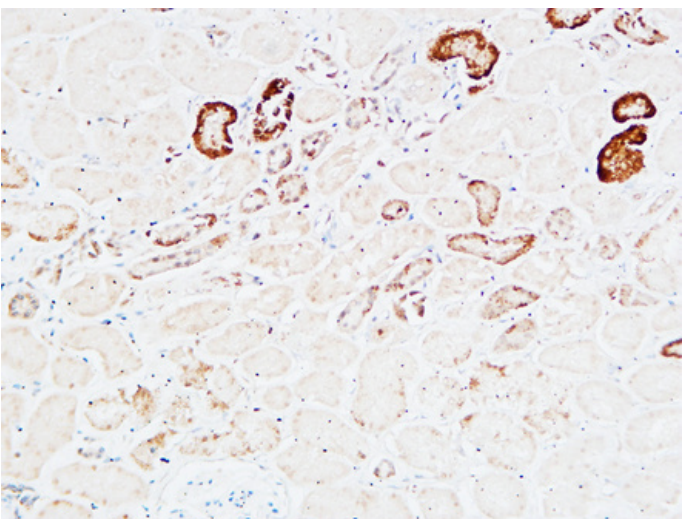


Immunohistochemical analysis of paraffin-embedded human-brain, antibody was diluted at 1:100

Immunohistochemical analysis of paraffin-embedded Human kidney. 1, Antibody was diluted at 1:200(4°, overnight). 2, High-pressure and temperature EDTA, pH8.0 was used for antigen retrieval. 3, Secondary antibody was diluted at 1:200(room temperature, 30min).



Immunohistochemical analysis of paraffin-embedded Human kidney. 1, Antibody was diluted at 1:200(4°,overnight). 2, High-pressure and temperature EDTA, pH8.0 was used for antigen retrieval. 3,Secondary antibody was diluted at 1:200(room temperature, 30min).



Immunohistochemical analysis of paraffin-embedded Human kidney. 1, Antibody was diluted at 1:200(4°,overnight). 2, High-pressure and temperature EDTA, pH8.0 was used for antigen retrieval. 3,Secondary antibody was diluted at 1:200(room temperature, 30min).