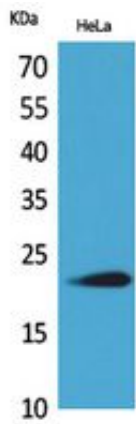




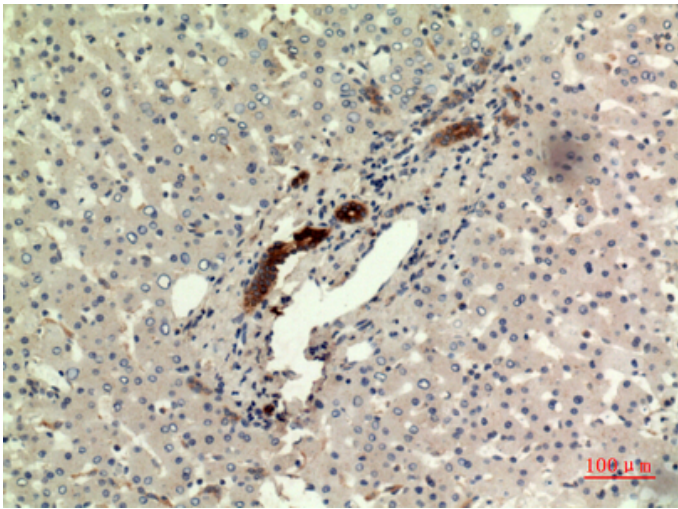
## IFN- $\omega$ Polyclonal Antibody

Catalog_no :	AT5415
Applications :	WB,IHC-p,ELISA
Reactivity :	Human
Category :	抗原抗体
Size :	100 $\mu$ g/50 $\mu$ g/20 $\mu$ g
Gene_name :	IFNW1
Protein_name :	Interferon omega-1
Humangene_id :	<a href="#">3467</a>
Humanswissprot_no :	<a href="#">P05000</a>
Immunogen :	The antiserum was produced against synthesized peptide derived from the C-terminal region of human IFNW1. AA range:146-195
Specificity :	IFN- $\omega$ Polyclonal Antibody detects endogenous levels of IFN- $\omega$ protein.
Formulation :	Liquid in PBS containing 50% glycerol, 0.5% BSA and 0.02% sodium azide.
Source :	Rabbit
Dilution :	Western Blot: 1/500 - 1/2000. IHC-p: 1/100-1/300. ELISA: 1/20000. Not yet tested in other applications.
Purification :	The antibody was affinity-purified from rabbit antiserum by affinity-chromatography using epitope-specific immunogen.
Concentration :	1 mg/ml
Storage_stability :	-20°C/1 year
Msds :	MSDS_Antibody.pdf
Other_name :	IFNW1; Interferon omega-1; Interferon alpha-II-1
Molecular Weight :	22KD

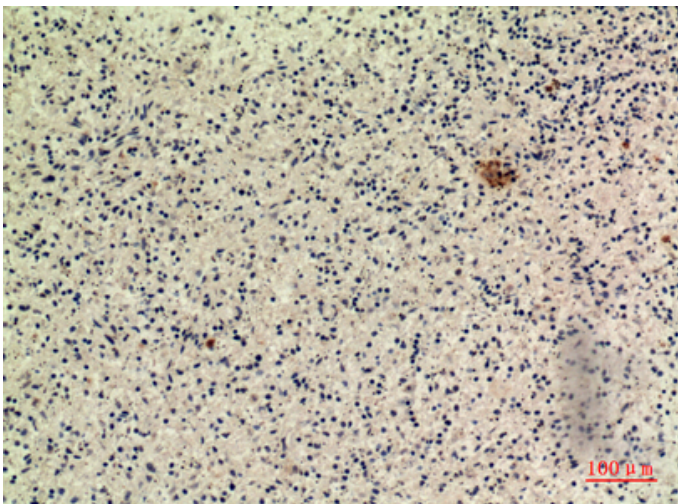
## Product Images



Western Blot analysis of HeLa cells using IFN- $\omega$  Polyclonal Antibody.. Secondary antibody was diluted at 1:20000



Immunohistochemical analysis of paraffin-embedded human-liver, antibody was diluted at 1:100



Immunohistochemical analysis of paraffin-embedded human-spleen, antibody was diluted at 1:100