

## IDH1 Polyclonal Antibody

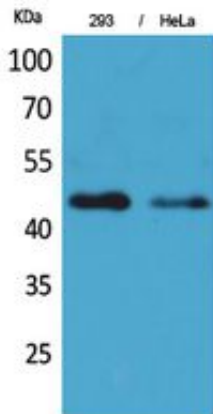
Catalog_no :	<u>AT5416</u>
Applications :	<u>WB,IHC-p,ELISA</u>
Reactivity :	<u>Human,Mouse,Rat</u>
Category :	<u>抗原抗体</u>
Size :	<u>100µg/50µg/20µg</u>
Gene_name :	<u>IDH1</u>
Protein_name :	<u>Isocitrate dehydrogenase [NADP] cytoplasmic</u>
Humangene_id :	<u><a href="#">3417</a></u>
Humanswissprot_no :	<u><a href="#">O75874</a></u>
Mousegene_id :	<u><a href="#">15926</a></u>
Mouseswissprot_no :	<u><a href="#">O88844</a></u>
Ratgene_id :	<u><a href="#">24479</a></u>
Ratswissprot_no :	<u><a href="#">P41562</a></u>
Immunogen :	<u>Synthesized peptide derived from the N-terminal region of human IDH1.</u>
Specificity :	<u>IDH1 Polyclonal Antibody detects endogenous levels of IDH1 protein.</u>
Formulation :	<u>Liquid in PBS containing 50% glycerol, 0.5% BSA and 0.02% sodium azide.</u>
Source :	<u>Rabbit</u>
Dilution :	<u>Western Blot: 1/500 - 1/2000. IHC-p: 1/100-1/300. ELISA: 1/20000. Not yet tested in other applications.</u>
Purification :	<u>The antibody was affinity-purified from rabbit antiserum by affinity-chromatography using epitope-specific immunogen.</u>
Concentration :	<u>1 mg/ml</u>
Storage_stability :	<u>-20°C/1 year</u>
Msds :	<u><a href="#">MSDS_Antibody.pdf</a></u>



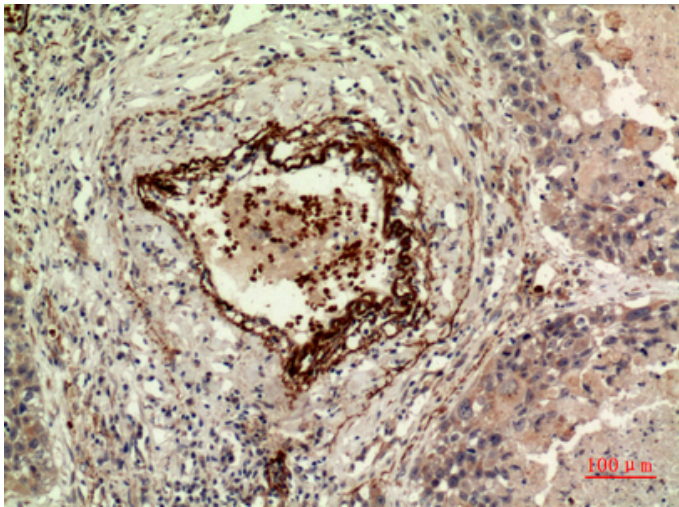
Other\_name : IDH1; PICD; Isocitrate dehydrogenase [NADP] cytoplasmic; IDH; Cytosolic NADP-isocitrate dehydrogenase; IDP; NADP(+)-specific ICDH; Oxalosuccinate decarboxylase

Molecular Weight : 46KD

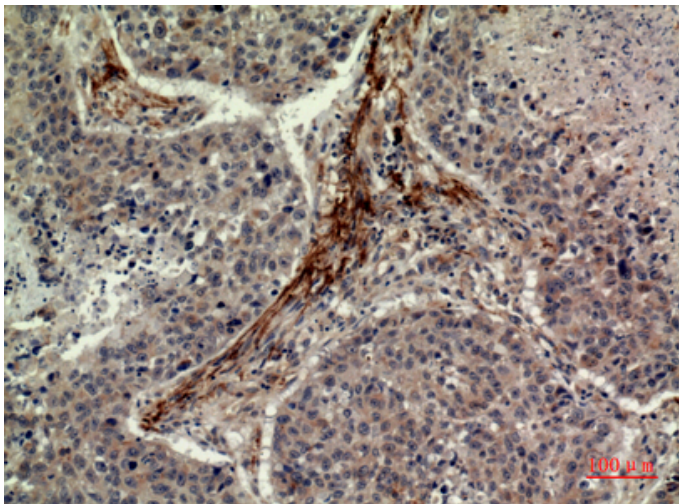
## Product Images



Western Blot analysis of 293, HeLa cells using IDH1 Polyclonal Antibody.. Secondary antibody was diluted at 1:20000

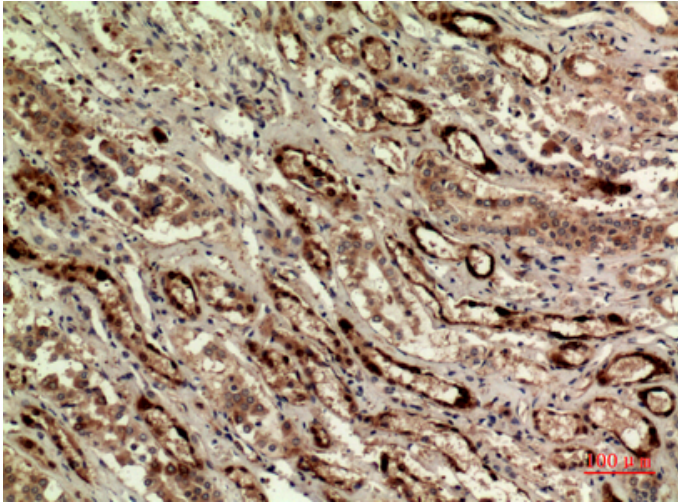


Immunohistochemical analysis of paraffin-embedded human-lung, antibody was diluted at 1:100



Immunohistochemical analysis of paraffin-embedded human-lung, antibody was diluted at 1:100

Immunohistochemical analysis of paraffin-embedded human-kidney, antibody was diluted at 1:100



Immunohistochemical analysis of paraffin-embedded human-kidney, antibody was diluted at 1:100

