



DRA Polyclonal Antibody

Catalog_no :	<u>AT5417</u>
Applications :	<u>WB,ELISA</u>
Reactivity :	<u>Human,Mouse,Rat</u>
Category :	<u>抗原抗体</u>
Size :	<u>100µg/50µg/20µg</u>
Gene_name :	<u>SLC26A3</u>
Protein_name :	<u>Chloride anion exchanger</u>
Humangene_id	<u>1811</u>
:	
Humanswissprot	<u>P40879</u>
_no :	
Mousegene_id :	<u>13487</u>
Mouseswissprot	<u>Q9WVC8</u>
_no :	
Ratgene_id :	<u>114629</u>
Ratswissprot_no	<u>Q924C9</u>
:	
Immunogen :	<u>Synthesized peptide derived from the C-terminal region of human DRA.</u>
Specificity :	<u>DRA Polyclonal Antibody detects endogenous levels of DRA protein.</u>
Formulation :	<u>Liquid in PBS containing 50% glycerol, 0.5% BSA and 0.02% sodium azide.</u>
Source :	<u>Rabbit</u>
Dilution :	<u>Western Blot: 1/500 - 1/2000. ELISA: 1/20000. Not yet tested in other applications.</u>
Purification :	<u>The antibody was affinity-purified from rabbit antiserum by affinity-chromatography using epitope-specific immunogen.</u>
Concentration :	<u>1 mg/ml</u>
Storage_stability	<u>-20°C/1 year</u>
:	
Msds :	<u>MSDS_Antibody.pdf</u>
Other_name :	<u>SLC26A3; DRA; Chloride anion exchanger; Down-regulated in adenoma; Protein DRA;</u>

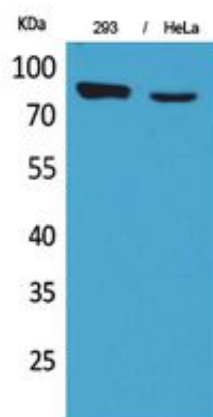


Solute carrier family 26 member 3

Molecular
Weight :

84KD

Product Images



Western Blot analysis of 293, HeLa cells using DRA Polyclonal Antibody.. Secondary antibody was diluted at 1:20000