



## BMAL1 Polyclonal Antibody

Catalog_no :	<u>AT5423</u>
Applications :	<u>WB,IHC-p,ELISA</u>
Reactivity :	<u>Human,Mouse,Rat</u>
Category :	<u>抗原抗体</u>
Size :	<u>100µg/50µg/20µg</u>
Gene_name :	<u>ARNTL</u>
Protein_name :	<u>Aryl hydrocarbon receptor nuclear translocator-like protein 1</u>
Humangene_id	<u><a href="#">406</a></u>
:	<u></u>
Humanswissprot	<u><a href="#">O00327</a></u>
_no :	<u></u>
Mousegene_id :	<u><a href="#">11865</a></u>
Mouseswissprot	<u><a href="#">Q9WTL8</a></u>
_no :	<u></u>
Ratgene_id :	<u><a href="#">29657</a></u>
Ratswissprot_no	<u><a href="#">Q9EPW1</a></u>
:	<u></u>
Immunogen :	<u>The antiserum was produced against synthesized peptide derived from human BMAL1 around the non-acetylation site of Lys538. AA range:501-550</u>
Specificity :	<u>BMAL1 Polyclonal Antibody detects endogenous levels of BMAL1 protein only when acetylation at K538.</u>
Formulation :	<u>Liquid in PBS containing 50% glycerol, 0.5% BSA and 0.02% sodium azide.</u>
Source :	<u>Rabbit</u>
Dilution :	<u>Western Blot: 1/500 - 1/2000. IHC-p: 1/100-1/300. ELISA: 1/20000. Not yet tested in other applications.</u>
Purification :	<u>The antibody was affinity-purified from rabbit antiserum by affinity-chromatography using epitope-specific immunogen.</u>
Concentration :	<u>1 mg/ml</u>
Storage_stability	<u>-20°C/1 year</u>
:	<u></u>

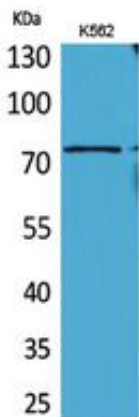


---

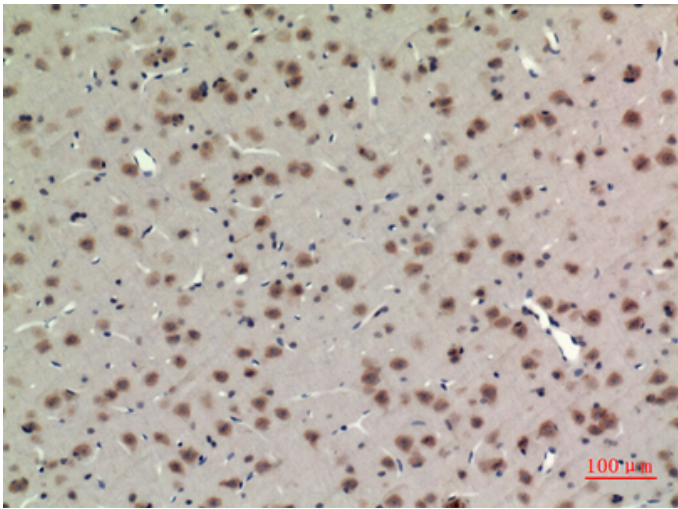
MsdS :	<a href="#">MSDS_Antibody.pdf</a>
Other_name :	ARNTL; BHLHE5; BMAL1; MOP3; PASD3; Aryl hydrocarbon receptor nuclear translocator-like protein 1; Basic-helix-loop-helix-PAS protein MOP3; Brain and muscle ARNT-like 1Class E basic helix-loop-helix protein 5; bHLHe5; Member of PAS protein 3; PAS domain-containing protein 3; bHLH-PAS protein JAP3
Molecular Weight :	69KD

---

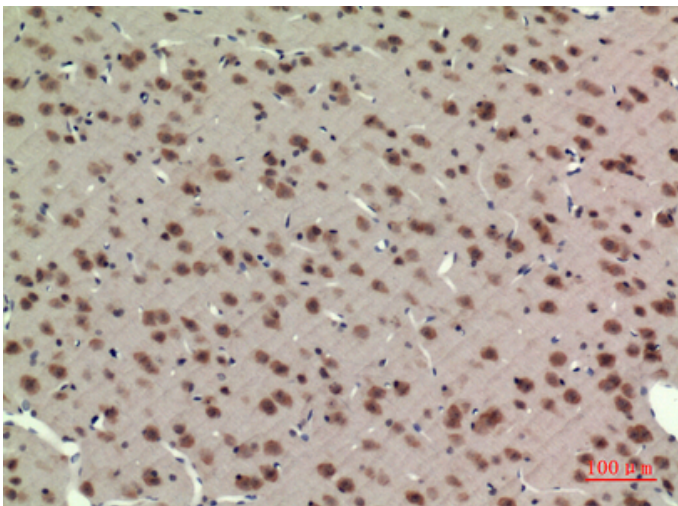
## Product Images



Western Blot analysis of K562 cells using BMAL1 Polyclonal Antibody.. Secondary antibody was diluted at 1:20000 cells nucleus extracted by Minute TM Cytoplasmic and Nuclear Fractionation kit (SC-003, Inventbiotech, MN, USA).



Immunohistochemical analysis of paraffin-embedded rat-brain, antibody was diluted at 1:100



Immunohistochemical analysis of paraffin-embedded rat-brain, antibody was diluted at 1:100

Immunohistochemical analysis of paraffin-embedded rat-brain, antibody was diluted at 1:100

