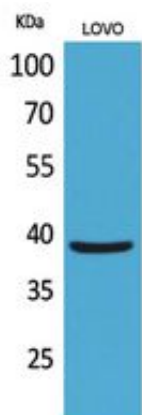


EKLF Polyclonal Antibody

Catalog_no :	AT5425
Applications :	WB,ELISA
Reactivity :	Human
Category :	抗原抗体
Size :	100µg/50µg/20µg
Gene_name :	KLF1
Protein_name :	Krueppel-like factor 1
Humangene_id :	10661
Humanswissprot_no :	Q13351
Immunogen :	The antiserum was produced against synthesized peptide derived from human KLF1 around the non-acetylation site of Lys274. AA range:231-280
Specificity :	EKLF Polyclonal Antibody detects endogenous levels of EKLF protein only when acetylation at K274.
Formulation :	Liquid in PBS containing 50% glycerol, 0.5% BSA and 0.02% sodium azide.
Source :	Rabbit
Dilution :	Western Blot: 1/500 - 1/2000. ELISA: 1/20000. Not yet tested in other applications.
Purification :	The antibody was affinity-purified from rabbit antiserum by affinity-chromatography using epitope-specific immunogen.
Concentration :	1 mg/ml
Storage_stability :	-20°C/1 year
Msds :	MSDS_Antibody.pdf
Other_name :	KLF1; EKLF; Krueppel-like factor 1; Erythroid krueppel-like transcription factor; EKLF
Molecular Weight :	38KD

Product Images



Western Blot analysis of LOVO cells using EKLF Polyclonal Antibody.. Secondary antibody was diluted at 1:20000 cells nucleus extracted by Minute TM Cytoplasmic and Nuclear Fractionation kit (SC-003, Inventbiotech, MN, USA).