

MYH-pan Polyclonal Antibody

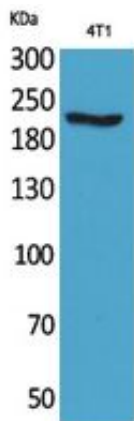
Catalog_no :	<u>AT5427</u>
Applications :	<u>WB,IHC-p,ELISA</u>
Reactivity :	<u>Human,Mouse,Rat</u>
Category :	<u>抗原抗体</u>
Size :	<u>100µg/50µg/20µg</u>
Gene_name :	<u>MYH1/MYH2/MYH3/PTPRJ/MYH6/MYH7/MYH8</u>
Protein_name :	<u>Myosin-1/Myosin-2/Myosin-3/Receptor-type tyrosine-protein phosphatase eta/Myosin-6/Myosin-7/Myosin-8</u>
Humangene_id :	<u>4619/4620/4621/5795/4624/4625/4626</u>
Humanswissprot_no :	<u>P12882/Q9UKX2/P11055/Q9Y623/P13533/P12883/P13535</u>
Mousegene_id :	<u>17879/17883/17884</u>
Ratgene_id :	<u>24583/360543</u>
Ratswissprot_no :	<u>P12847/Q29RW1</u>
Immunogen :	<u>The antiserum was produced against synthesized peptide derived from human MYH-pan around the non-acetylation site of Lys1394. AA range:1351-1400</u>
Specificity :	<u>MYH-pan Polyclonal Antibody detects endogenous levels of MYH-pan protein only when acetylation at K1394.</u>
Formulation :	<u>Liquid in PBS containing 50% glycerol, 0.5% BSA and 0.02% sodium azide.</u>
Source :	<u>Rabbit</u>
Dilution :	<u>Western Blot: 1/500 - 1/2000. IHC-p: 1/100-1/300. ELISA: 1/20000. Not yet tested in other applications.</u>
Purification :	<u>The antibody was affinity-purified from rabbit antiserum by affinity-chromatography using epitope-specific immunogen.</u>
Concentration :	<u>1 mg/ml</u>
Storage_stability :	<u>-20°C/1 year</u>
Msds :	<u>MSDS_Antibody.pdf</u>



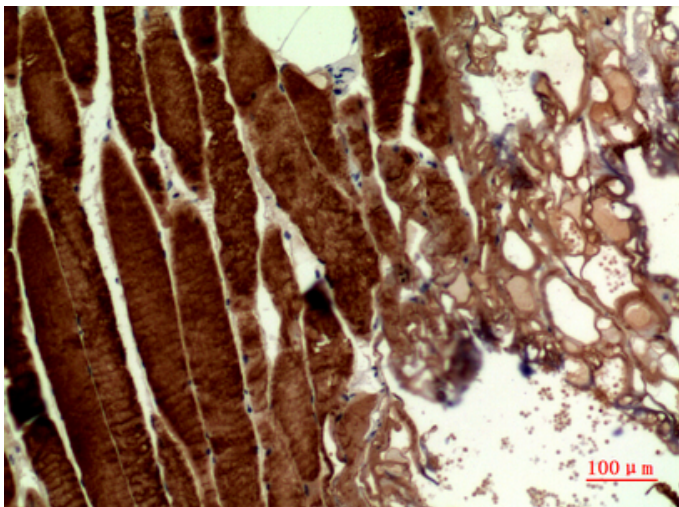
Other_name : MYH1; Myosin-1; Myosin heavy chain 1; Myosin heavy chain 2x; MyHC-2x; Myosin heavy chain IIX/d; MyHC-IIX/d; Myosin heavy chain, skeletal muscle, adult 1; MYH2; MYHSA2; Myosin-2; Myosin heavy chain 2Myosin heavy chain 2; Myosin heavy chain 2a; MyHC-2a; Myosin heavy chain IIA; MyHC-IIa; Myosin heavy chain, skeletal muscle, adult 2; MYH3; Myosin-3; Muscle embryonic myosin heavy chain; Myosin heavy chain 3

Molecular Weight : 225KD

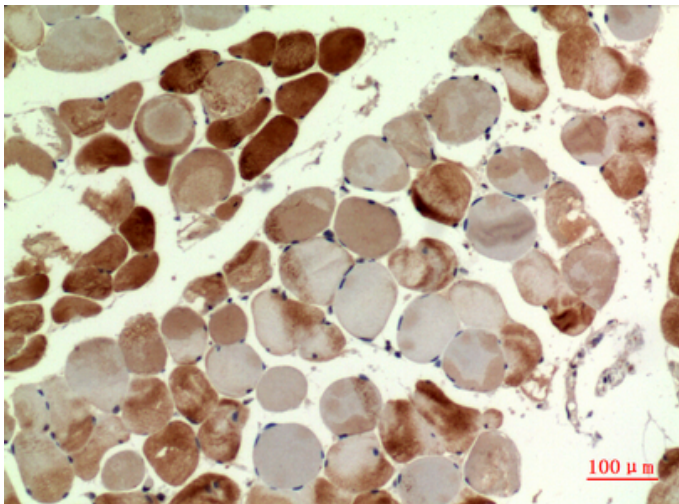
Product Images



Western Blot analysis of 4T1 cells using MYH-pan Polyclonal Antibody.. Secondary antibody was diluted at 1:20000

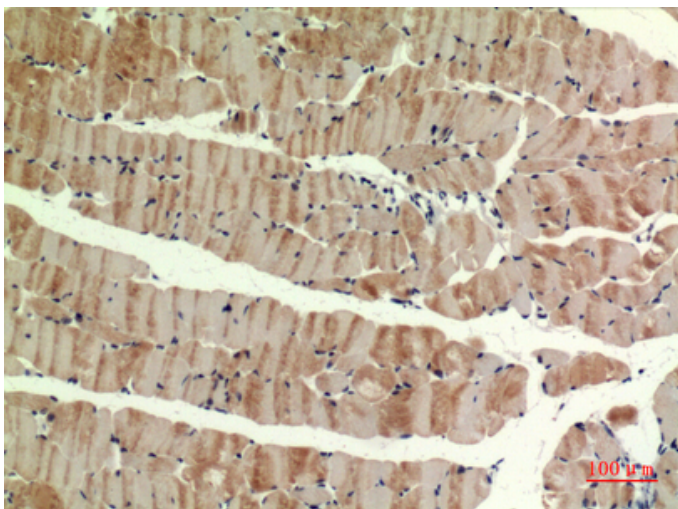
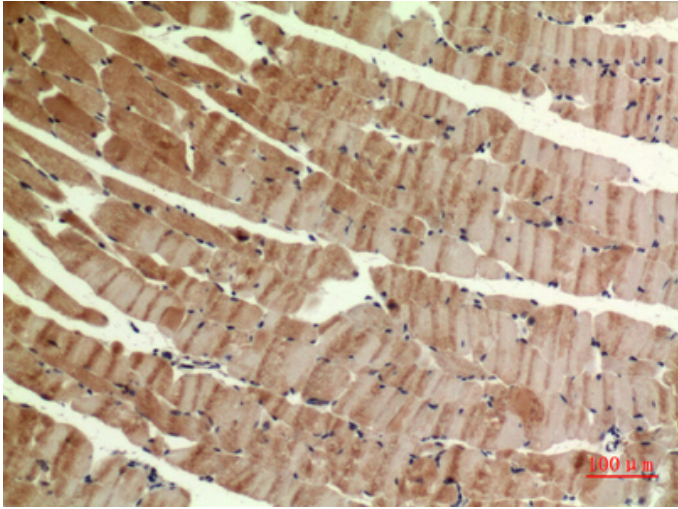


Immunohistochemical analysis of paraffin-embedded human-muscle, antibody was diluted at 1:100



Immunohistochemical analysis of paraffin-embedded human-muscle, antibody was diluted at 1:100

Immunohistochemical analysis of paraffin-embedded mouse-muscle, antibody was diluted at 1:100



Immunohistochemical analysis of paraffin-embedded mouse-muscle, antibody was diluted at 1:100