

Tubulin α Polyclonal Antibody

Catalog_no :	<u>AT5431</u>
Applications :	<u>WB,IHC-p,ELISA</u>
Reactivity :	<u>Human,Mouse,Rat</u>
Category :	<u>抗原抗体</u>
Size :	<u>100μg/50μg/20μg</u>
Gene_name :	<u>TUBA1A/TUBA1B/TUBA1C</u>
Protein_name :	<u>Tubulin alpha-1A chain/Tubulin alpha-1B chain/Tubulin alpha-1C chain</u>
Humangene_id :	<u>7846/10376/84790</u>
Humanswissprot_no :	<u>Q71U36/P68363/Q9BQE3</u>
Mousegene_id :	<u>22142/22143/22146</u>
Ratgene_id :	<u>64158/500929/100909441</u>
Ratswissprot_no :	<u>P68370/Q6P9V9/Q6AYZ1</u>
Immunogen :	<u>Synthesized peptide derived from human Tubulin α around the non-acetylation site of K112.</u>
Specificity :	<u>Tubulin α Polyclonal Antibody detects endogenous levels of Tubulin α protein only when acetylation at K112.</u>
Formulation :	<u>Liquid in PBS containing 50% glycerol, 0.5% BSA and 0.02% sodium azide.</u>
Source :	<u>Rabbit</u>
Dilution :	<u>Western Blot: 1/500 - 1/2000. IHC-p: 1/100-1/300. ELISA: 1/20000. Not yet tested in other applications.</u>
Purification :	<u>The antibody was affinity-purified from rabbit antiserum by affinity-chromatography using epitope-specific immunogen.</u>
Concentration :	<u>1 mg/ml</u>
Storage_stability :	<u>-20°C/1 year</u>
Msds :	<u>MSDS_Antibody.pdf</u>
Other_name :	<u>TUBA1A; TUBA3; Tubulin alpha-1A chain; Alpha-tubulin 3; Tubulin B-alpha-1; Tubulin</u>

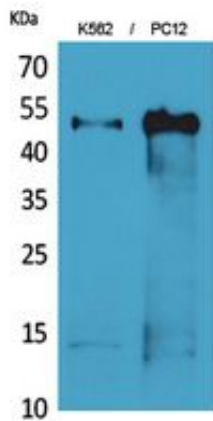


alpha-3 chain; TUBA1B; Tubulin alpha-1B chain; Alpha-tubulin ubiquitousTubulin K-alpha-1; Tubulin alpha-ubiquitous chain; TUBA1C; TUBA6; Tubulin alpha-1C chain; Alpha-tubulin 6; Tubulin alpha-6 chain

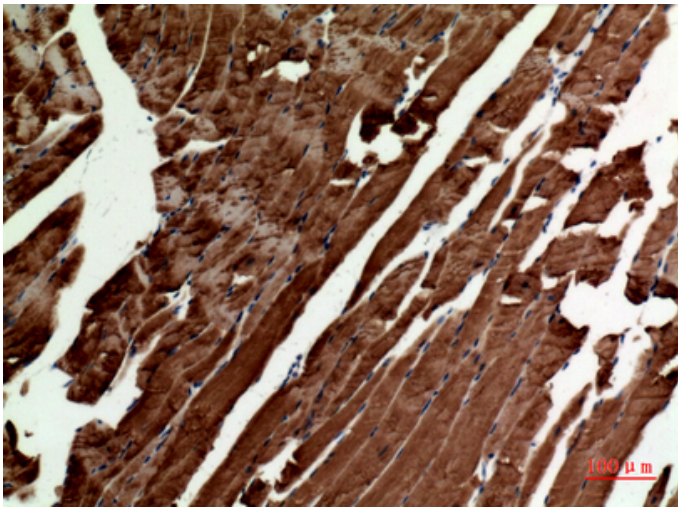
Molecular
Weight :

50KD

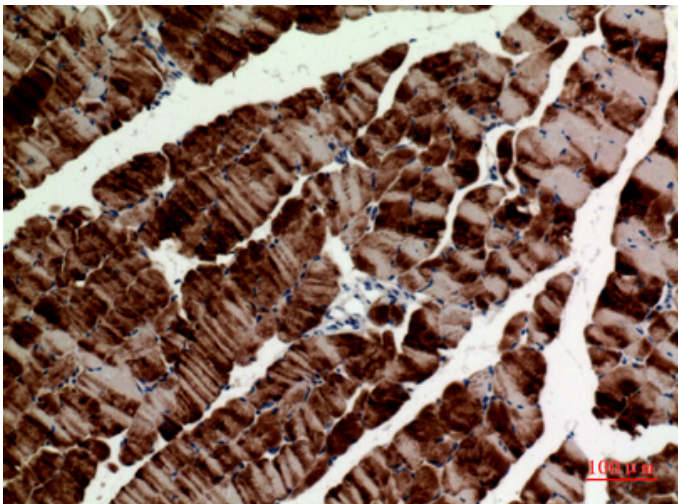
Product Images



Western Blot analysis of K562, PC12 cells using Tubulin α Polyclonal Antibody.. Secondary antibody was diluted at 1:20000



Immunohistochemical analysis of paraffin-embedded mouse-muscle, antibody was diluted at 1:100



Immunohistochemical analysis of paraffin-embedded mouse-muscle, antibody was diluted at 1:100