



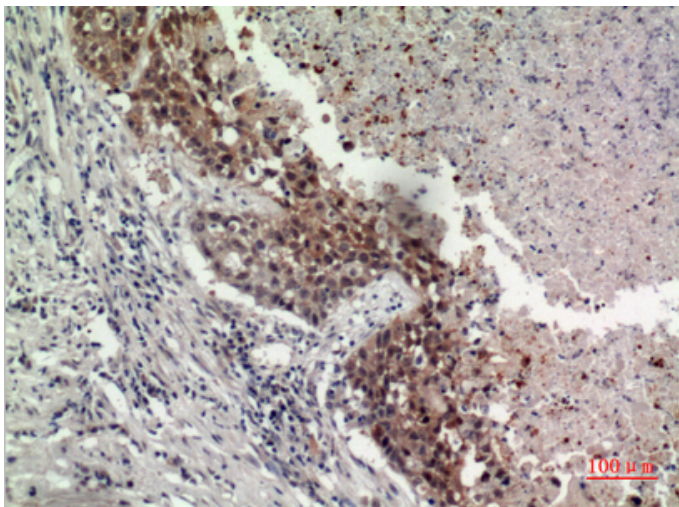
GPR87/95 Polyclonal Antibody

Catalog_no :	AT5438
Applications :	WB,IHC-p,ELISA
Reactivity :	Human
Category :	抗原抗体
Size :	100µg/50µg/20µg
Gene_name :	GPR87
Protein_name :	G-protein coupled receptor 87
Humangene_id :	53836
Humanswissprot_no :	Q9BY21
Immunogen :	The antiserum was produced against synthesized peptide derived from the N-terminal region of human GPR87. AA range:1-50
Specificity :	GPR87/95 Polyclonal Antibody detects endogenous levels of GPR87/95 protein.
Formulation :	Liquid in PBS containing 50% glycerol, 0.5% BSA and 0.02% sodium azide.
Source :	Rabbit
Dilution :	Western Blot: 1/500 - 1/2000. IHC-p: 1/100-1/300. ELISA: 1/20000. Not yet tested in other applications.
Purification :	The antibody was affinity-purified from rabbit antiserum by affinity-chromatography using epitope-specific immunogen.
Concentration :	1 mg/ml
Storage_stability :	-20°C/1 year
Msds :	MSDS_Antibody.pdf
Other_name :	GPR87; GPR95; FKSG78; G-protein coupled receptor 87; G-protein coupled receptor 95
Molecular Weight :	42KD

Product Images



Western Blot analysis of K562 cells using GPR87/95 Polyclonal Antibody.. Secondary antibody was diluted at 1:20000



Immunohistochemical analysis of paraffin-embedded human-lung, antibody was diluted at 1:100