



## ApoA-I Polyclonal Antibody

Catalog_no :	<u>AT5439</u>
Applications :	<u>WB,IHC-p,ELISA</u>
Reactivity :	<u>Human,Mouse</u>
Category :	<u>抗原抗体</u>
Size :	<u>100µg/50µg/20µg</u>
Gene_name :	<u>APOA1</u>
Protein_name :	<u>Apolipoprotein A-I</u>
Humangene_id :	<u><a href="#">335</a></u>
Humanswissprot_no :	<u><a href="#">P02647</a></u>
Mousegene_id :	<u><a href="#">11806</a></u>
Mouseswissprot_no :	<u><a href="#">Q00623</a></u>
Immunogen :	<u>The antiserum was produced against synthesized peptide derived from the Internal region of human APOA1. AA range:81-130</u>
Specificity :	<u>ApoA-I Polyclonal Antibody detects endogenous levels of ApoA-I protein.</u>
Formulation :	<u>Liquid in PBS containing 50% glycerol, 0.5% BSA and 0.02% sodium azide.</u>
Source :	<u>Rabbit</u>
Dilution :	<u>Western Blot: 1/500 - 1/2000. IHC-p: 1/100-1/300. ELISA: 1/20000. Not yet tested in other applications.</u>
Purification :	<u>The antibody was affinity-purified from rabbit antiserum by affinity-chromatography using epitope-specific immunogen.</u>
Concentration :	<u>1 mg/ml</u>
Storage_stability :	<u>-20°C/1 year</u>
Msds :	<u><a href="#">MSDS_Antibody.pdf</a></u>
Other_name :	<u>APOA1; Apolipoprotein A-I; Apo-AI; ApoA-I; Apolipoprotein A1</u>
Molecular Weight :	<u>31KD</u>

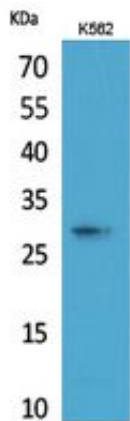


**专注二抗产品**

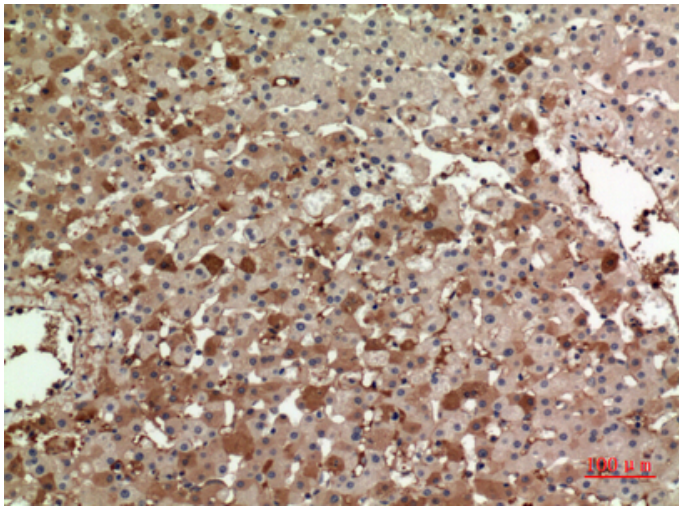
Biodragon旗下品牌

---

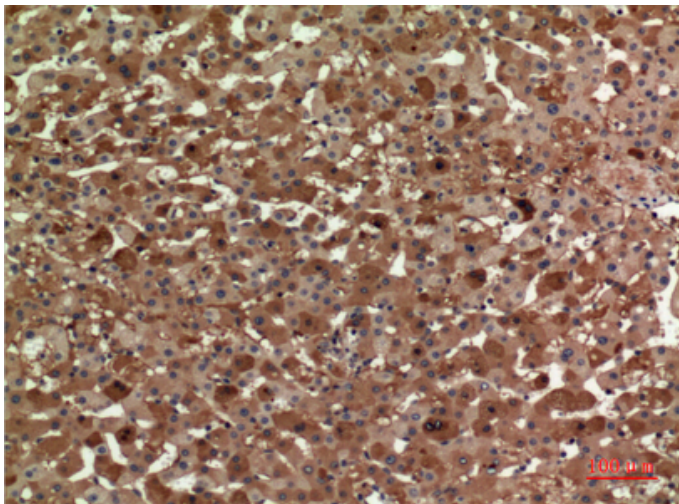
## Product Images



Western Blot analysis of K562 cells using ApoA-I Polyclonal Antibody.. Secondary antibody was diluted at 1:20000

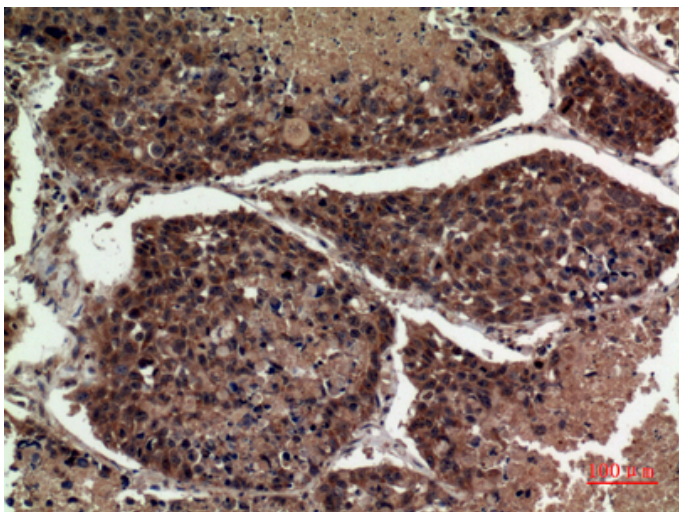
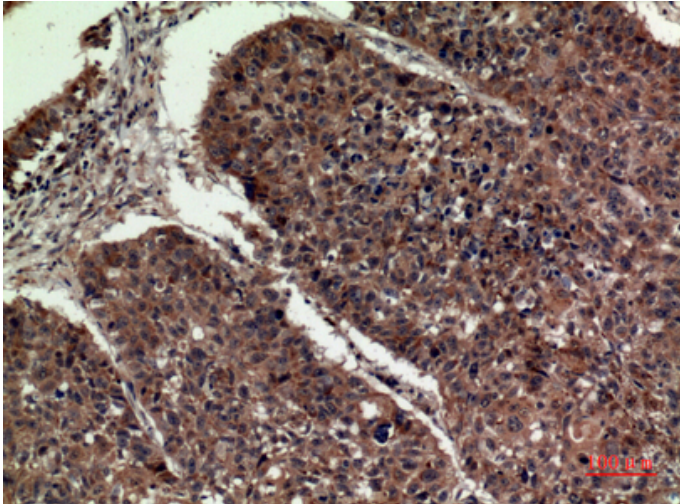


Immunohistochemical analysis of paraffin-embedded human-liver, antibody was diluted at 1:100



Immunohistochemical analysis of paraffin-embedded human-liver, antibody was diluted at 1:100

Immunohistochemical analysis of paraffin-embedded human-lung, antibody was diluted at 1:100



Immunohistochemical analysis of paraffin-embedded human-lung, antibody was diluted at 1:100