

Syntaxin 1 Polyclonal Antibody

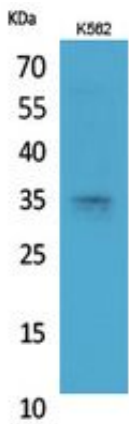
Catalog_no :	AT5440
Applications :	WB,IHC-p,ELISA
Reactivity :	Human,Mouse,Rat
Category :	抗原抗体
Size :	100µg/50µg/20µg
Gene_name :	STX1A
Protein_name :	Syntaxin-1A
Humangene_id :	6804
Humanswissprot_no :	Q16623
Mousegene_id :	20907
Mouseswissprot_no :	O35526
Ratgene_id :	116470
Ratswissprot_no :	P32851
Immunogen :	The antiserum was produced against synthesized peptide derived from the Internal region of human STX1A. AA range:31-80
Specificity :	Syntaxin 1 Polyclonal Antibody detects endogenous levels of Syntaxin 1 protein.
Formulation :	Liquid in PBS containing 50% glycerol, 0.5% BSA and 0.02% sodium azide.
Source :	Rabbit
Dilution :	Western Blot: 1/500 - 1/2000. IHC-p: 1/100-1/300. ELISA: 1/20000. Not yet tested in other applications.
Purification :	The antibody was affinity-purified from rabbit antiserum by affinity-chromatography using epitope-specific immunogen.
Concentration :	1 mg/ml
Storage_stability :	-20°C/1 year
Msds :	MSDS_Antibody.pdf



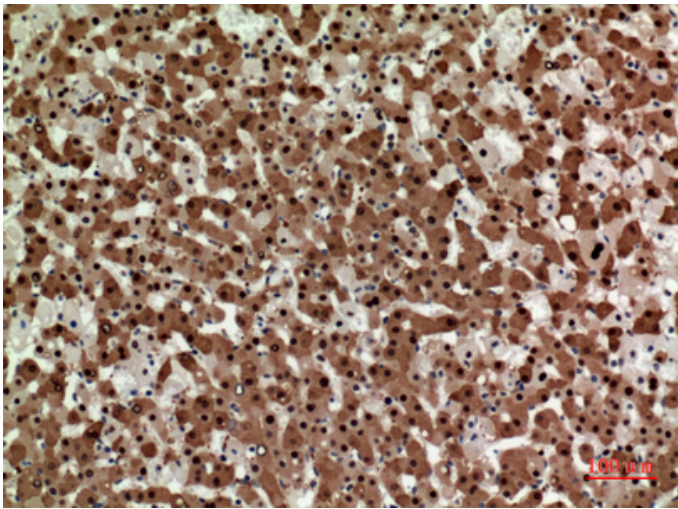
Other_name : STX1A; STX1; Syntaxin-1A; Neuron-specific antigen HPC-1

Molecular Weight : 30KD

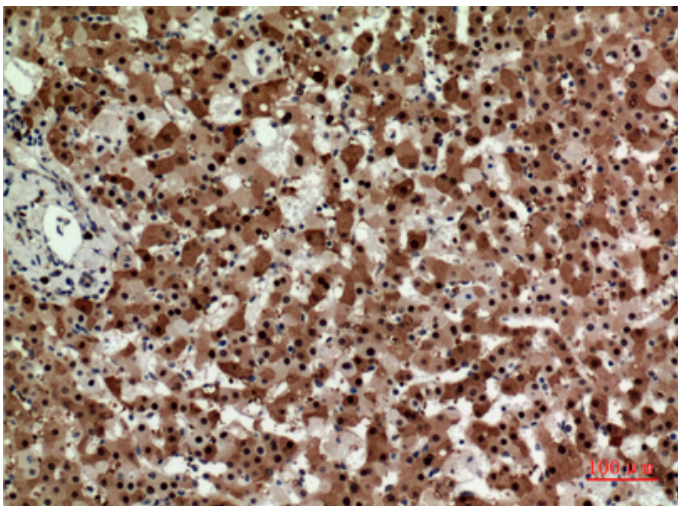
Product Images



Western Blot analysis of K562 cells using Syntaxin 1 Polyclonal Antibody.. Secondary antibody was diluted at 1:20000

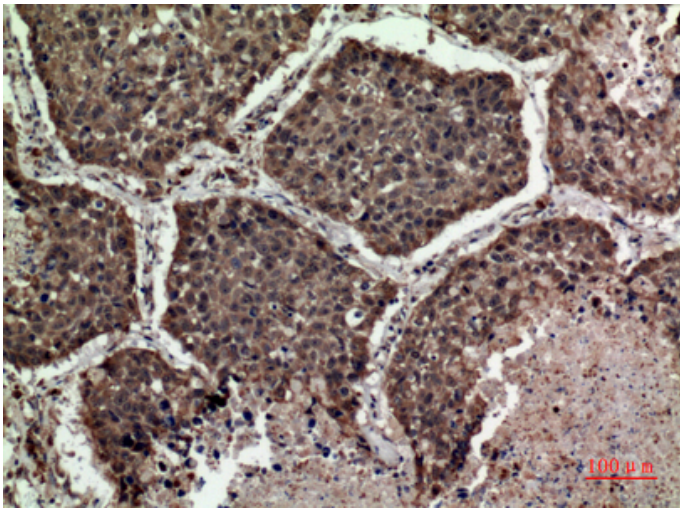
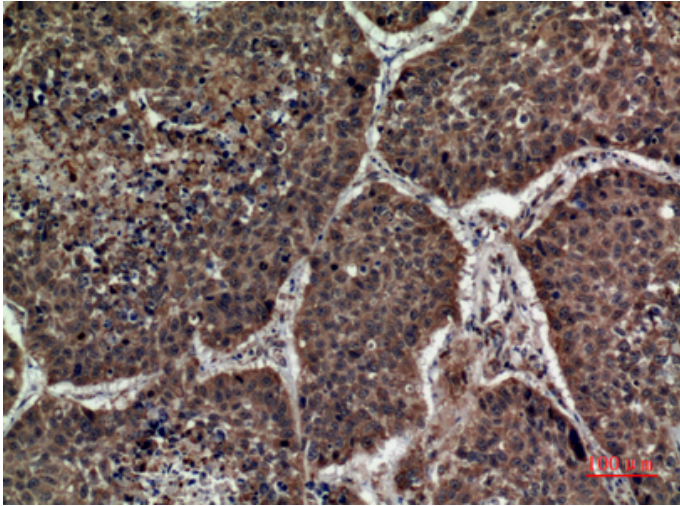


Immunohistochemical analysis of paraffin-embedded human-liver, antibody was diluted at 1:100



Immunohistochemical analysis of paraffin-embedded human-liver, antibody was diluted at 1:100

Immunohistochemical analysis of paraffin-embedded human-lung, antibody was diluted at 1:100



Immunohistochemical analysis of paraffin-embedded human-lung, antibody was diluted at 1:100