

Eotaxin Polyclonal Antibody

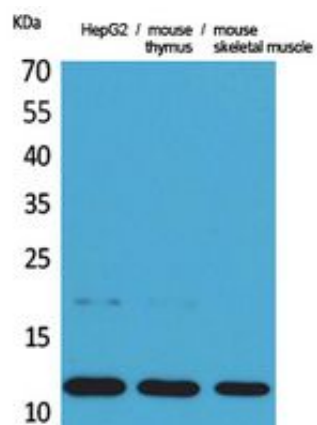
Catalog_no :	<u>AT5444</u>
Applications :	<u>WB,ELISA</u>
Reactivity :	<u>Human,Mouse,Rat</u>
Category :	<u>抗原抗体</u>
Size :	<u>100µg/50µg/20µg</u>
Gene_name :	<u>CCL11</u>
Protein_name :	<u>Eotaxin</u>
Humangene_id :	<u>6356</u>
Humanswissprot_no :	<u>P51671</u>
Mousegene_id :	<u>20292</u>
Mouseswissprot_no :	<u>P48298</u>
Ratgene_id :	<u>29397</u>
Ratswissprot_no :	<u>P97545</u>
Immunogen :	<u>The antiserum was produced against synthesized peptide derived from the Internal region of human CCL11. AA range:41-90</u>
Specificity :	<u>Eotaxin Polyclonal Antibody detects endogenous levels of Eotaxin protein.</u>
Formulation :	<u>Liquid in PBS containing 50% glycerol, 0.5% BSA and 0.02% sodium azide.</u>
Source :	<u>Rabbit</u>
Dilution :	<u>Western Blot: 1/500 - 1/2000. ELISA: 1/20000. Not yet tested in other applications.</u>
Purification :	<u>The antibody was affinity-purified from rabbit antiserum by affinity-chromatography using epitope-specific immunogen.</u>
Concentration :	<u>1 mg/ml</u>
Storage_stability :	<u>-20°C/1 year</u>
Msds :	<u>MSDS_Antibody.pdf</u>



Other_name : CCL11; SCYA11; Eotaxin; C-C motif chemokine 11; Eosinophil chemotactic protein; Small-inducible cytokine A11

Molecular Weight : 11KD

Product Images



Western Blot analysis of HepG2, mouse thymus, mouse skeletal muscle cells using Eotaxin Polyclonal Antibody.. Secondary antibody was diluted at 1:20000