

MAPK Organizer 1 Polyclonal Antibody

Catalog_no :	AT5445
Applications :	WB,IHC-p,ELISA
Reactivity :	Human,Mouse,Rat
Category :	抗原抗体
Size :	100µg/50µg/20µg
Gene_name :	WDR83
Protein_name :	WD repeat domain-containing protein 83
Humangene_id :	84292
Humanswissprot_no :	Q9BRX9
Mousegene_id :	67836
Mouseswissprot_no :	Q9DAJ4
Ratgene_id :	288924
Ratswissprot_no :	Q5BLX8
Immunogen :	The antiserum was produced against synthesized peptide derived from the Internal region of human WDR83. AA range:141-190
Specificity :	MAPK Organizer 1 Polyclonal Antibody detects endogenous levels of MAPK Organizer 1 protein.
Formulation :	Liquid in PBS containing 50% glycerol, 0.5% BSA and 0.02% sodium azide.
Source :	Rabbit
Dilution :	Western Blot: 1/500 - 1/2000. IHC-p: 1/100-1/300. ELISA: 1/20000. Not yet tested in other applications.
Purification :	The antibody was affinity-purified from rabbit antiserum by affinity-chromatography using epitope-specific immunogen.
Concentration :	1 mg/ml
Storage_stability :	-20°C/1 year

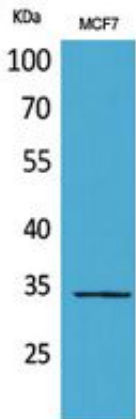


MsdS : MSDS_Antibody.pdf

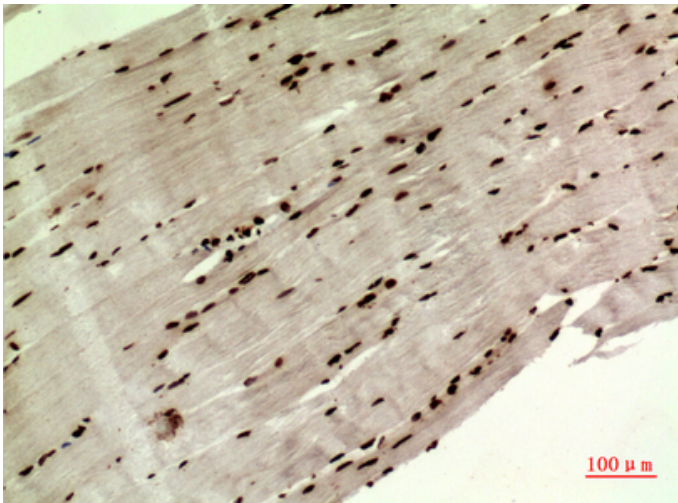
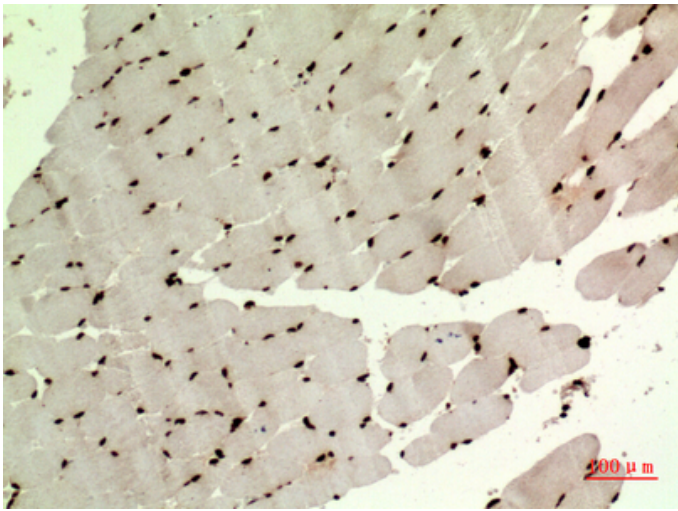
Other_name : WDR83; MORG1; WD repeat domain-containing protein 83; Mitogen-activated protein kinase organizer 1; MAPK organizer 1

Molecular Weight : 34KD

Product Images

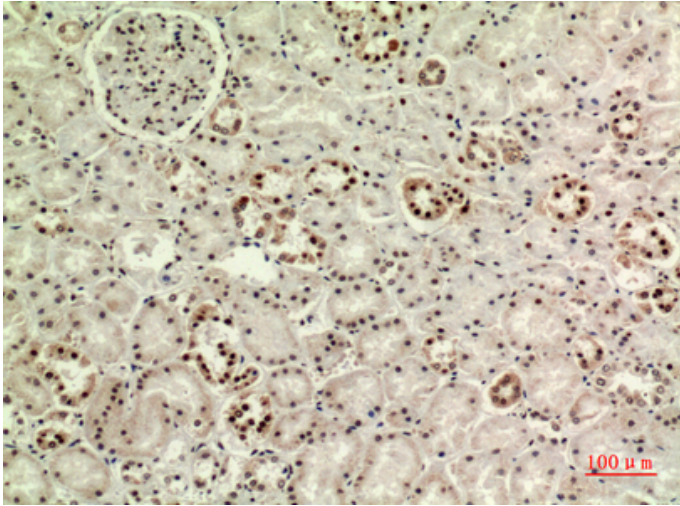


Western Blot analysis of MCF7 cells using MAPK Organizer 1 Polyclonal Antibody.. Secondary antibody was diluted at 1:20000

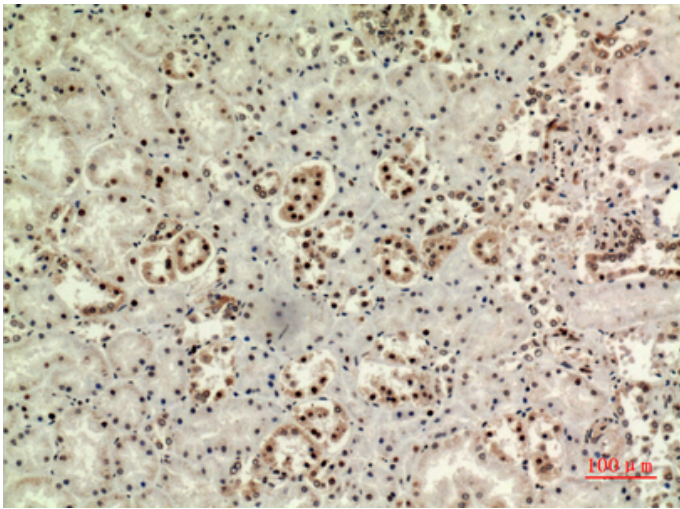


Immunohistochemical analysis of paraffin-embedded human-muscle, antibody was diluted at 1:100

Immunohistochemical analysis of paraffin-embedded human-kidney, antibody was diluted at 1:100



Immunohistochemical analysis of paraffin-embedded human-kidney, antibody was diluted at 1:100



Immunohistochemical analysis of paraffin-embedded human-kidney, antibody was diluted at 1:100

