

## FOXP3 Polyclonal Antibody

|                     |  |
|---------------------|--|
| Catalog_no :        | AT5446   |
| Applications :      | WB,IHC-p,ELISA   |
| Reactivity :        | Human,Mouse,Rat  |
| Category :          | 抗原抗体   |
| Size :              | 100µg/50µg/20µg  |
| Gene_name :         | FOXP3  |
| Protein_name :      | Forkhead box protein P3  |
| Humangene_id :      | <a href="#">50943</a>  |
| Humanswissprot_no : | <a href="#">Q9BZS1</a>   |
| Mousegene_id :      | <a href="#">20371</a>  |
| Mouseswissprot_no : | <a href="#">Q99JB6</a>   |
| Immunogen :         | The antiserum was produced against synthesized peptide derived from the C-terminal region of human FOXP3. AA range:381-430 |
| Specificity :       | FOXP3 Polyclonal Antibody detects endogenous levels of FOXP3 protein.  |
| Formulation :       | Liquid in PBS containing 50% glycerol, 0.5% BSA and 0.02% sodium azide.  |
| Source :            | Rabbit   |
| Dilution :          | Western Blot: 1/500 - 1/2000. IHC-p: 1/100-1/300. ELISA: 1/20000. Not yet tested in other applications.                    |
| Purification :      | The antibody was affinity-purified from rabbit antiserum by affinity-chromatography using epitope-specific immunogen.      |
| Concentration :     | 1 mg/ml  |
| Storage_stability : | -20°C/1 year   |
| Msds :              | <a href="#">MSDS_Antibody.pdf</a>  |
| Other_name :        | FOXP3; IPEX; JM2; Forkhead box protein P3; Scurfin   |
| Molecular Weight :  | 47KD   |

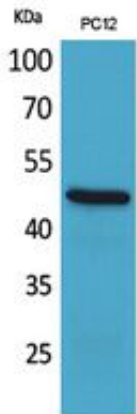


**专注二抗产品**

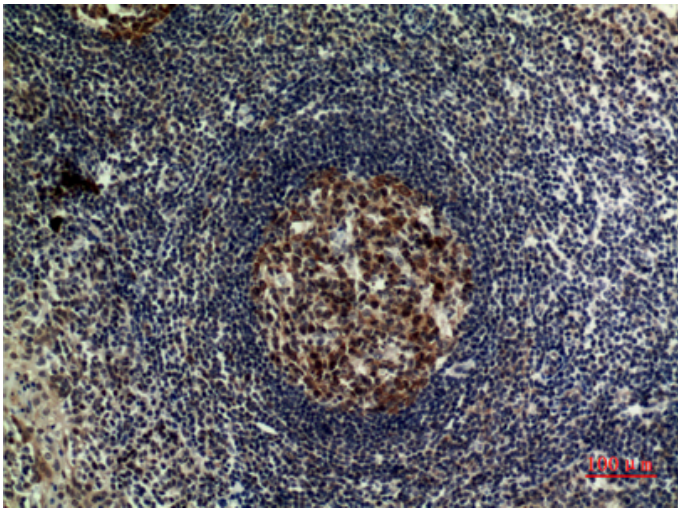
Biodragon旗下品牌

---

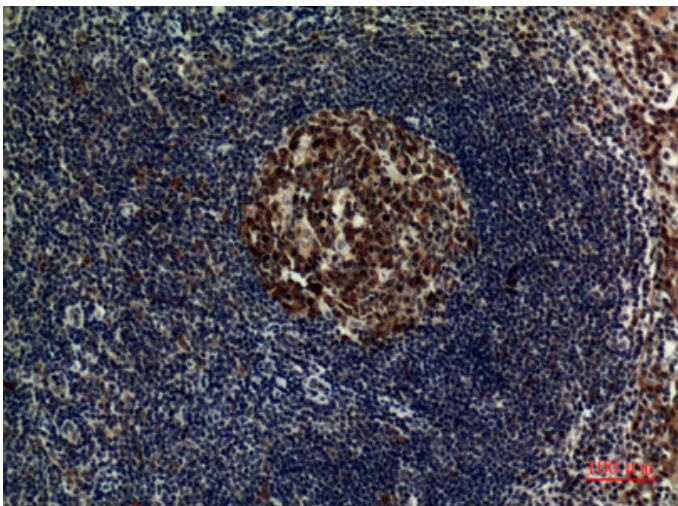
## Product Images



Western Blot analysis of PC12 cells using FOXP3 Polyclonal Antibody.. Secondary antibody was diluted at 1:20000

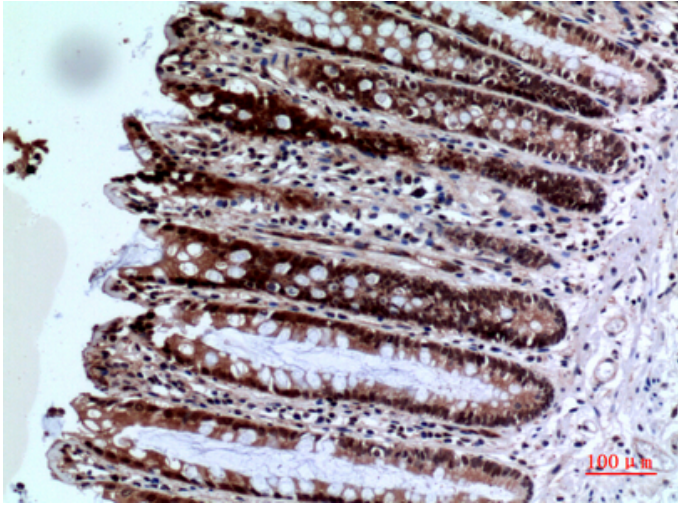


Immunohistochemical analysis of paraffin-embedded human-tonsilla, antibody was diluted at 1:100

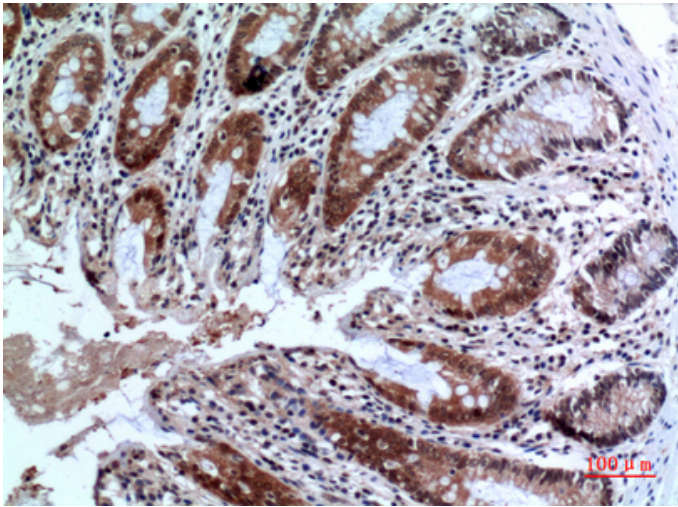


Immunohistochemical analysis of paraffin-embedded human-tonsilla, antibody was diluted at 1:100

Immunohistochemical analysis of paraffin-embedded human-colon, antibody was diluted at 1:100



Immunohistochemical analysis of paraffin-embedded human-colon, antibody was diluted at 1:100



Immunohistochemical analysis of paraffin-embedded human-colon, antibody was diluted at 1:100

