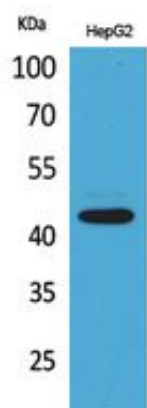


EP1 Polyclonal Antibody

Catalog_no :	AT5447
Applications :	WB,ELISA
Reactivity :	Human
Category :	抗原抗体
Size :	100µg/50µg/20µg
Gene_name :	PTGER1
Protein_name :	Prostaglandin E2 receptor EP1 subtype
Humangene_id :	5731
Humanswissprot_no :	P34995
Immunogen :	The antiserum was produced against synthesized peptide derived from the Internal region of human PTGER1. AA range:191-240
Specificity :	EP1 Polyclonal Antibody detects endogenous levels of EP1 protein.
Formulation :	Liquid in PBS containing 50% glycerol, 0.5% BSA and 0.02% sodium azide.
Source :	Rabbit
Dilution :	Western Blot: 1/500 - 1/2000. ELISA: 1/20000. Not yet tested in other applications.
Purification :	The antibody was affinity-purified from rabbit antiserum by affinity-chromatography using epitope-specific immunogen.
Concentration :	1 mg/ml
Storage_stability :	-20°C/1 year
Msds :	MSDS_Antibody.pdf
Other_name :	PTGER1; Prostaglandin E2 receptor EP1 subtype; PGE receptor EP1 subtype; PGE2 receptor EP1 subtype; Prostanoid EP1 receptor
Molecular Weight :	44KD

Product Images



Western Blot analysis of HepG2 cells using EP1 Polyclonal Antibody.. Secondary antibody was diluted at 1:20000