

## Neuropilin Polyclonal Antibody

Catalog_no :	<u>AT5452</u>
Applications :	<u>WB,IHC-p,ELISA</u>
Reactivity :	<u>Human,Mouse,Rat</u>
Category :	<u>抗原抗体</u>
Size :	<u>100µg/50µg/20µg</u>
Gene_name :	<u>NRP1</u>
Protein_name :	<u>Neuropilin-1</u>
Humangene_id :	<u><a href="#">8829</a></u>
Humanswissprot_no :	<u><a href="#">O14786</a></u>
Mousegene_id :	<u><a href="#">18186</a></u>
Mouseswissprot_no :	<u><a href="#">P97333</a></u>
Ratgene_id :	<u><a href="#">246331</a></u>
Ratswissprot_no :	<u><a href="#">Q9QWJ9</a></u>
Immunogen :	<u>The antiserum was produced against synthesized peptide derived from the Internal region of human NRP1. AA range:321-370</u>
Specificity :	<u>Neuropilin Polyclonal Antibody detects endogenous levels of Neuropilin protein.</u>
Formulation :	<u>Liquid in PBS containing 50% glycerol, 0.5% BSA and 0.02% sodium azide.</u>
Source :	<u>Rabbit</u>
Dilution :	<u>Western Blot: 1/500 - 1/2000. IHC-p: 1/100-1/300. ELISA: 1/20000. Not yet tested in other applications.</u>
Purification :	<u>The antibody was affinity-purified from rabbit antiserum by affinity-chromatography using epitope-specific immunogen.</u>
Concentration :	<u>1 mg/ml</u>
Storage_stability :	<u>-20°C/1 year</u>
Msds :	<u>MSDS_Antibody.pdf</u>



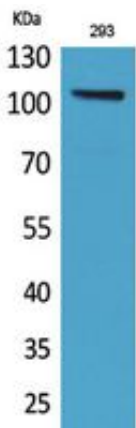
Other\_name : NRP1; NRP; VEGF165R; Neuropilin-1; Vascular endothelial cell growth factor 165 receptor; CD304

---

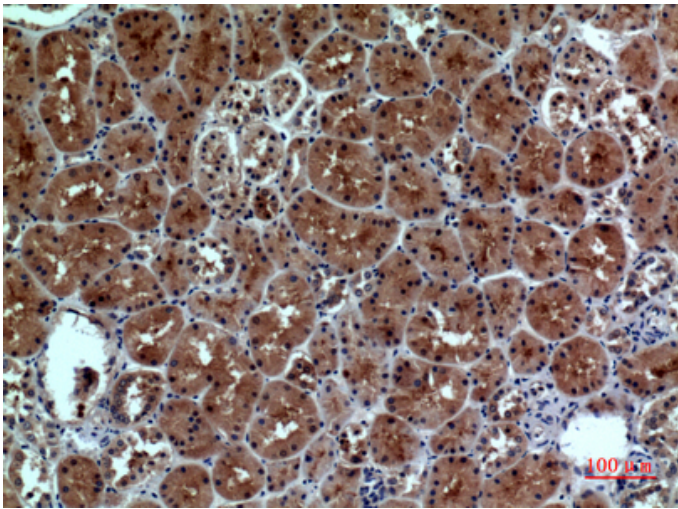
Molecular Weight : 100KD

---

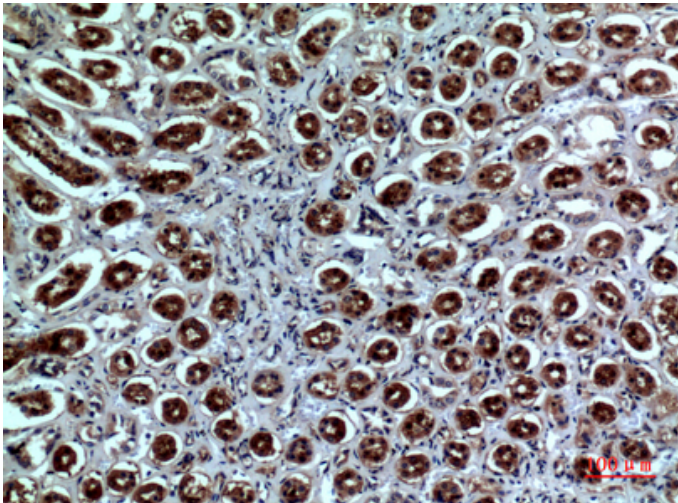
## Product Images



Western Blot analysis of 293 cells using Neuropilin Polyclonal Antibody.. Secondary antibody was diluted at 1:20000



Immunohistochemical analysis of paraffin-embedded human-kidney, antibody was diluted at 1:100



Immunohistochemical analysis of paraffin-embedded human-kidney, antibody was diluted at 1:100