



MCM6 Polyclonal Antibody

Catalog_no :	<u>AT5454</u>
Applications :	<u>WB,ELISA</u>
Reactivity :	<u>Human,Mouse,Rat</u>
Category :	<u>抗原抗体</u>
Size :	<u>100µg/50µg/20µg</u>
Gene_name :	<u>MCM6</u>
Protein_name :	<u>DNA replication licensing factor MCM6</u>
Humangene_id	<u>4175</u>
:	
Humanswissprot	<u>Q14566</u>
_no :	
Mousegene_id :	<u>17219</u>
Mouseswissprot	<u>P97311</u>
_no :	
Ratswissprot_no	<u>Q62724</u>
:	
Immunogen :	<u>The antiserum was produced against synthesized peptide derived from the Internal region of human MCM6. AA range:331-380</u>
Specificity :	<u>MCM6 Polyclonal Antibody detects endogenous levels of MCM6 protein.</u>
Formulation :	<u>Liquid in PBS containing 50% glycerol, 0.5% BSA and 0.02% sodium azide.</u>
Source :	<u>Rabbit</u>
Dilution :	<u>Western Blot: 1/500 - 1/2000. ELISA: 1/20000. Not yet tested in other applications.</u>
Purification :	<u>The antibody was affinity-purified from rabbit antiserum by affinity-chromatography using epitope-specific immunogen.</u>
Concentration :	<u>1 mg/ml</u>
Storage_stability	<u>-20°C/1 year</u>
:	
Msds :	<u>MSDS_Antibody.pdf</u>
Other_name :	<u>MCM6; DNA replication licensing factor MCM6; p105MCM</u>

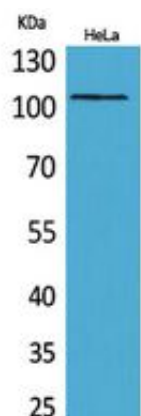


Molecular
Weight :

90KD



Product Images



Western Blot analysis of HeLa cells using MCM6 Polyclonal Antibody .. Secondary antibody was diluted at 1:20000 cells nucleus extracted by Minute TM Cytoplasmic and Nuclear Fractionation kit (SC-003, Inventbiotech, MN, USA).