

Rab 5A Polyclonal Antibody

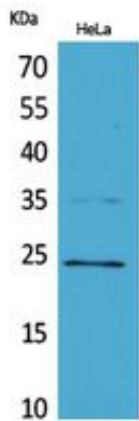
Catalog_no :	AT5456
Applications :	WB,IHC-p,ELISA
Reactivity :	Human,Mouse,Rat
Category :	抗原抗体
Size :	100µg/50µg/20µg
Gene_name :	RAB5A
Protein_name :	Ras-related protein Rab-5A
Humangene_id :	5868
Humanswissprot_no :	P20339
Mousegene_id :	271457
Mouseswissprot_no :	Q9CQD1
Immunogen :	The antiserum was produced against synthesized peptide derived from the Internal region of human RAB5A. AA range:71-120
Specificity :	Rab 5A Polyclonal Antibody detects endogenous levels of Rab 5A protein.
Formulation :	Liquid in PBS containing 50% glycerol, 0.5% BSA and 0.02% sodium azide.
Source :	Rabbit
Dilution :	Western Blot: 1/500 - 1/2000. IHC-p: 1/100-1/300. ELISA: 1/20000. Not yet tested in other applications.
Purification :	The antibody was affinity-purified from rabbit antiserum by affinity-chromatography using epitope-specific immunogen.
Concentration :	1 mg/ml
Storage_stability :	-20°C/1 year
Msds :	MSDS_Antibody.pdf
Other_name :	RAB5A; RAB5; Ras-related protein Rab-5A
Molecular Weight :	24KD



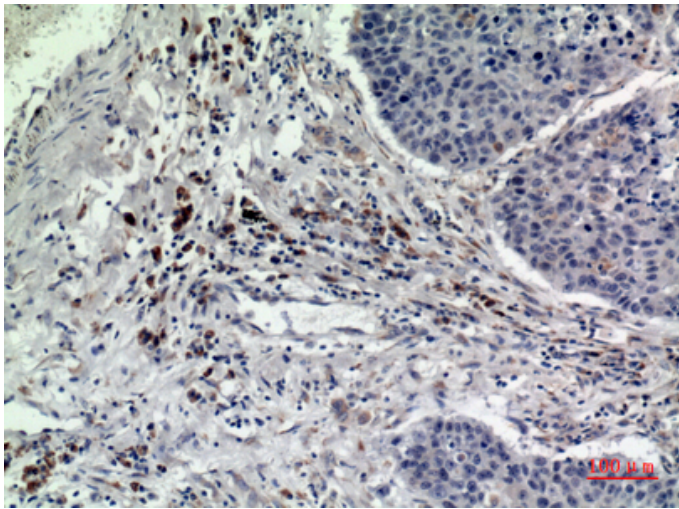
专注二抗产品

Biodragon旗下品牌

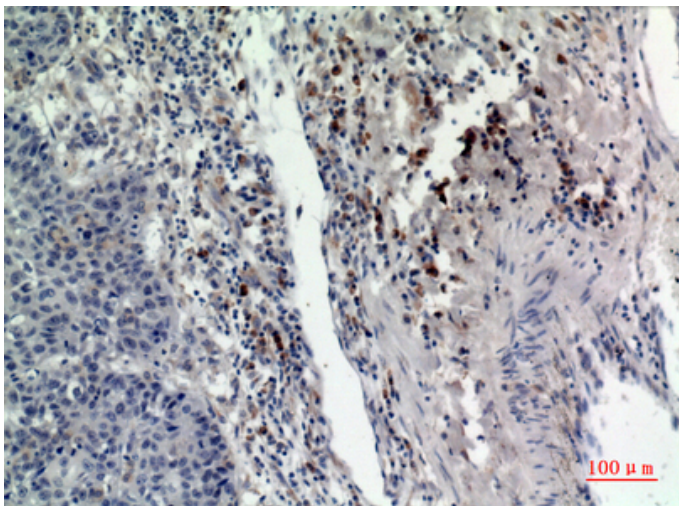
Product Images



Western Blot analysis of HeLa cells using Rab 5A Polyclonal Antibody.. Secondary antibody was diluted at 1:20000



Immunohistochemical analysis of paraffin-embedded human-lung, antibody was diluted at 1:100



Immunohistochemical analysis of paraffin-embedded human-lung, antibody was diluted at 1:100