



SNRPN Polyclonal Antibody

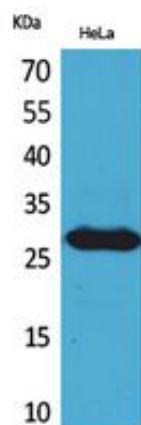
Catalog_no :	<u>AT5457</u>
Applications :	<u>WB,ELISA</u>
Reactivity :	<u>Human,Mouse,Rat</u>
Category :	<u>抗原抗体</u>
Size :	<u>100µg/50µg/20µg</u>
Gene_name :	<u>SNRPN</u>
Protein_name :	<u>Small nuclear ribonucleoprotein-associated protein N</u>
Humangene_id	<u>6638</u>
:	<u></u>
Humanswissprot	<u>P63162</u>
_no :	<u></u>
Mousegene_id :	<u>20646</u>
Mouseswissprot	<u>P63163</u>
_no :	<u></u>
Ratgene_id :	<u>81781</u>
Ratswissprot_no	<u>P63164</u>
:	<u></u>
Immunogen :	<u>The antiserum was produced against synthesized peptide derived from the Internal region of human SNRPN. AA range:21-70</u>
Specificity :	<u>SNRPN Polyclonal Antibody detects endogenous levels of SNRPN protein.</u>
Formulation :	<u>Liquid in PBS containing 50% glycerol, 0.5% BSA and 0.02% sodium azide.</u>
Source :	<u>Rabbit</u>
Dilution :	<u>Western Blot: 1/500 - 1/2000. ELISA: 1/20000. Not yet tested in other applications.</u>
Purification :	<u>The antibody was affinity-purified from rabbit antiserum by affinity-chromatography using epitope-specific immunogen.</u>
Concentration :	<u>1 mg/ml</u>
Storage_stability	<u>-20°C/1 year</u>
:	<u></u>
Msds :	<u>MSDS_Antibody.pdf</u>



Other_name : SNRPN; HCERN3; SMN; Small nuclear ribonucleoprotein-associated protein N; snRNP-N; Sm protein D; Sm-D; Sm protein N; Sm-N; SmN; Tissue-specific-splicing protein

Molecular Weight : 26KD

Product Images



Western Blot analysis of HeLa cells using SNRPN Polyclonal Antibody.. Secondary antibody was diluted at 1:20000 cells nucleus extracted by Minute TM Cytoplasmic and Nuclear Fractionation kit (SC-003, Inventbiotech, MN, USA).